

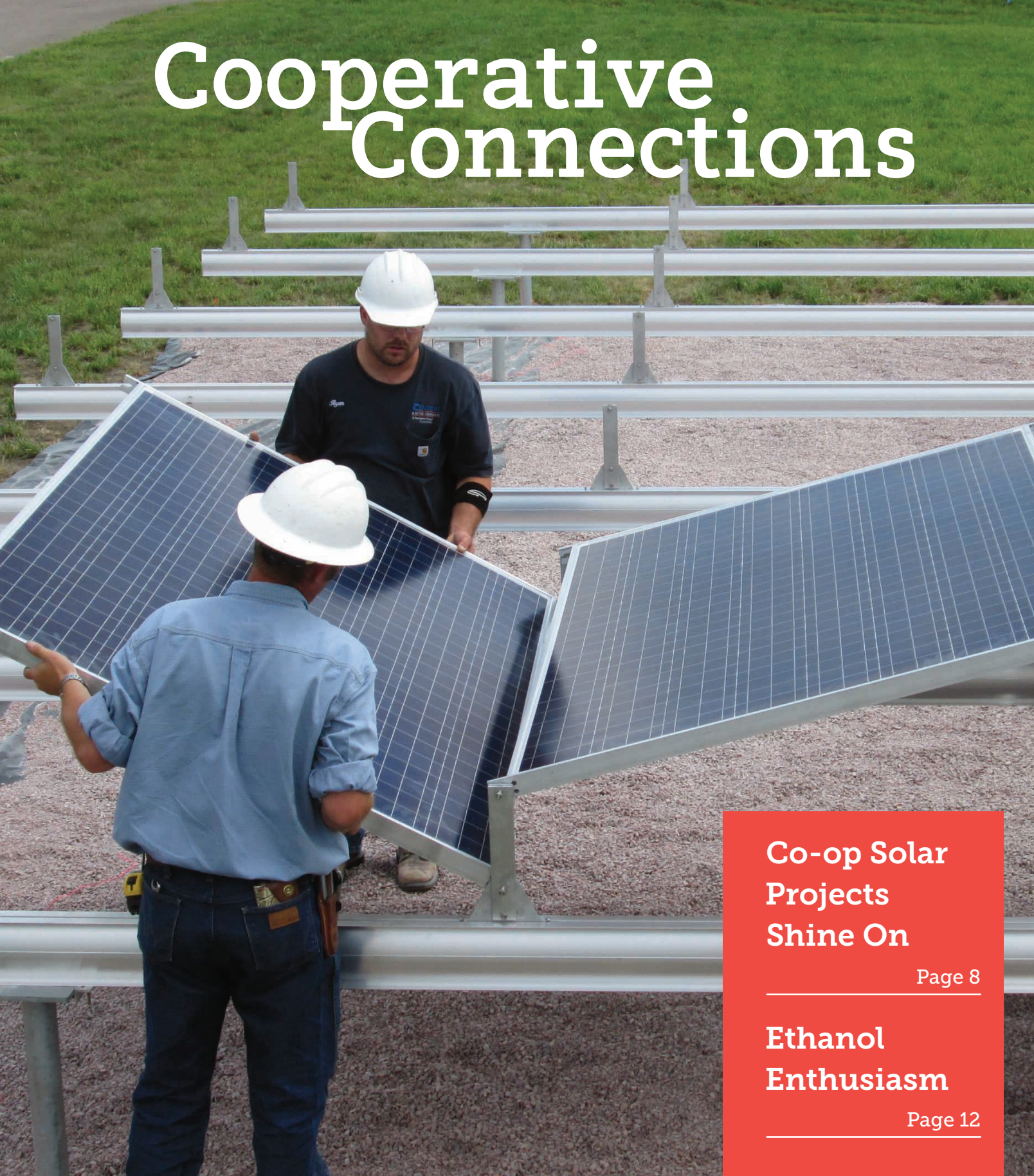


Renville-Sibley

A Touchstone Energy® Cooperative 

August 2019 Vol. 20 No. 4

Cooperative Connections



**Co-op Solar
Projects
Shine On**

Page 8

**Ethanol
Enthusiasm**

Page 12

Unplug to Be More Connected



DeeAnne Newville, CEO

dnewville@renville-sibley.coop
Phone: 320-826-2593 or
Toll Free 800-826-2593

**Take a moment
to slow down
and enjoy some
peaceful hours
away from
technology.**

“Almost everything will work again if you unplug it for a few minutes, including you.” Author Anne Lamott cleverly captures the benefits of unplugging in today’s device-driven, multi-tasking world. Keeping up with work, family and school activities or the latest trends on social media makes most of us feel compelled to constantly check our devices.

Summer is a great time to take a family vacation, but it’s also a good opportunity to unplug from our devices and enjoy the great outdoors with family and friends. Research has shown that we all need downtime after a busy day to recharge – even though we may resist it. Take a moment to slow down and enjoy some peaceful hours away from technology.

While you’re unplugging from your devices, take a look around your home to identify electronics that consume energy even when they are not in use (this is known as “vampire” energy loss). TVs, gaming consoles, phone chargers and computers are some of the biggest culprits.

If your summer plans include a staycation, take time to recharge your relationships and be more present with those you love. Stop by area parks, go for a walk or a bike ride and enjoy our beautiful surroundings with your family and friends.

Speaking of spending time outdoors, you can also enjoy energy savings by incorporating LED products and fixtures for outdoor use, such as pathway, step and porch lights. Many include features like automatic daylight shut-off and motion sensors. You can also find solar-powered lighting for outdoor spaces.

Save energy by keeping warm summer air outside where it belongs. Add caulk or weather stripping to seal air leaks around doors and windows. You can also employ a programmable thermostat to adjust the settings a few degrees higher when no one is home.

In our connected world, we have forgotten how to slow down. We multitask and text. We check email, then voicemail, then Facebook. Do yourself and your family a favor. Put down the device and smell the fresh air. 912600

While Renville-Sibley can’t help you recharge your relationships, we can help you save money and energy by connecting you with our energy-saving programs and services. When you do plug back in, we’re just a call or click away.

*Awareness doesn't spread as fast as an
electrical current, but a little goes a long way.
Remember to look up.*

RE-ENERGIZING FARM SAFETY

Renville-Sibley

Cooperative Connections

(USPS 019-074)

Board of Directors

Roger Manthei – Chair
Wayland Zaske – Vice Chair
Alan Neyers – Secretary/Treasurer
Gary Eekhoff
Matt Haubrich
Whitey Hinderman
Philip Nestande
Gary Peterson
Helen Ruebel

Renville-Sibley Employees

Gene Alex – Line Superintendent
Brian Athmann – Journeyman Lineman
Shawn Beckler – Crew Chief
Mike Benson – Journeyman Lineman
Brad Braulick – Crew Chief
Nick Bruns – Systems Coordinator
Anthony Carruth – Journeyman Lineman
Amy Ervin – Consumer Accounts Representative
Brayden Fischer – Journeyman Lineman
Cindy Mertens – Administrative Services Manager
DeeAnne Newville – CEO
Brandon Ochs – Journeyman Lineman
Clint Olson – Journeyman Lineman
Kathy Ridl – Office Assistant
Lenae Wordes – Communications Manager

RENVILLE-SIBLEY COOPERATIVE CONNECTIONS is published monthly by Renville-Sibley Co-op Power Association, 103 Oak Street, Danube, MN, 56230 for its members. Electric cooperative members devote 50 cents from their monthly electric payments for a subscription. Non-member subscriptions are available for \$6 annually. Periodicals Postage Paid at Danube Post Office, Danube, MN 56230 and at additional mailing offices.

POSTMASTER: Send address changes to: Renville-Sibley Cooperative Connections, PO Box 68, Danube, MN 56230; Telephone (320) 826-2593; Toll Free 1-800-826-2593; Fax (320) 826-2679;

Web site: www.renville-sibley.coop

This institution is an equal opportunity provider and employer.



Stray Voltage Can Cause Livestock Problems

Stray voltage can cause serious problems in certain confinement livestock systems. Dairymen and hog producers can lose production from their livestock and experience health problems due to small electric voltages. These voltages are known by several names, including tingle voltage, neutral-to-earth voltage, neutral-to-ground voltage and nuisance voltage. They all refer to very low voltage between two animal contact points. The cause of the voltage can be varied and complex. It may be caused by poor load balance, faulty wiring or equipment, improper grounding or a host of other electrical problems.

One common problem is that the farm operations grow in size, but the electrical service isn't upgraded to grow along with it. Also, electrical systems become obsolete and deteriorate due to improper maintenance.

It must be understood, however, that many factors other than stray voltage may cause behavior, health and production problems. A careful analysis of all possible causes is necessary if proper corrective procedures are to be found.

A special section of the National Electric Code deals with the special requirements for wiring all livestock buildings. If these are strictly followed and buildings are "up to code," the potential for stray voltage problems is greatly reduced. Many older barns have been converted from one use to another and do not meet code requirements. If you are building new livestock facilities, be sure all work is done in accordance with Article 547 of the National Electric Code.

If stray voltage is suspected on your farm, contact Renville-Sibley Cooperative Power Association. An investigation will be made to determine if a problem is present. Your electrician is also requested to be present so any problems can be noted and corrected. In dairy operations, consulting your milking equipment dealer and local veterinarian is also recommended. They can determine if equipment problems or health problems that may or may not be related to stray voltage are present.

Electrical Safety During Disasters

Electricity drives the modern world and we often take it for granted. And if a natural disaster occurs, there's a few things to remember to stay electrically safe during the storm.

- Before the storm hits, make sure to charge all phones and other communication devices. Then, unplug all electronics and move them as high as possible to avoid water damage from flooding.
- Turn off the main power breaker feeding the home to prevent any surges to the wiring and equipment.
- After the storm blows through, and you begin to evaluate the aftermath, it's important to avoid flooded areas as they may be electrified.
- Do not use any electrical equipment or electronics if they've been submerged.
- If flooding has occurred, have the electrical system inspected by a qualified electrical inspector.
- If you're using a generator, ensure a qualified electrician installed it and make sure to use a listed and approved transfer switch and GFCI protection.
- It's a good idea to protect your home with carbon monoxide detectors.
- When venturing outside, be very alert of your surroundings. If you encounter a fallen power line, stay at least 35 feet away. Avoid touching any objects the line may be laying on such as a fence, a car, or a light pole as the object could be energized.
- If others are around, alert them to stay away and call 911.

While storms can be devastating to a community, the aftermath can be challenging. However, could be an opportunity to renovate and upgrade your main power source with renewable energy such as solar.

Floodwaters and heavy winds aren't the only hazards during a storm. That's why it's important to treat electricity with extreme caution.

Source: esfi.org

Come visit your Touchstone Energy® Cooperatives at one of these events!

MINNESOTA

FARMFEST®

Aug. 6-7
Gilfillan Estate
28269 MN-67
Morgan, MN

Aug. 20-22

2300 E Spruce St.
Mitchell, SD

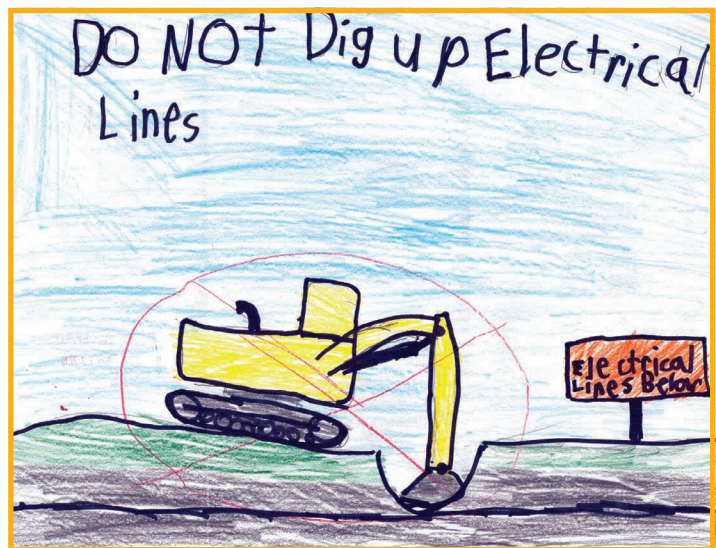
DAKOTAFEST®



Aug. 29-Sept. 2
1060 Third St. SW, Huron, SD

We'll see you there!

KIDS CORNER SAFETY POSTER



"Do not dig up electrical lines."

Luke Kangas, 9 years old

Luke is the son of Andrew and Gail Kangas, Lake Norden, S.D.
They are members of H-D Electric Cooperative, Clear Lake, S.D.

Kids, send your drawing with an electrical safety tip to your local electric cooperative (address found on Page 3). If your poster is published, you'll receive a prize. All entries must include your name, age, mailing address and the names of your parents. Colored drawings are encouraged.

Very Vegetarian

Southwest Brunch Casserole

2 T. oil	1 cup shredded Monterey Jack cheese
1 medium onion, chopped	6 eggs
1 red bell pepper, chopped	2 cups milk
1 (8 oz.) loaf Italian bread, cut into 1-inch cubes (5 cups)	1 tsp. chili powder
1 (15 oz.) can black beans, drained and rinsed	2 tsp. ground oregano
2 cups shredded Cheddar cheese	1 tsp. ground cumin
	1 tsp. salt

Heat oil in large skillet on medium heat. Add onion and bell pepper; cook and stir 3 minutes or until softened. Spread 1/2 of the bread cubes in 13x9-inch baking dish. Layer with 1/2 each of the onion mixture, beans, Cheddar cheese and Monterey Jack cheese. Repeat layers. Beat eggs in medium bowl until foamy. Add milk, chili powder, oregano, cumin and salt; beat until well blended. Pour evenly over top. Press bread cubes lightly into egg mixture until completely covered. Let stand 10 minutes. Bake at 350°F. for 40 to 50 minutes or until center is set and top is golden brown. Makes 12 servings.

Nutritional Information Per Serving: Calories 275, Total Fat 15g, Sodium 633mg, Cholesterol 121mg, Carbohydrates 21g, Protein 14g, Fiber 3g

Pictured, Cooperative Connections

Black Bean Burgers

3 (15 oz.) can black beans, rinsed and drained	2 T. seeded, minced jalapeno pepper (or pepper of choice)
1-3/4 cups diced onion	3/4 tsp. salt
1-1/2 cups uncooked regular oats	2 large eggs, lightly beaten
3/4 cup chopped fresh cilantro	1/4 cup all-purpose flour
	1/4 cup cornmeal

In a large bowl, coarsely mash beans with a fork. Add next 6 ingredients; stir well. Shape into 8 patties. Combine flour and cornmeal in a pie plate; stir well. Dredge patties in mixture. Cook patties in a small amount of oil over medium-high heat until lightly browned – about 5 minutes on each side.

Darcy Bracken, Hermosa, SD

Baked Pineapple

1 cup sugar	2 cups grated Cheddar cheese
6 T. flour	1 stick butter, melted
5 T. pineapple juice	1/2 cup cornflake crumbs
2 cans pineapple tidbits, drain, reserving juice	

Mix together sugar, flour and pineapple juice. Add pineapple and cheese. Place in a greased casserole dish. Combine butter and cornflake crumbs; sprinkle over all. Bake at 350°F. until brown and bubbly. Serve hot or cold.

Verna Nelson, Wakonda, SD

Bean 'n' Butter Bread

1 (15 oz.) can kidney beans	1 egg, beaten
1/3 vegetable oil	1 cup hot water
1/3 cup peanut butter	3 pkgs. yeast
1/3 cup molasses	4 cups all-purpose flour
3 T. sugar	1 cup whole wheat flour
1 tsp. salt	Egg white

Place first 7 ingredients in blender; blend until smooth. Pour into large mixing bowl. Stir in hot water. Combine yeast and 4 cups flour. Add to bean mixture, mixing well. Add wheat flour. Work in to form a stiff dough. Let rise 1-1/2 hours. Punch down and let rise 15 minutes. Shape into 2 loaves, placing on a greased cookie sheet. Mix egg white with 2 T. water for egg wash. Brush on loaves. Make 1/8-inch slash every 2-1/2 inches apart. Bake at 350°F. for 55 minutes. You may use crunchy peanut butter or add sunflower seeds.

Anne Burleson, Lead, SD

Please send your favorite garden produce, pasta and slow cooker recipes to your local electric cooperative (address found on Page 3).

Each recipe printed will be entered into a drawing for a prize in December 2019. All entries must include your name, mailing address, telephone number and cooperative name.

Round Up® Board Named

By the time you get this newsletter, Renville-Sibley would have processed two billing cycles with the Operation Round Up amount applied to the bill. Thank you for supporting the Operation Round Up program. Now that there are funds coming into the account, Renville-Sibley's board of directors approved members to serve on the board of trustees to manage the donation requests from this fund. Elected at the June board meeting to serve on the Operation Round Up board are the following:



- **Louise Kiecker**
representing District 1
- **Ty Erickson**
representing District 2
- **Butch Buschette**
representing District 3

These members will review applications submitted by organizations requesting money from the fund. The trustee board will meet at least annually and may meet quarter-annually if deemed necessary. More information about the donation application process will be in next month's newsletter. Until then, if you participate in a nonprofit organization or a community group and need some financial help with an upcoming project, keep us in mind.

Head North to Alaska



Lenae Wordes

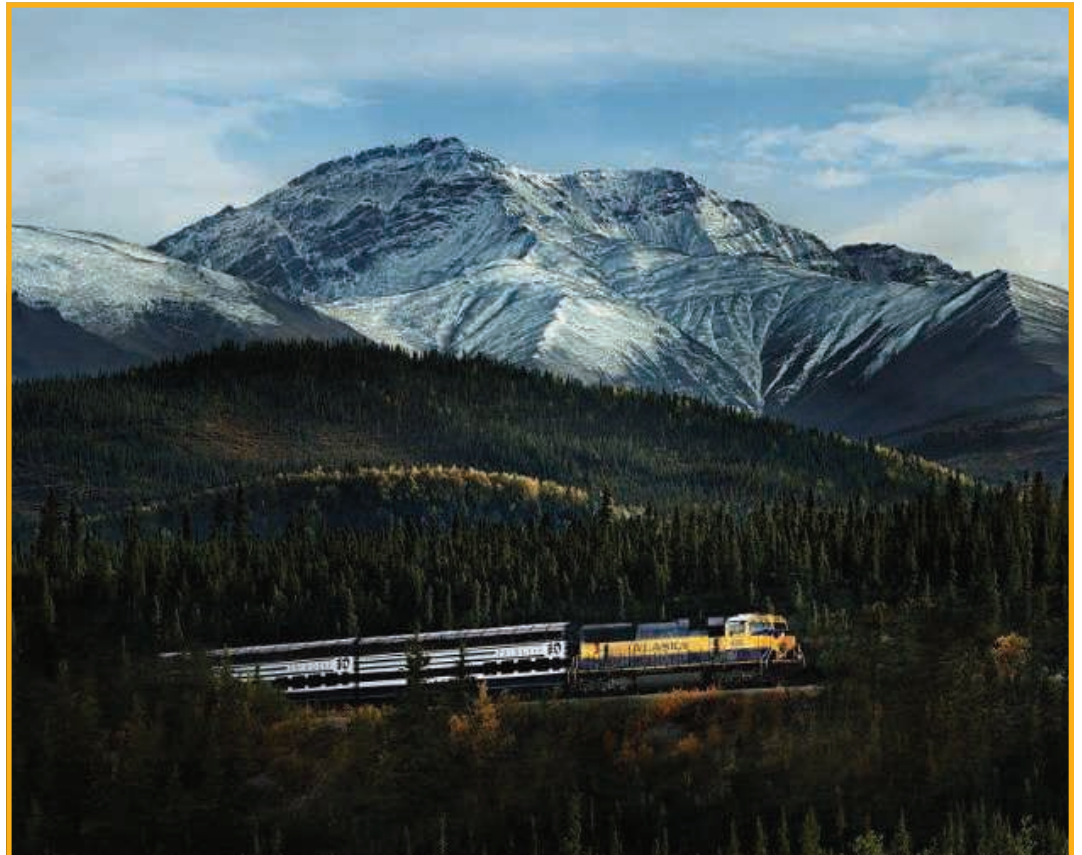
lwordes@renville-sibley.coop

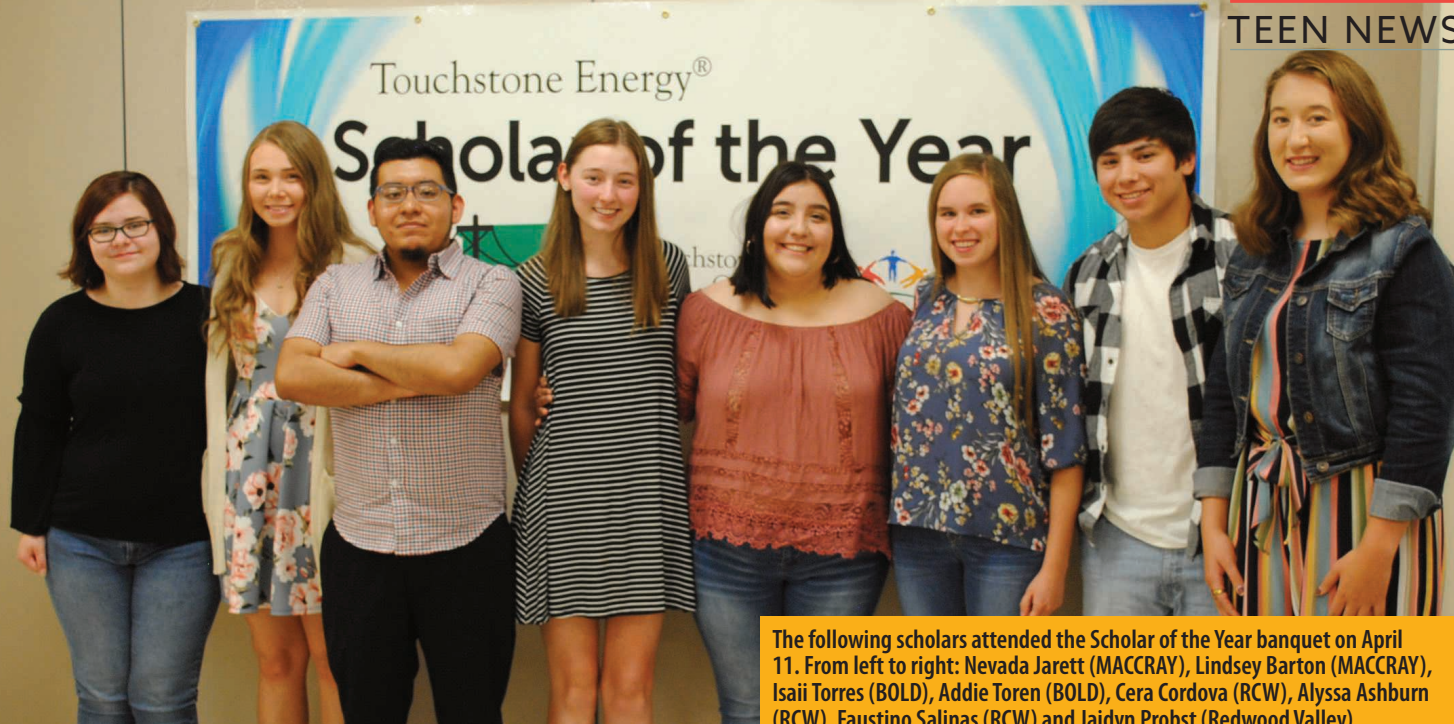
One year from now, you could be soaking in the sights of the beautiful state of Alaska with your neighbors, friends and family. Some of these great sights include a gold dredge, stunning mountains, Hubbard Glacier and if we are lucky, a bear or two (from a distance!). You can relax and enjoy the views from a motor coach, train and cruise ship as we travel through Alaska. Ahh, what a trip that will be!

I have been asked if friends or family who are not members of our cooperative would be able to join in on this great excursion. The answer is, maybe. A sign-up meeting is scheduled for Tuesday, Sept. 17, in Danube. At this meeting, Renville-Sibley members who know they want to take the trip can sign-up and pay the deposit to secure their spot. The trip will be left open until Oct. 18 for any other members to register. If there are still seats available after that date, the trip will be opened up to friends and family of our members. I will

leave this open for non-members until Nov 15. The travel agency will fill any vacant seats after Nov. 15. (Please note, these dates may be subject to change. Continue to watch the newsletter for more information.) If you are interested in the trip and would like to take someone with you who is not a member, please share information with them about the trip so they can be prepared to register should the trip be opened up to non-members.

I have fliers with more information on the trip and would be happy to mail them out to anyone interested in going to Alaska. As always, you may give me a call at 800-826-2593 if you have any questions.





The following scholars attended the Scholar of the Year banquet on April 11. From left to right: Nevada Jarett (MACCRA), Lindsey Barton (MACCRA), Isaii Torres (BOLD), Addie Toren (BOLD), Cera Cordova (RCW), Alyssa Ashburn (RCW), Faustino Salinas (RCW) and Jaidyn Probst (Redwood Valley).

Renville-Sibley Holds Scholar of the Year Banquet

By Lenae Wordes

lwordes@renville-sibley.coop

The fourth annual Renville-Sibley Co-op Power Touchstone Energy® Scholar of the Year banquet was held on Tuesday, June 11, at the Danube Community Center. The event honored the eight high school seniors who were selected as the Scholar of the Month throughout the 2018-19 school year.

As a Touchstone Energy Cooperative, Renville-Sibley Co-op Power is founded on the four pillars of Integrity, Accountability, Innovation and Commitment to Community. Based on these principles, Renville-Sibley Co-op Power sponsors the Scholar of the Month program to recognize those high school students who also share these same values.

Each month, teachers from the local school districts nominate a high school senior from their school who demonstrates outstanding academic, school and community achievements. By random drawing, one name is selected each month from those names submitted. The selected student is awarded a \$100 donation to be given to the student's school on their behalf. The student chooses which program the donation should be given to at their school (music, sports, arts, etc.). The monthly winners were featured on their local radio station (KLGR, KOLV or KNUJ), an ad placed in their local newspaper as well as Renville-Sibley's newsletter, *Renville-Sibley Co-op Power Cooperative Connections*.

Schools invited to participate in the program include Renville County West, MACCRA, Central Minnesota Christian School,



Cera Cordova, winner of a \$1,000 scholarship, is pictured with Renville-Sibley's Communication Manager Lenae Wordes.

BOLD, Redwood Valley, Cedar Mountain and GFW.

All Scholars of the Month, their family and the teacher who made the nomination were invited to attend the Scholar of the Year banquet. Cera Cordova was selected, by random drawing, as the Scholar of the Year and the winner of a \$1,000 scholarship from Renville-Sibley.

Jeremy Hinderks was the guest speaker at the banquet. Hinderks is a graduate of BDRSH (now RCW), Concordia College in Moorhead and Northwestern Health Sciences University. He owns and operates Hinderks Chiropractic, PA with locations in Renville, Granite Falls and Willmar.

Renville-Sibley will continue this program in the 2019-2020 school year.



Central Electric's Prairie Solar project can be seen in front of the co-op's office along Betts Road west of Mitchell, S.D. On the Cover: Central Electric employees install the Prairie Solar project in 2015.

BRIGHT LESSONS

Co-op Solar Projects Help Educate, Inform

Brenda Kleinjan

editor@sdrea.coop

Co-op members across the area are able to get firsthand information about solar energy straight from their electric cooperatives.

"There were a number of vendors in the region promoting various technologies. We wanted to provide accurate, real-time information to our members. Our role as a trusted energy expert made us want to educate ourselves on behalf of the members," said Brian Jeremiason, manager of marketing and external relations at Lyon-Lincoln Electric Cooperative in Tyler, Minn.

So, in late December 2015, Lyon-Lincoln Electric installed its 8.4 kW AC solar system. The small project was designed to match a typical residential load for the southwestern Minnesota cooperative. The project consists of 28, 400 watt panels, each measuring 52.5 inches by 78 inches. The entire array measures 45.5 feet by 28 feet.

"It's provided information about expected production versus actual production," said Jeremiason, who noted that actual production for the system's first three years has been "about 80 percent of what our vendor projected."

Aside from a few inverters that failed within the system's first two years, Jeremiason said the system has been mostly maintenance free.

An important lesson learned for the co-op was that companies in the industry tend to go out of business overnight.

"Overall, while the financial payback is long, it's been a benefit to the cooperative members as an educational tool," said Jeremiason.

Bon Homme Yankton Electric Association installed its solar project in 2018 behind the co-op's office in Tabor, S.D.

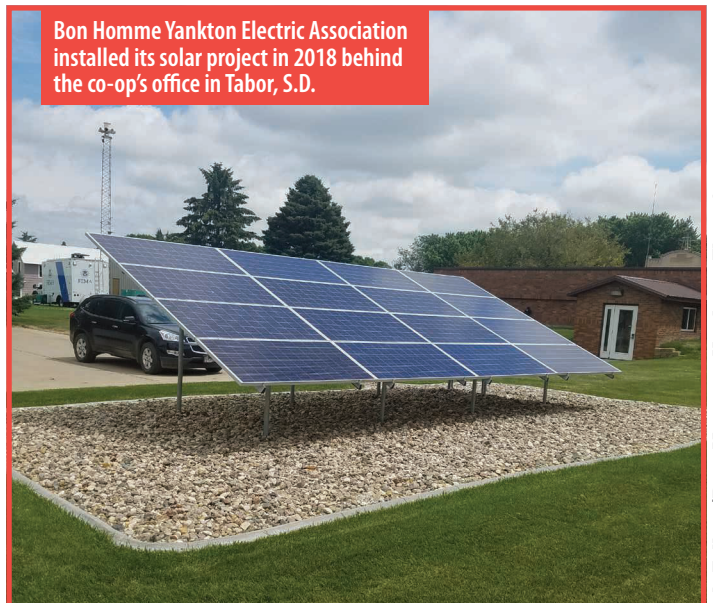


Photo by Bob Felber/Bon Homme-Yankton Electric

Central Electric Cooperative in Mitchell, S.D., also installed a solar project in 2015 to learn firsthand how to plan and construct such a project and also how well it would perform in the area around Mitchell.

Similar to Lyon-Lincoln's experience, the vendor the co-op used went out of business shortly after installation.

Fortunately, there has been little maintenance or upkeep needed for the system.

“The solar industry is still in its infancy and experiencing growth and change,” said Central Electric General Manager Ken Schlimgen. “As a result, the names in the industry come and go and the solar equipment you see today will be obsolete in a few years.”

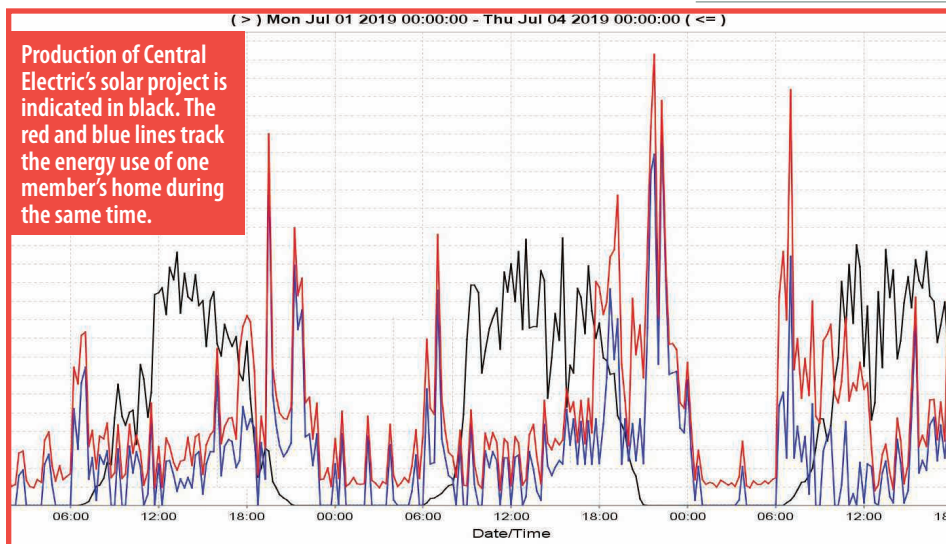
One lesson the co-op learned was to double check with building requirements in your county. The ground-mounted system they installed required a Davison County building permit.

A second lesson learned was the impact of cloud cover on the system.

“Any type of cloud cover reduces the kilowatt hour production of the system,” said Schlimgen.

“I believe the project has helped our employees better understand the equipment used in solar projects. We can also compare the production of our solar project and overlay that information onto a members actual consumption. This allows the member to better understand when a solar system would be offsetting their purchases and when they would still need to make purchases of electricity. Our solar project also helps to provide sizing information to members who are asking questions about installing solar,” said Schlimgen.

Central Electric’s Manager of Marketing and Member Services Patrick Soukup noted, “One of the biggest lessons that I had to learn is about time of use versus time of production. Once we overlaid the graphs together, it’s apparent how



solar works in our typical day and how important sizing the system to your needs would be.”

While the co-op invested more than \$32,000 in the system, the returns on the investment from an educational perspective have been worthwhile.

“The investment we had and the data collected is just priceless,” Soukup said.

Sioux Valley Energy in Colman, S.D., has the largest of the solar demonstration projects installed at its Brandon, S.D., service center. The cooperative constructed its 24.8-kilowatt project in April 2015 and had it operational by May 1 of that year. The project’s 80 panels were faced south, southwest and west, which allowed the co-op to examine how the orientations affected production.

“The output is very close to what was

planned. The difference in the output from facing the panels three different directions has allowed us to learn about which orientation will better match up with a member’s usage patterns. The project was fairly easy to assemble,” said Ted Smith, Sioux Valley Energy’s director of engineering and operations.

The entire array was installed for about \$3 per watt. In the project’s first four years, it produced 126,201 kilowatt hours, with a projected payback of 16 to 20 years. (The estimated life of the array is between 30 and 50 years.)

The new kid on the co-op solar block is Bon Homme Yankton Electric Association in Tabor, S.D, which installed its 5kw system in July 2018. The co-op publishes the project’s output each month in their magazine.



Solar panels at Lyon-Lincoln Electric Cooperative in Tyler, Minn., have helped the co-op answer members’ questions about the resource.

June Board Meeting Highlights

The June board meeting was held on Monday, June 24, at 8 a.m. All board members were present except Alan Neyers. Others present were CEO DeeAnne Newville, Gene Alex, Lenae Wordes and one visiting Renville-Sibley member.

The board reviewed and approved the following items:

- Minutes of the May board meeting
- Operating and disbursement reports for the month of May
- Capital credits to an estate
- Safety report for June
- Operation Round Up® board of trustees
- Schedule B – Rates
- Allocation of 2018 margin
- East River Electric annual meeting voting delegates
- NRECA regional meeting voting delegates

The board reviewed:

- Total new members for the month of May
- Reports from staff members as to the activities in their department. Items in the reports include:
 - High level Statement of Operations review – YTD through May (unaudited)
 - Organization activities
 - East River update
 - Basin Electric update
 - NRECA Update
 - MREA Update
 - Line crew work in progress, equipment update and outage update
 - Accounts receivable
 - Alaska tour
 - Scholar of the Year banquet
 - Farmfest
 - Family-a-Fair night

Please contact the Renville-Sibley office if you would like more information regarding the board meeting.

FREE Want Ad Service

Members can submit ads for the following categories: Giveaway, For Sale, For Rent and Wanted. Ads should be or are limited to no more than 15 words and must be received by the first of the month to be included in the following month's newsletter. Renville-Sibley reserves the right to edit content or exclude ads due to space restrictions. Ads will be run one time only unless resubmitted. Please complete the following information and mail to the Renville-Sibley Cooperative Power, PO Box 68, Danube, MN 56230.

Name: _____

Address: _____

Phone number: _____

Ad to be placed (limit of 15 words per ad)

_____	_____	_____	_____	_____
_____	_____	_____	_____	_____
_____	_____	_____	_____	_____

Type of ad: ☐ Giveaway ☐ For Sale ☐ For Rent ☐ Wanted

Notice:

The July board meeting will be held on Monday, July 22, at 8 a.m.
The August board meeting will be held on Monday, Aug. 26, at 8 a.m.

Where's the Number?

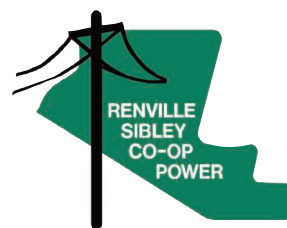
Last month, Brian Zieske did not find his member number in the newsletter. The credit will continue to grow to a value of \$20. Another number has been hidden in this newsletter. If you find your number and call the office by Aug. 5, you will receive this credit on your electric statement. Good luck in your search!



Mission Statement

Renville-Sibley Cooperative Power Association will provide efficient, reliable

electric energy and services to enhance the quality of rural living.



For Sale

For Sale: Davenport set – \$125, microwave – \$75, Montgomery Ward electric sewing machine – \$60, riding lawn mower – \$125, seven-drawer writing desk – \$30

Elsie Heutinck, Olivia, MN
 320-523-1705 (call after 7 p.m.)

Adding a new building to your farm?



Plan ahead for safety!

*We care about the safety of you, your family and farm workers.
That's why we urge you to call us before you break ground
on a new grain bin, barn, or other building.*

*Building a structure too close to overhead power lines can create
an electric shock danger during and after construction.*

*Call us first. We'll work with you to ensure safe
power line clearances for your addition.*



320-826-2593 • 800-826-2593

Ethanol in South Dakota

Courtney Deinert

cdeinert@centralec.coop

Ethanol production continues to increase with a new large facility added every other year or so.

The ethanol industry in South Dakota began a little more than 30 years ago when Jeff Broin and his family purchased a foreclosed ethanol plant in 1988 near Scotland, S.D.

The Broin family had been distilling ethanol as a way to make a little extra money on the farm after the 1970s, when corn production cost more than producers could sell it for. By purchasing the plant, the family had an opportunity to expand their process. This initial plant near Scotland became the pilot for POET Biorefining and is currently one of 15 operating plants in the state.

Last year, South Dakota ranked 6th nationally in ethanol production capacity and provided 7 percent of the nation's total ethanol production.

Rural South Dakotans know that in addition to providing an alternative fuel source, ethanol provides an additional market for corn producers. From 2002 to 2012, gross corn use for ethanol production increased from less than 10 percent to more than 40 percent (and the production process does kick back distiller grain to alleviate the need for corn and soybean meal for livestock). The same study claims for every 10 percent increase in ethanol production (or 1 billion gallons), average



About one-third, or 17 pounds, of every bushel of corn sent to an ethanol plant is used as livestock feed.

long-run corn prices increase by 2 percent to 3 percent (based on production from 2008-2013).

Impact on Electric Cooperatives

Ethanol has also impacted local electric cooperatives. East River Electric Power Cooperative, a generation and transmission cooperative headquartered in Madison, S.D., includes a number of ethanol plants located within its system, and more than 11 percent of East River kilowatt hour (kWh) sales go to large ethanol production plants.

"Ethanol production continues to increase – with a new large facility added every other year or so over the last 15 years," says Michael Volker, manager of rates and treasury at East



Blender pumps at South Dakota gas stations offer drivers a variety of choices of ethanol blends.

Ethanol Plants in South Dakota

Company	City	Production Capacity MGY (million gallons/year)	Operating Production	Under Expansion MGY (million gallons/year)
ABE South Dakota LLC	Aberdeen	53	53	
ABE South Dakota LLC	Huron	32	32	
Dakota Ethanol LLC	Wentworth	48	48	
Glacial Lakes Energy LLC	Mina	100	100	
Glacial Lakes Energy LLC	Watertown	120	120	
NuGen Energy LLC	Marion	130	130	
POET Biorefining – Big Stone LLC	Big Stone City	79	79	
POET Biorefining – Chancellor LLC	Chancellor	110	110	
POET Biorefining – Groton LLC	Groton	53	53	
POET Biorefining – Hudson LLC	Hudson	56	56	
POET Biorefining – Mitchell LLC	Mitchell	68	68	
POET Research Center	Scotland	11	11	
Red River Energy LLC	Rosholt	25	25	
Redfield Energy LLC	Redfield	60	60	
Ringneck Energy & Feed LLC	Onida	-	-	80
Valero Renewable Fuels Co. LLC	Aurora	135	135	

River. Currently, there are new plants being constructed near Onida and Yankton, S.D.

The plants specifically served by East River and its member cooperatives can produce more than 500 million gallons of ethanol per year and consume approximately 200 million bushels of locally grown corn.

Flex Fuels

South Dakota is a national leader in its use of ethanol in the state vehicle fleet. In 2017, South Dakota ranked third nationally in the gallons of E85 consumed by state fleet (behind No. 1 Texas and No. 2 Maryland).

Of the state fleet, approximately 65 percent use a blend of ethanol, from E15 to E85. In early 2019, Gov. Kristi Noem announced her intent to transition the state fleet to E30.

For the public, there are 87 stations in South Dakota that offer E85 (ethanol-gasoline blends containing 51 percent to 83 percent ethanol). Of the stations, 41 include some mid-level blend such as E15 or E30.

While E85 can only be used in flex fuel vehicles (FFVs), the EPA approved the use of E15 (gasoline blended with up to 15 percent ethanol) in model year 2001 and newer cars, light-duty trucks, medium-duty passenger vehicles (SUVs) and all FFVs. This includes approximately nine out of 10 of the vehicles on the road today.

On May 31, 2019, the EPA signed into action the rule allowing E15 to be sold

year-round, including the summer months and peak driving season, rather than eight months out of the year.

“For the ethanol industry and farmers, this means greater market access – more ethanol demand over the long term as additional retailers begin offering E15,” Brian Jennings, CEO of the American Coalition for Ethanol, responded after the EPA announcement.

Consumers will also see E15 marketed as “Unleaded 88” at the gas pumps.

Byproducts

According to ACE, about one third, or 17 pounds, of every bushel of corn sent to an ethanol plant is used as livestock feed. The kernels of corn are made of starch, protein and fiber. The protein stays in the food supply in the form of a high-quality feed called DDGS (Dry Distillers Grains with Solubles.) The concentrated corn protein is a high-value feed product for cattle, hogs and poultry. The ethanol production process uses only the corn’s starch (carbohydrates.)

For the ethanol industry and farmers, this means greater market access – more ethanol demand over the long term as additional retailers begin offering E15.



Outage Report

affecting 10 members or more

Date: 6-7-19
Time off: 8:04 a.m.
Time on: 8:22 a.m.
Substation: Troy
Cause: Farm equipment hit line

Date: 6-7-19
Time off: 8:04 a.m.
Time on: 9:02 a.m.
Substation: Troy
Cause: Farm equipment hit line

Date: 6-12-19
Time off: 10:45 a.m.
Time on: 12:03 p.m.
Substation: Emmet
Cause: Excavating contractor hit line

Date: 6-23-19
Time off: 6:09 p.m.
Time on: 8:06 p.m.
Substation: Henryville
Cause: Tree in the line

Date: 6-27-19
Time off: 8:34 a.m.
Time on: 10:16 a.m.
Substation: Cairo
Cause: Lightning

Date: 6-27-19
Time off: 8:49 a.m.
Time on: 11:10 a.m.
Substation: Cairo
Cause: Lightning

Please contact Renville-Sibley's office for more details about these power outages.

THE ONE CALL PROCESS

When you have a project that requires digging, your first step is to contact Gopher State One Call. You can do this by using GSOC's Homeowner Online Locate Request system or by calling the One Call Center.

(651)454-0002 -or- (800)252-1166
www.gsocsubmit.org

BE PREPARED

When you contact GSOC with a locate request, a series of questions will be asked.

- What is your name, address and phone number?
- What type of work will you be doing? (i.e. planting a tree, installation of fence)
- What is the dig location's address, city, county and nearest intersecting street?
- At the dig location, where will you be digging? (i.e. east side of house, within 5 ft radius of white stake.)
- When will you be digging? (i.e. 3 days, next week)

GET YOUR UNDERGROUND FACILITIES MARKED

Once you have submitted your dig information it is created as a "ticket" which is sent to any utilities that may have underground facilities in the area of excavation. Those utilities will send a locator to the site to either paint or flag the area in question.

CHECK FOR POSITIVE RESPONSE

A good practice before digging is to check Gopher State One Call's Positive Response site respond to determine if each utility company

has visited your dig site or responded to your locate request.

www.gsocsearch.org

DIG!

In accordance with Minnesota, you must wait 48 hours (excluding weekends and holidays) after you've submitted your dig information to begin your digging project.

THINGS TO KEEP IN MIND!

OUTLINE THE DIG AREA

Before you contact GSOC, you must outline your dig area with white markings. This helps the locator know exactly where you will be digging. Some good examples of white marking tools include white paint, flags, laths or stakes.

WAIT FOR LOCATES

After contacting GSOC, you must wait. Utilities have 48 hours (excluding weekends and holidays) to locate their facilities. That means if you plan to dig on Saturday, call on Wednesday.



811 Know what's below.
Call before you dig.

(651)454-0002 -or- (800)252-1166



Energy Efficiency Tip of the Month

Routinely replace or clean your air conditioner's filter. Replacing a dirty, clogged filter can reduce your air conditioner's energy consumption by 5 percent to 15 percent.
Source: energy.gov



Thank You...

Thank you so much for your donation to the Morton 4th of July celebration. We very much appreciate your generous donation.

Morton
4th of July
Committee
- Pam & Kara



Comparative Report

	Current YTD through May 31, 2019	1 Year Ago YTD through May 31, 2018	10 Years Ago YTD through May 31, 2009
Average Number of Consumers	1,882	1,882	1,951
kWhs Purchased	69,469,600	87,835,048	74,072,570
Cost of Purchased Power	\$4,062,312.98	\$5,283,746.83	\$2,784,883.88

**Visit us, along with other
Touchstone Energy Cooperatives, at Farmfest 2019
and enter for a chance to win a grand prize!**

FARMFEST 2019 • AUGUST 6 - 8 • REDWOOD FALLS, MN

Bring this coupon to Booth #2301

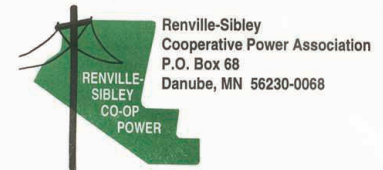
NAME _____

ADDRESS _____

PHONE # _____

EMAIL ADDRESS _____

You must be a member one of the participating electric cooperatives to be eligible to win.



Bring this slip to register for prizes at the
Touchstone Energy Cooperatives booth.

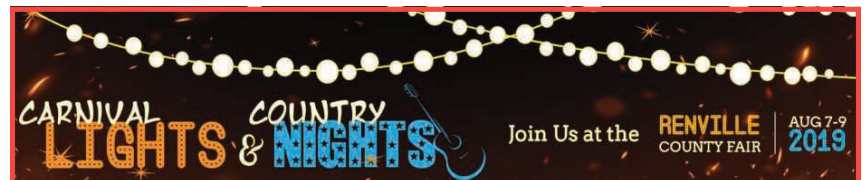
AUGUST MEMBER EVENTS

Be Sure to Visit Us at the Touchstone Energy®
Cooperatives Booth at Minnesota's Farmfest

Lenae Wordes

lwordes@renville-sibley.coop

Before you know it, August will be here and that brings with it the annual Farmfest and Family-a-Fair events. Be sure to mark your calendar so you don't miss these two great activities.



Farmfest

Farmfest is a great outdoor event for farmers and anyone interested in agriculture. This event will be held on Aug. 6-8 at the beautiful Gilfillan Estate near Morgan, Minn. Renville-Sibley, along with other electric cooperatives in southern Minnesota, have joined together in this booth. The theme this year will be "Energy Education." There will be information on electrical safety, usage information, heat pumps and renewable energy to name a few.

On Wednesday, Aug. 7, from 7 a.m. to 11 a.m., there will be three electric vehicles (Bolt, Tesla and Leaf) available to view outside of South Gate 2. If you are interested in learning more about these vehicles, be sure to stop by for a visit.

We are located at Booth 2301 in the large ag tent. When you come, remember to bring the above coupon with you. With this coupon you will be entered into a drawing for a chance to win one of three yard tools. You must bring the coupon to be entered into the drawing. No coupons will be available at the booth if you forget to bring the coupon. Everyone will have a chance to play a game to win a prize. Stop by to see what you might win.

Family-a-Fair Night

Renville-Sibley is pleased to continue our Family-a-Fair Night tradition of inviting members to attend the Renville County Fair compliments of the cooperative. This great event brings families and neighbors together to enjoy all the fun fair activities.

Cooperative members (up to four family members) are invited to attend the Renville County Fair **FREE on THURSDAY, AUG. 8.** Members will receive a postcard in the mail the week of July 22. This postcard entitles up to four family members FREE entrance into the fair. Postcards should be brought to the West Gate of the Renville County Fair on Thursday, Aug. 8, between the hours of 3 and 7 p.m. Renville-Sibley representatives will be located just outside the west fence to assist you. The postcard will be used to enter members into a drawing for an energy gift certificate. Children will have the opportunity to submit their name for a prize drawing as well.

If you have any questions about these two great events, be sure to give us a call at 800-826-2593 or 826-2593.

July 23-27

Days of '76 Rodeo and Parades, Deadwood, SD, 605-578-1876

July 24-27

Senior Games, Rapid City, SD, Contact Kristi Lintz at 605-394-4268

July 26-27

Rock-N-Rumble Motorcycle Rally, Yankton, SD, 605-665-3636

July 26-27

Senior Games, Brookings, SD, Contact Traci Saugstad at 605-692-4492

July 26-28

Catfish Derby Days, Franklin, MN, 507-557-2259
www.franklinmn.us

July 26-28

Annual Bruce Honey Days, Bruce, SD, 605-627-5671

July 27

Folk Off & Rib Challenge, Renner, SD, 605-543-5071

July 27

Miner Music Festival, Hill City, SD, 605-574-2886

July 27

South Dakota Chislic Festival, Freeman, SD, 605-925-4444

August 2-4

Sioux River Folk Festival, Canton, SD, 605-261-7414

August 2-4

Musicfest 2019, Pla-Mor Ballroom, Glencoe, MN, 320-826-2531

August 2-10

Sioux Empire Fair, Sioux Falls, SD, 605-367-7178



August 16-18: Black Hills Threshing Bee, Sturgis SD, 605-490-2024

Photo courtesy: travelsouthdakota.com

August 2-11

Sturgis Motorcycle Rally, Sturgis, SD, 605-720-0800

August 3

Foothills Classic Car & Tractor Show, Wessington Springs, SD, 605-539-1805

August 3-4

Senior Games, Yankton, SD, Contact Brittany Orr at 605-668-5234

August 6-8

Farmfest, 28269 MN-67, Morgan, MN, 800-827-8007

August 8

Family-a-Fair night at Renville County Fair, Fairgrounds, Bird Island, MN, 320-365-3242

August 9-10

Senior Games, Huron, SD, Contact LaRon Clock at 605-353-8533 or Howard Bich at 605-491-0635

August 9-10

Senior Softball Tournament, Huron, SD, Contact Scott Mckaskell at 605-354-2237

August 10-11

Threshing Show, Twin Brooks, SD, 605-432-9487

August 11

Czech Heritage Festival, Bechyn, MN, 320-522-1218, www.bechynczechfest.org

August 12-18

Brown County Fair, Aberdeen SD, 605-626-7116

August 16-18

Riverboat Days, Yankton, SD, 605-665-1657

August 16-25

Central States Fair & Rodeo, Rapid City, SD, 605-355-3861

August 17-18

Threshing Bee, Rosholt, SD, 605-537-4426

August 18

St. Andrew's Fun Fest, Deep fried chicken dinner, music, games, raffles, etc. Fairfax, MN, 507-829-3225

August 20-22

Dakotafest, Mitchell, SD, 800-827-8007

August 21-25

Corn Palace Festival, Mitchell, SD, 605-995-8430

To have your event listed on this page, send complete information, including date, event, place and contact to your local electric cooperative. Include your name, address and daytime telephone number. Information must be submitted at least eight weeks prior to your event. Please call ahead to confirm date, time and location of event.