

Renville-Sibley

A Touchstone Energy® Cooperative 

February 2019 Vol. 19 No. 10

Cooperative Connections



**Commanding,
Controlling
Energy
Savings**

Page 8

**A Matter of
Territorial
Integrity**

Page 12

We'll See You

at the Member Informational Meetings and Annual Meeting



DeeAnne Newville, CEO

dnewville@renville-sibley.coop
Phone: 320-826-2593 or
Toll Free 800-826-2593

SAVE THE DATE

Renville-Sibley's 81st annual meeting will be held on Thursday, March 28, at the Island Ballroom in Bird Island.

Watch for more information in upcoming issues of the Cooperative Connections newsletter.



Most of us lead busy lives. We find ourselves multitasking, constantly checking phones and email to keep up with the demands of modern life. Thanks to technology, we can accomplish many tasks electronically and remotely to be more efficient. And with so many pressing obligations, we like to protect our “spare” time. Invitations to attend in-person meetings and gatherings are weighed carefully as we decide whether or not our time and effort to attend is beneficial. The answer to the question, “What’s in it for me?” must be compelling. You may think attending Renville-Sibley Cooperative Power Association’s member informational meetings or annual meeting would be easy to lump into the “no benefit to me” category. However, I’d ask you to think again.

Renville-Sibley exists to provide safe, reliable and affordable energy to its consumer-members (that’s you!). Equally important is our mission to enrich the lives of all members and to serve the long-term interests of our local communities. This is where you can help.

As a member of the community, you have a perspective that is valuable – and we invite you to share it with the co-op. At the member informational meetings held in February, members have the opportunity to engage directly with directors and members of the leadership team. We cover several topics like upcoming operational plans, financial results, new programs or services and legislative or regulatory updates. We use the feedback received at the member informational meetings to help us determine what should be covered in our annual meeting presentations. At the member informational meetings, we stay to answer questions and take feedback for as long as our members would like to keep talking. We believe if one member or a group of members are concerned about a topic or are happy with a specific program, there are other members who feel the same. Another advantage to attending a member informational meeting is that unlike the annual meeting that is held at one place and time, there are four member informational meetings held in different locations on different dates and times. Please see the specific dates, times and locations on Page 7 of this newsletter.

Members are also welcome to make an appointment to meet with me if they are unable to attend a member informational meeting. I will take your feedback into consideration as we prepare for the annual meeting of the members.

The annual meeting is also the time to vote for new board members who will represent you – the members of the co-op. Board members are local consumers, just like you. Even though we would love to have you at the annual meeting, you may still exercise your right to vote even if you are not able to attend in person. All members receive a ballot in the mail and may return their ballot by mail, by dropping it off at our office prior to the annual meeting or by bringing it to the annual meeting.

Renville-Sibley is one of the few local organizations that is uniquely positioned to bring together all members of the community. It is worth noting that the health of the co-op and the well-being of the community are closely intertwined.

Perhaps you may feel that you have nothing to add to the discussion, so there is no need to attend the annual meeting. However, every energy bill you pay to the co-op helps ensure better service and reliability for the whole community. Your dollars are reinvested locally into improvements that impact the reliability and affordability of your energy, and Renville-Sibley wants to hear from you.

While Renville-Sibley provides convenient electronic options for bill-paying and communication, there are times when there is no substitute for in-person engagement. When members of our community come together for a common purpose, we improve the quality of life for all in our corner of the world.

If you’ve never attended our annual meeting or if it’s been awhile, please stop by. Our co-op family looks forward to visiting with you! We’ll have food, fun and door prizes, so mark your calendar for the annual meeting on Thursday, March 28, at the Island Ballroom in Bird Island. More information on the annual meeting can be found in upcoming issues of this newsletter.

Renville-Sibley

Cooperative Connections

(USPS 019-074)

Board of Directors

Roger Manthei – Chair
Philip Nestande – Vice Chair
Alan Neyers – Secretary/Treasurer
Steve Benson
Matt Haubrich
Whitey Hinderman
Gary Peterson
Helen Ruebel
Wayland Zaske

Renville-Sibley Employees

Gene Alex – Line Superintendent
Brian Athmann – Journeyman Lineman
Shawn Beckler – Crew Chief
Mike Benson – Journeyman Lineman
Brad Braulick – Crew Chief
Nick Bruns – Operations Assistant
Anthony Carruth – Journeyman Lineman
Amy Ervin – Consumer Accounts Representative
Brayden Fischer – Journeyman Lineman
Cindy Mertens – Administrative Services Manager
DeeAnne Newville – CEO
Brandon Ochs – Journeyman Lineman
Clint Olson – Journeyman Lineman
Lenae Wordes – Communications Manager

RENVILLE-SIBLEY COOPERATIVE CONNECTIONS is published monthly by Renville-Sibley Co-op Power Association, 103 Oak Street, Danube, MN, 56230 for its members. Electric cooperative members devote 50 cents from their monthly electric payments for a subscription. Non-member subscriptions are available for \$6 annually. Periodicals Postage Paid at Danube Post Office, Danube, MN 56230 and at additional mailing offices.

POSTMASTER: Send address changes to: Renville-Sibley Cooperative Connections, PO Box 68, Danube, MN 56230; Telephone (320) 826-2593; Toll Free 1-800-826-2593; Fax (320) 826-2679;

Web site: www.renville-sibley.coop

This institution is an equal opportunity provider and employer.

TEENS:

You Could Win a Trip to D.C.

Each year, rural electric cooperatives across the nation sponsor roughly 1,900 students on the Rural Electric Youth Tour to Washington, D.C. The Youth Tour program continues to foster the grassroots spirit of the rural electric cooperatives by demonstrating to high school juniors and seniors how our government works and what the electric cooperative business model is all about. The past three years, Renville-Sibley has sponsored Megan Hoff, Amy Albrecht and Andrew Black as our Youth Tour delegates.

In 2019, Renville-Sibley will be sending one high school junior or senior on an all-expenses-paid trip to the Washington, D.C., Youth Tour. The selected student will spend six days in our nation's capital visiting museums, chatting with politicians and making memories and friends that will last a lifetime. What is the best part of this trip? The best part is the fact that Renville-Sibley will pay all of the expenses.

More information and how to apply can be found below.

Contest purpose:

Select one youth to represent Renville-Sibley Co-op Power at the Washington, D.C., Youth Tour.

Eligibility:

The contest is open to any current high school junior or senior whose family is a member of our cooperative.

Requirements:

Contestant shall write a 300-word essay on, "What makes you a good candidate to represent Renville-Sibley Co-op on the 2019 Youth Tour and what do you expect to gain from your Washington, D.C., experience?"

Complete a Youth Tour application form which can be found on Renville-Sibley's website at www.renville-sibley.coop.

Additional Information:

- Deadline for application is Feb. 20.
- The winner will be announced by March 11, 2019.



■ Tour Dates: June 15-20, 2019.

Sample itinerary (subject to change):

■ Saturday, June 15

- Travel day
- Electric Cooperatives 101 class

■ Sunday, June 16

- Walking tour of monuments, Arlington Cemetery, Smithsonians, night monument tour

■ Monday, June 17

- Mount Vernon, National Museum of the Marine Corp, Old Town Alexandria and NRECA Youth Night

■ Tuesday, June 18

- Group picture in front of White House, Newseum, National Achieves, Smithsonians, Holocaust Museum, John F. Kennedy Center Performing Arts Center show

■ Wednesday, June 19:

- Library of Congress, U.S. Capitol tour, visit the Galleries, Capitol visits with senators and representatives, U.S. Botanical Gardens, Souvenir City
- NRECA dinner and dance

■ Thursday, June 20:

- Travel day

More information can be found at the National Youth Tour website <http://youthtour.coop>

Downed and Dangerous

Downed power lines can be deadly. ALWAYS assume a downed power line is live and avoid going near it or anything in contact with it.

Use Precaution

- Downed power lines can energize the ground up to 35 feet away.
- If you see a downed power line, immediately notify local authorities.
- Never drive over downed power lines or through water that is in contact with them.
- Never try to move a downed power line. Even using items that typically are not conductive will not prevent injury or death.

Know What to Do

- The safe way to move away from a downed power line is to shuffle away with small steps, keeping your feet together and on the ground at all times.
- If your car comes in contact with a downed power line while you are inside, stay in the car. Do not touch any part of the car's frame or any other metal. Use a cell phone or honk your horn to summon help. Allow only rescue personnel to approach the car.
- If your car is in contact with a downed power line and you must exit due to fire or another imminent threat:
 - Do not touch your vehicle and the ground at the same time with any part of your body or clothing.
 - Open the door to your vehicle without touching the metal door frame.
 - Jump out of the vehicle with both feet together and so both feet land at the same time.
 - Shuffle away so that the toe of one foot shuffles forward along the length of the other foot, ensuring that both feet are in constant contact and always touching the ground.
- If someone comes in contact with a downed power line or something else that has become electrified, call 911 immediately.
- Never touch someone who has come in contact with a power line. They are energized and pose a danger to anyone who comes in contact with them.
- Remember power lines don't have to fall in order to be dangerous. Always call 811 before you dig and keep yourself and your equipment at least 10 feet from overhead power lines.

Source: esfi.org

Getting Involved

The state legislatures of both Minnesota and South Dakota convened in early January. Need to contact your legislator while in Pierre or Saint Paul? Here's how:

Contacting Members of South Dakota's Legislature:

Go to <http://sdlegislature.gov/>. From there, you can search your senator or representatives, see the committees which they are assigned and send them an email. Need to reach them by phone? You can call and leave a message with the Senate at 605-773-3821 or with the House of Representatives at 605-773-3851. You can also send a fax to 605-773-6806.

Contacting Minnesota Legislators:

For contact information on Minnesota house members, visit:

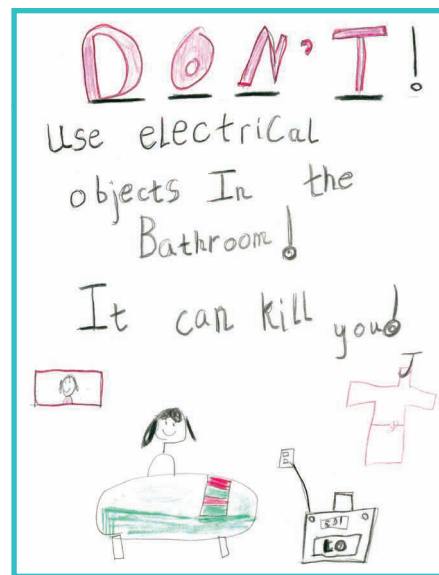
<https://www.house.leg.state.mn.us/members/hmem.asp>

For contact information on Minnesota senators, visit:

<http://www.senate.leg.state.mn.us/members/index.php?ls=%20-%20header>



KIDS CORNER SAFETY POSTER



"Don't use electrical objects in the bathroom. It can kill you!"

Gracie Biggins,
7 years old

Gracie is the daughter of Jessy and Katie Biggins, Gregory, S.D. They are members of Rosebud Electric Cooperative, Gregory.

Kids, send your drawing with an electrical safety tip to your local electric cooperative (address found on Page 3). If your poster is published, you'll receive a prize. All entries must include your name, age, mailing address and the names of your parents. Colored drawings are encouraged.

Bountiful Brunch

Slow Cooker Monkey Bread

- | | |
|---------------------------------------|---|
| 1 cup (2 sticks) butter | 1/2 cup granulated sugar |
| 1 cup firmly packed light brown sugar | 2 (16.3 oz. each) cans flaky layers refrigerated biscuits, each biscuit cut into 6 pieces |
| 1 T. ground cinnamon | |

Spray 6-quart slow cooker and outside of wide mouth glass jar with no stick cooking spray. Place glass jar in middle of slow cooker. Melt butter in small saucepan on medium heat. Add brown sugar and stir to combine; set aside. Place cinnamon and granulated sugar in large resealable plastic bag. Add biscuit pieces in batches and shake to coat. Place 1/2 of the biscuit pieces in slow cooker around glass jar. Pour 1/2 of the butter mixture over biscuit pieces. Place remaining coated biscuit pieces in slow cooker. Sprinkle with any remaining cinnamon-sugar mixture in bag. Pour remaining butter mixture evenly over top. Cover slow cooker with clean kitchen towel then with slow cooker lid to secure towel. Cook 1 hour on HIGH. Carefully remove slow cooker insert and rotate. (This allows monkey bread to cook evenly.) Cook 1 hour longer or until toothpick inserted in center comes out clean. With towel and lid still secure, remove slow cooker insert from heat. Let stand 10 minutes. Carefully remove glass jar. Invert monkey bread onto serving platter. Makes 18 servings.

Nutritional Information Per Serving: Calories 302, Total Fat 14g, Saturated Fat 8g, Protein 3g, Cholesterol 27mg, Sodium 491mg, Carbohydrates 41g, Fiber 1g

Pictured, Cooperative Connections

Oatmeal Pancakes

- | | |
|---------------------------|--------------------------|
| 2 eggs, separated | 1/3 cup flour |
| 2 cups warm milk | 2-1/2 tsp. baking powder |
| 2 cups quick cooking oats | 1 tsp. salt |
| 1/3 cup oil or shortening | |

Beat egg whites until stiff. In separate bowl, add warm milk to oatmeal; let set a few minutes. Add egg yolks. Mix in oil, flour sifted with baking powder and salt; mix well. Fold in whipped egg whites. Heat a nonstick griddle over medium heat. Coat pan with cooking spray. Spoon about 2-1/2 T. batter per pancake onto griddle. Turn pancakes over when tops are covered with bubbles; cook until bottoms are lightly browned.

Elfrieda Postma, Sioux Falls, SD

Wake-up Casserole

- | | |
|--------------------------------|-----------------------------|
| 8 frozen hash brown patties | 7 eggs |
| 4 cups shredded Cheddar cheese | 1 cup milk |
| 2 cups cubed ham | 1/2 tsp. salt |
| | 1/2 tsp. dry mustard powder |

Place hash brown patties in a single layer in a greased 9x9-inch glass dish. Sprinkle with cheese and ham. In bowl, beat eggs, milk, salt and mustard together. Pour over ham and cheese. Cover and bake at 350°F. for 1 hour. Uncover and bake an additional 15 minutes until edges are golden brown and knife inserted in center comes out clean. Makes 8 servings.

Mary Jessen, Holabird, SD

Eggs Benedict Casserole

- | | |
|-----------------------------|---|
| 8 large eggs | into 1/2-inch pieces |
| 3 cups milk, divided | 6 English muffins, cut into 1/2-inch pieces |
| 3 green onions, chopped | 1/2 tsp. paprika |
| 1 tsp. onion powder | 1 (.9 ounce) pkg. hollandaise sauce mix |
| 1 tsp. salt | |
| 3/4 lb. Canadian bacon, cut | 1/4 cup butter |

Spray 9x13-inch baking dish with cooking spray. Whisk eggs, 2 cups milk, green onions, onion powder and salt together in a large bowl until well mixed. Layer half the Canadian bacon in prepared baking dish. Spread English muffins over meat and top with remaining Canadian bacon. Pour egg mixture over casserole. Cover baking dish with plastic wrap and refrigerate overnight. Sprinkle casserole with paprika; cover with aluminum foil. Bake at 375°F. until eggs are nearly set, about 30 minutes; remove foil. Continue baking until eggs are completely set, about 15 more minutes. Whisk hollandaise sauce mix with 1 cup milk in a saucepan. Add butter and bring to a boil, stirring frequently. Reduce heat to medium-low, simmer and stir until thickened, about 1 minute. Drizzle sauce over casserole.

Cortney Reedy, Tea, SD

Please send your favorite seafood, appetizer, beverage or casserole recipes to your local electric cooperative (address found on Page 3). Each recipe printed will be entered into a drawing for a prize in June 2019. All entries must include your name, mailing address, phone number and co-op name.



Renville-Sibley Co-op's rebates and incentives can save you money.

Renville-Sibley Co-op Power

Rebates and Incentives

Incentives:

- 5 percent interest loans available for equipment, service upgrade and installation of qualified heat systems (up to \$15,000 for up to five years with approval)
- Minimum qualifications must be met for all marketing programs

Non Commercial Electric Heat Rebates:

(replacement incentive offered after 10 years)

- \$800 Geothermal Heat Pump
- \$800 Air-to-Air Heat Pump
- \$200 Mini-Split/Ductless Heat Pump (must be ENERGY STAR®-certified)
- \$400 Non ENERGY STAR® Heat Pump

To qualify for the geothermal and air-to-air heat pump, equipment must be new, at least two ton and a HSPF greater than or equal to 8.5. Contact the office for commercial, industrial or agricultural rebate information:

Special Discount Rates:

Separately metered electric heat and controlled A/C is only 5.9 cents/kWh!

Contact the office for details. – There is a \$2 per month charge for all discount meters.

Electric Water Heater Rebates:

(replacement incentive offered after 10 years)

- \$6/gallon – Marathon® Lifetime Warranty Units
- \$100 bonus rebate for new home or fossil fuel conversion
- \$6.50 monthly credit for controlled electric water heater

Due to space constraints, Renville-Sibley will only stock 100-gallon grid enabled water heaters. Warranty replacements for 50-gallon water heaters can be handled by places such as Menards or Home Depot. Renville-Sibley will offer warranty replacements for 85-gallon water heaters.



Nonresidential Efficient Lighting Replacement Program:

Renville-Sibley offers a rebate of \$.30/watt saved for the replacement of inefficient lighting systems in nonresidential installation. The maximum rebate amount is

\$1,000 per member per calendar year and a maximum of up to 50 percent of the total project cost. The minimum rebate is \$50.

Energy Star® Rebates:

- \$100 – Refrigerator (requires proof of disposal of existing unit)
- \$200 – Central Air-Conditioner
- \$50 – Dishwasher
- \$50 – Clothes Washer
- \$50 – Clothes Dryer
- \$100 – Freezer
- \$25 – Dehumidifier
- \$25 – Room Air-Conditioner
- \$5 – LED Light Bulb (bulb must be a minimum of 8 watts, maximum of 20 bulbs per location)
- \$35 – Disposal rebate for refrigerator or freezer currently in service (requires proof of disposal)

(ENERGY STAR® Rebates are capped annually; contact the office to verify status of program.)



All rebate forms can be found at www.renville-sibley.coop
For more information, please contact us at 800-826-2593 or 320-826-2593.

Operation Round Up[®] Board of Trustees Needed

Lenae Wordes

lwordes@renville-sibley.coop

In the January 2019 issue of *Cooperative Connections*, I talked about a new program Renville-Sibley is starting, which is Operation Round Up[®]. Each month, the member's electric bill is rounded up to the next dollar amount with the difference put into a separate fund for donating to area organizations. The average member donates \$6 with a maximum possible contribution of \$11.88 per year. This program will be rolled out to the membership beginning with the June 2019 energy bill.



This fund is managed by a board of trustees which is different from the cooperative's board of directors. The responsibility of the board of trustees is to review applications from organizations requesting funds and determine where to donate and how much to give each organization. The board of trustees will consist of three active members of the cooperative, one member from each of our three districts. A trust board member may serve two consecutive terms of three years and may be reappointed to the trust board after being absent from the board for three years. The trust board will meet quarterly to review applications. We anticipate the trust board to begin meeting sometime in 2020. Since the fund is just beginning in June of 2019, it will take some time to build up enough funds for distribution to various organizations. 859100

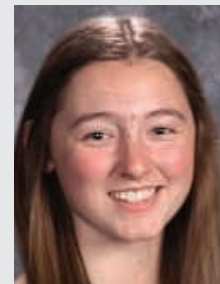
If you are interested in serving on the Operation Round Up Board of Trustees, now or in the future, please let me know. I will add your name to a list of those interested in serving from your district. Our board of directors will select one member from each district to serve on the trustee board. I will be discussing Operation Round Up at our upcoming member meetings. If you would like more information on Operation Round Up or serving on the board of trustees, please contact me at 800-826-2593 or visit with me at any of the Member Informational Meetings.

Comparative Report

	Current (through Nov. 30)	One Year Ago (through Nov. 30)	10 Years Ago (through Nov. 30)
Average Number of Consumers	1,882	1,885	1,964
kWhs Purchased	172,490,959	156,586,049	146,692,209
Cost of Purchased Power	\$10,294,458.24	\$9,732,456.24	\$4,904,402.48

Scholar Honored

Congratulations to Addie Toren from BOLD High School for being selected as the December Scholar of the Month. She was nominated because she always does her best in every aspect including participating in solo/ensemble contests, accompanying the choir with her flute when needed and playing her flute for the St. Mary's Church Choir on Sundays.



Addie Toren
BOLD High School

More information on the Scholar of the Month program can be found on our website www.renville-sibley.coop under the Customer Service tab.

Thank you...

I'd like to thank you and everyone at Renville-Sibley who helped me with my recent project. Your crews did an outstanding job yesterday! As always, they were efficient and professional and my project would not have been possible without them.

Over the years I've had the chance to interact with many different people in the Renville-Sibley organization and without exception, I've been extremely impressed with their willingness to help and to provide customer service of the highest quality.

Thank you, again, for your kind assistance.

Best regards,

Paul

Renville-Sibley to hold Member Information Meetings

Each year, Renville-Sibley holds member informational meetings throughout the service area. These meetings are held at various days and times with the hope that if one day or time doesn't work for a member, another day or time might. All members are encouraged to attend these meetings to learn more about Renville-Sibley and the electric industry. This year, the schedule is as follows:

- Saturday, Feb. 23, at 9 a.m. – Danube – Community Center
- Monday, Feb. 25, at 6:30 p.m. – Bird Island – Athmann's Inn
- Tuesday, Feb. 26, at 9 a.m. – Fairfax – Lion's Den
- Thursday, Feb. 28, at 1:30 p.m. – Sacred Heart – Community Center



Your HVAC system could learn your schedule and regulate heating and cooling for your comfort based upon when you are home.

COMMAND, CONTROL AND ENERGY SAVINGS

Co-op Members Can Benefit from Technology

Derrill Holly

NRECA

Artificial intelligence is changing the way we live and that has the potential to bring major changes to the way we use energy.

Smart home automation, with a utility connection, allows folks from all income levels to become more energy efficient to varying degrees. Using a platform to further tie together appliances and loads, consumers can pick and choose their preferred efficiency routes depending on their lifestyle and budgets.

Turning Words to Actions

According to the Consumer Technology Association, about 5.5 million Wi-Fi-enabled devices are added to the internet each year and by 2020, the total is expected to surpass 21 billion. That has designers and manufacturers of consumer products looking for new ways to add value to their products with Wi-Fi enabled features.



More than 5.5 million Wi-Fi-enabled devices are added to the internet each year. By 2020, the total is expected to surpass 21 billion.

As artificial intelligence devices create opportunities for home automation, consumers will play larger roles in deciding how and when systems in their home are controlled.

Smart thermostats have been around for a while and models that interconnect with home automation systems, like Amazon's Echo, the Wyse Hub and Google Home, get a lot of attention. Apps developed for those products are also available for both Android and iPhone. Many electric cooperatives are offering discounted smart thermostats to not only encourage member savings, but also help manage peak energy demand.

Changing Sources, Changing Needs

As the energy sources we use to generate power evolve and management of the electric grid becomes more agile and sophisticated, the true potential of energy load control provides opportunities for more savings through wholesale power supply. That's challenging electric co-ops to find additional ways to strengthen partnerships with consumer-members who are more interested than ever in actively managing their energy use. Two-way, real-time communications and artificial intelligence offer opportunities to learn consumer preferences and how best to reduce energy during peak demand periods.

New All-Electric Homes

Home automation controllers and smart phone apps are producing an endless string of new commands daily and while

many may not work seamlessly, they are likely to continue to improve.

"We could soon see serial commands allowing your appliances to interact with other devices," said Keith Dennis, senior director of strategic initiatives for the

An all-electric home with energy efficient products and automation features could enhance a consumers' experience.

National Rural Electric Cooperative Association (NRECA), who cited household systems including heat pumps and heat pump water heaters as examples.

"Your HVAC system could learn your schedule and regulate heating and cooling for your comfort based upon when you are home," said Dennis. "Instead of maintaining a steady supply of hot water when no one is home to use it, water could be heated during periods when demand is lowest and electricity costs less and then boosted to ideal temperatures to meet specific needs like bathing, laundry or washing dishes."

Many electric co-ops have supported water heater load control programs for decades. Consumers are not overly concerned

about when their water is heated as long as it is available on demand.

"Manufacturers and vendors are actually building shared access and control into these systems with utilities," said Dennis. "The most successful models in the end will work seamlessly with the co-op to provide value to the member and not necessarily something that is directly managed by the member."

According to Dennis, new induction stovetops, energy efficient convection ovens and some countertop appliances offer more opportunities for efficiency in the kitchen – and the common trait of these efficient products is that they are all electric. An all-electric home with energy efficient products and automation features could enhance a consumers' experience.

While consumers are not expected to quickly embrace many of these new options until they reach the "plug-and-play" level of convenience, smart appliances and home automation systems could within a few years lead to rebates and other incentives designed to encourage electric co-op members to retire older appliances to enhance their home's energy efficiency.

Derrill Holly writes on consumer and cooperative affairs for the National Rural Electric Cooperative Association, the national trade association representing more than 900 local electric cooperatives. From growing suburbs to remote farming communities, electric co-ops serve as engines of economic development for 42 million Americans across 56 percent of the nation's landscape.



December Board Meeting Highlights

The December board meeting was held on Thursday, Dec. 20, at 9 a.m. All board members were present except Philip Nestande. Others present were CEO DeeAnne Newville, Gene Alex and Lenae Wordes.

The board reviewed and approved the following items:

- Minutes of the November board meeting
- Operating and disbursement reports for the month of November
- Safety report for December
- Write off of accounts receivable
- Schedule A = Standard Pricing Guide
- Policy 101 – Policy Formation and Approval
- Policy 175 – Operation Round Up*
- Policy 311 – Security Deposits
- Policy 412 – Idle Services
- NRECA Annual Meeting Voting Delegates

- Nominating Committee appointments for District 1

The board reviewed:

- List of new members and capital credits transferred
- Reports from staff members as to the activities in their department. Items in the reports include:
 - High level Statement of Operations review – YTD – November 2018 (unaudited)
 - Organization activities
 - East River update
 - Basin Electric update
 - NRECA Update
 - MREA Update
 - Line crew work in progress, equipment update and outage update
 - Delinquent account
 - Christmas Open House
 - 81st annual meeting

Please contact the Renville-Sibley office if you would like more information regarding the board meeting.

FREE Want Ad Service

Members can submit ads for the following categories: Giveaway, For Sale, For Rent and Wanted. Ads should be or are limited to no more than 15 words and must be received by the first of the month to be included in the following month's newsletter. Renville-Sibley reserves the right to edit content or exclude ads due to space restrictions. Ads will be run one time only unless resubmitted. Please complete the following information and mail to the Renville-Sibley Cooperative Power, PO Box 68, Danube, MN 56230.

Name: _____

Address: _____

Phone number: _____

Ad to be placed (limit of 15 words per ad)

Type of ad: ☐ Giveaway ☐ For Sale ☐ For Rent ☐ Wanted

Where's the Number?

Last month, Merlin Hebrink found his member number in the newsletter. Congratulations, Merlin! The credit will start over with a value of \$10. Another number has been hidden in this newsletter. If you find your number and call the office by Feb. 4, you will receive this credit on your electric statement. Good luck in your search!

Outage Report

affecting 10+ members

Date: 12-4-18
Time off: 9 a.m.
Time on: 11:30 a.m.
Substation: Henryville and Troy
Cause: Scheduled outage

Please contact Renville-Sibley's office for more details about these power outages.

Energy Efficiency Tip of the Month

Laundry Tip:

Dry towels and heavier cottons separately from lighter-weight clothing. You'll spend less time running the dryer for lighter-weight items, which saves energy.

Source: Energy.gov



Notice: The January board meeting will be held on Monday, Jan. 28, at 9 a.m. The February board meeting will be held Monday, Feb. 25, at 9 a.m.

OLD EXIT SIGNS?

Old exit signs can cost business owners more than \$28/year EACH to operate!

Together we are

RE-ENERGIZING EFFICIENCY



Mission Statement

Renville-Sibley Cooperative Power Association will provide efficient, reliable electric energy and services to enhance the quality of rural living.



BEWARE GALLOPING LINES

Safe Electricity.org

WHEN WINTER WINDS HOWL, POWER LINES CAN GALLOP

Safe Electricity

SafeElectricity.org

Severe weather with strong winds can cause damage to trees, buildings and electrical equipment. While power lines can sway in high winds, add freezing rain or icy conditions and the result can be galloping power lines.

Galloping is the bouncing or bucking movement of overhead lines and can cause several problems, from temporary power interruptions to equipment damage, the collapse of power poles and downed lines.

Galloping lines often result from ice buildup on one side of the power line due to strong winds. The buildup of ice creates an airfoil, which changes the flow of air around the line, causing bouncing wires or galloping power lines.

There isn't much utility workers can do until the wind dies down. That's why many power lines have objects, like twisted wire or round or angular pieces of metal, attached to the line. These help reduce galloping of lines and prevent potential danger.

If you see galloping power lines:

- Keep your distance – ice can break off or power lines break loose.
- Contact your utility to make them aware of the potential damage as soon as possible.

If you see a downed line:

- Stay far away and warn others to stay away too.
- Remember, a downed line can remain energized even if it is not sparking or arcing.
- Always report the location of a downed power line and damaged electrical equipment.

Be sure to have a storm preparedness kit ready before a storm strikes to help get you and your family through a power outage. This kit should include bottled water, non-perishable food, blankets, warm clothing, first aid kit/medicine, flashlight, radio, extra batteries and toiletries.

To learn more about storm and outage safety, visit SafeElectricity.org.

During the 2019 South Dakota legislative session, electric cooperatives are seeking fairness in territory integrity.

CO-OPS SEEK TERRITORY INTEGRITY

Fairness Sought When Government Takes Over

Brenda Kleinjan and Jocelyn Romey

editor@sdrea.coop

As the 2019 South Dakota legislative session hits full stride this month, South Dakota electric cooperatives are seeking a fix to a decades-old issue: territory integrity.

The issue has been an ongoing one. It comes to a head periodically when municipal governments take over the territories of cooperatives or investor-owned utilities. For cooperatives, these are areas where the co-ops have served for decades and have incorporated into long-range planning.

What are the issues?

There are two sets of rules that govern changes in South Dakota electric service territory. By law, electric cooperatives and investor-owned utilities (IOU) must collaborate and agree upon changes in service territory between the two. Municipal governments, on the other hand, have the authority to expand their electric service boundaries and take territory from incumbent electric providers. These

differences in the rules favor government-taking of private enterprise.

Electric cooperatives have built the infrastructure needed to serve all areas of their territories. When municipal utilities take away the electric service areas of those co-ops, the infrastructure, including generation, transmission, substations and distribution assets, that has been put into place to serve the load becomes useless. The municipal-taking of incumbent utility territory also greatly limits the incumbent's ability to plan for the future in areas neighboring a municipal utility because the territory is so easily seized by the local government.

Ultimately, South Dakota's consumers are the ones being hurt when the service areas of electric cooperatives are reduced. The left-behind cooperative members bear a greater share of the fixed operating costs, increasing their electric bill. There are fewer members to cover infrastructure and generation costs when a territory is reduced in size. This is especially detrimental to affordability for the members of not-for-profit electric cooperatives.

Why now?

This is an ongoing issue that has never been resolved. Yes, there have been a few amendments made to the law over the years. These amendments have attempted to provide compensation for seized electric service territory. However, the compensation formula doesn't work. Additionally, the efforts of electric cooperatives to work collaboratively with municipals in resolving this issue have been consistently rebuffed, co-op leaders say.

"Applying the same rules to all electric utilities operating in the state will NOT impede municipal annexations. It will force municipal governments to engage in the same conversations about fairness and equity that an investor-owned utility and a cooperative must consider when making individual customer exchanges or making permanent changes to the boundaries," said Ed Anderson, general manager of the South Dakota Rural Electric Association.

Territorial Integrity is Essential

Current System is Flawed:

Munis can. We can't.

- Municipal utilities can take utility service territory.
- Rural electrics and IOUs can't.

Government Takeover of Private Property.

- Munis can annex and extend service with no negotiations or PUC oversight.
- Selective "taking" of prime territory.
- Cooperatives are ready to serve and can offer highly competitive rates.

Negative Impacts on Utilities, Consumers and Economic Development.

- Upsets long-term planning and duplicates services.
- Reduces growth opportunities and ability to spread costs to a greater number of consumers – it impacts the entire membership.
- Hinders economic development.

Solution:

PROTECT assigned service territories

RETAIN privately negotiated agreements with Public Utilities Commission approval

NO RESTRICTIONS on annexation

South Dakota Laws on Electric Service Territory Boundaries

The original law passed in 1975 established the purchase price for electric facilities in areas annexed by municipalities. The law gave the city 90 days following annexation to offer to purchase the facilities and services rights. The portion of the formula that covers the purchase of wires and poles has not changed over the years. What has changed is the compensation for service rights portion of the formula. As initially placed in statute, the purchasing municipal electric system had to pay 25 percent of gross receipts from power sales to consumers within the annexed area for a period of five years at the municipal utility rate.

- The 1975 law, which was very similar to laws passed in many states at roughly the same time, was designed to protect consumers from the costs and confusion associated with rapid growth and duplication of services associated with that growth. Since then, few states have opened this essential service to full competition and industrial customers, not the average residential or small business customer, have benefited from those changes. South Dakota chose to address the specific needs of large industrial customers by making those loads competitive.
- The 1992 amendment changed that part of the formula to: 25 percent of gross receipts from power sales to consumers within the annexed area for a period of seven years at the incumbent utility rate and extended the time given to the municipality to decide whether they want to purchase from 90 days to one year.
- The 2009 amendment changed that part of the formula to: as compensation for service rights, an annual amount equal to the sum of 25 percent of the gross revenues received from power sales to consumers of electric power within the annexed area. The obligation of the annexing municipality to compensate the utility for service rights shall continue for 11 years from the date of the offer to purchase by the annexing municipality. During the 11-year period, compensation for service rights to any one customer location within the annexed area shall be paid by the annexing municipality for a period of seven years or until the expiration of the 11-year period, whichever is less. Gross revenues received shall be determined by applying the rate in effect by the municipality at the time of purchase.

So, the latest amendment extended the overall window from seven to 11 but retained the seven-year cap per customer and went back to the muni rate at the time of purchase.

Are You Interested in a New Adventure?

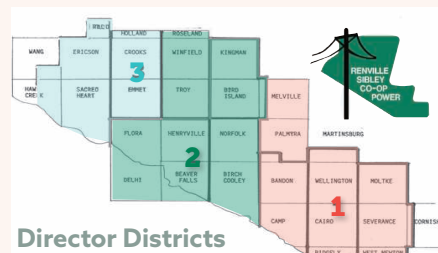
Renville-Sibley Cooperative Power Association is beginning to plan for the 81st annual meeting of the membership that will be held March 28, 2019, at the Island Ballroom in Bird Island, Minn. Three (3) directors will be elected during that time, each for a three-year term.

The First District, consisting of the townships of Cornish, Severance and Moltke in Sibley County; the townships of Ridgely and West Newton in Nicollet County; and the townships of Cairo, Wellington, Martinsburg, Camp, Bandon and Palmyra in Renville County is represented by Alan Neyers, Whitey Hinderman and Philip Nestande. Whitey Hinderman's term will expire in 2019.

The Second District, consisting of the townships of Honner and Delhi in Redwood County and the townships of Beaver Falls, Flora, Henryville, Birch Cooley, Norfolk, Melville, Bird Island and Kingman in Renville County is represented by Helen Ruebel, Wayland Zaske and Matt Haubrich. Wayland Zaske's term will expire in 2019.

The Third District, consisting of the townships of Roseland and Holland in Kandiyohi County, Rheiderland in Chippewa County and the townships of Troy, Winfield, Emmet, Crooks, Sacred Heart, Hawk Creek, Ericson and Wang in Renville County is represented by Steve Benson, Gary Peterson and Roger Manthei. Steve Benson's term will expire in 2019.

Contact the Renville-Sibley Co-op Power office for more information on running for the board of directors.



As stated in the Renville-Sibley bylaws, the following is the Qualifications and Tenure for the position of Director:

- Each director shall be a member of the Cooperative and shall be elected by the members within their respective district at the annual meeting of the members for a term of three years. No member shall be eligible to become or remain a director or to hold any position of trust in the Cooperative who is not a bona fide resident in the area served by the Cooperative, or who is in any way employed by or financially interested in a competing enterprise or a business selling electric energy or supplies to the Cooperative, or a business primarily engaged in selling electrical or space heating/cooling appliances, fixtures, or supplies to the members. When a membership is held jointly by two or more persons, including husband and wife, only one of such joint tenants may be elected a director, provided, however, that neither one shall be eligible to become a director, unless all shall meet the qualifications herein set forth.

Director qualifications required for service to the cooperative shall include:

- A. Must be an individual and must be at least 18 years of age.
- B. Must be competent and able to execute a contract.
- C. Must not have been convicted of a felony or gross misdemeanor during the preceding 5 years prior to becoming a director for the Cooperative or during the period while serving as a director.
- D. Must have a high school diploma or equivalent.
- E. Must make a reasonable effort to become and remain knowledgeable about special issues regarding electric cooperatives by attending training, workshops and seminars.
- F. Must attend at least three-fourths (3/4) of all monthly scheduled board meetings during any twelve (12) month period.

Upon becoming a candidate for and/or to remain a Director, an individual must

complete an annual conflict of interest disclosure form, approved by the Board of Directors. All Directors and/or Director candidates must comply with or meet the following conflict of interest qualifications:

- A. Shall not be a close relative of an existing Director, employee, agent or representative of the Cooperative other than an existing Director who will cease being a Director upon the candidate assuming office;
- B. Within 5 years immediately prior to becoming a Director, shall not have been a Cooperative Officer, employee, agent or representative of the Cooperative or any subsidiary or affiliated company;
- C. Shall not be employed by, materially affiliated with, nor share a material financial interest with any current Director;
- D. Shall not be engaged in any business, nor employed by, nor materially affiliated with, nor have a material financial interest in any individual or entity that:
 1. Is regularly, directly, and substantially competing with the Cooperative or any other entity that the Cooperative controls or in which the Cooperative owns a majority interest (Cooperative Subsidiary).
 2. Is regularly selling goods and services to the Cooperative or the Cooperative Subsidiary.
 3. Possesses a substantial conflict of interest with the Cooperative or the Cooperative subsidiary.
- E. A former Director is ineligible for employment by the Cooperative for five years following the end of the tenure as a Director.

As a Director, the member agrees to:

- Abide by, promote and uphold the Articles of Incorporation and By-laws, both of which can be found on our website, and Policies of Renville-Sibley Cooperative Power Association.
- Attend regular and special Board meetings of the Cooperative.
- Attend, when appointed, committee meeting of the Cooperative.

If anyone should decide to seek candidacy for the board of directors, there are many rewards to be enjoyed when elected. A director has the opportunity to demonstrate their leadership quality and increase

their knowledge within the cooperative business environment and the electric industry. As a director, this person could play a significant role in the future development of Renville-Sibley Cooperative Power Association.

A director also has a very important responsibility which is to uphold and abide the bylaws of the cooperative. Directors are to act as the trustees for the assets of the cooperative and are assigned the duties of formulating, approving and reviewing the policies that provide guidelines for the cooperative.

The board is responsible for sending representatives to the affiliated association meetings that often include voting requirements. They include East River Electric Power Cooperative, Minnesota Rural Electric Association, Basin Electric Power Cooperative, National Utilities Cooperative Finance Corporation, CoBank, Cooperative Network and the National Rural Electric Association.

Directors attend seminars and meetings of several organizations to learn about the industry. Directors are asked to lobby and remain informed on legislative issues that could impact this industry and/or the cooperative way of doing business. The Board meets monthly and reviews financial reports, work plans, annual audits, planning documents and evaluates the cooperative operations while approving budgets and purchases.

Most of all, a director should be available to visit with their constituents and have a genuine spirit of helping others at all times.

Board meetings are typically held on the last Monday of every month, beginning at 9 a.m. in December, January and February and beginning at 8 a.m. the rest of the year. The estimated time needed to be committed annually is approximately 30 days which includes monthly meetings and committee assignments. Directors are compensated per diem for their time as well as all personal expenses.

If you are interested in becoming a candidate for the Renville-Sibley Board of Directors, contact the Renville-Sibley office at 1-800-826-2593 before Feb. 1 for further information.



Scholarships to be Awarded

Renville-Sibley Cooperative Power Association will be offering \$4,000 in scholarship money to students in this region. The scholarships are for the 2019-2020 school year.

Renville-Sibley is allocated a \$1,000 scholarship from Basin Electric to be awarded at the discretion of the cooperative. Another \$1,000 scholarship is from Renville-Sibley.

A committee of Renville-Sibley board members, as well as an employee of the cooperative, will select the recipients of the \$1,000 Basin Electric Scholarship and the \$1,000 Renville-Sibley Scholarship. These scholarships will be awarded based on a combination of SAT/ACT scores and overall grade-point average, work experiences, participation in school and community activities, a personal statement of career goals and a written recommendation by a third party. Additional consideration will be given to applicants interested in a position related to the electric industry for the Renville-Sibley scholarship.

The remaining two, \$1,000 scholarships are distributed from uncashed capital credit checks and are awarded by a random drawing at the annual meeting from the remaining completed applications.

All scholarship applicants must be U.S. citizens and a dependent of a member of Renville-Sibley Cooperative. They must be a high school senior who plans to enroll as a full-time student in an undergrad-

uate course of study at an accredited two-year or four-year college, university or vocational/technical school. Applications will be accepted until Feb. 20, 2019. Winners will be announced to the public at the cooperative's annual meeting on March 28, 2019.

Renville-Sibley participates with other Minnesota electric cooperatives in sponsoring the continuation of the Jay York Scholarship. York was a Lake Wilson farmer who dedicated his life to the rural electric program and to education in rural Minnesota. He was the first Minnesotan to serve as president of the National Rural Electric Cooperative Association (NRECA). Scholarships are available each year from this program and are selected by random drawing. Each participating cooperative may submit one candidate's name for the drawing. The amount of this scholarship is determined based on the number of cooperatives that participate in the program. Over the past 20 years, Renville-Sibley has awarded eight Jay York scholarships.

Only one completed application is required for an applicant to be considered a candidate for any of the available scholarships. Incomplete applications will be excluded. For more information and a scholarship application form, contact Renville-Sibley at 1-800-826-2593 or 826-2593. Application forms are also available at our website www.renville-sibley.coop.

January 17

Community Club Annual Banquet, Dinner catered by The Knotty Pine Supper Club, Entertainment by Comedian Scott Novotny, Elkton, SD Tickets 605-542-2681

January 18-19

Media One Funksi, Sioux Falls, SD, 605-339-0000

January 18-19

Winter Show, Sisseton, SD, 605-698-7261

January 18-20

Winterfest, Lead, SD, 605-584-1100

January 25-26

Snowmobile Rally, Deadwood, SD, 605-578-1876

January 25-26

Living History Fair, Lake Area Technical College, School children only on Friday, Open to public on Saturday, Watertown, SD, 605-881-1758

January 25-February 3

Annual Black Hills Stock Show & Rodeo, Rapid City, SD, 605-355-3861

January 26

Sioux Empire on Tap, Sioux Falls, SD, 605-367-7288

January 26-27

Dakota Territory Gun Show, National Field Archery Building, Yankton, SD, 605-665-4537

February 1-3

11th Annual Winterfest of Wheels, Convention Center, Sioux Falls, SD, 605-231-3100

February 2

Lake Hendricks Fishing Derby, Hendricks, MN, 507-828-2113

December 15-March 31:
South Dakota snowmobile trails season, Lead, SD, 605-584-3896



Photo courtesy: travelsouthdakota.com

February 2-3

Dakota Territory Gun Show, Dakota Event Center, Aberdeen, SD, 701-336-7533

February 5-9

Winter Farm Show, Watertown, SD, 605-886-5814

February 8-10

Black Hills Sports Show & Outdoor Expo, Rapid City, SD, 605-939-1812

February 9-10

Dakota Territory Gun Show, Trophy Show - The Big One, Convention Center, Sioux Falls, SD, 605-630-2199

February 15-17

Annual Artists of the Plains Art Show and Sale, Sioux Falls, SD, 605-274-4007

February 15-17

Annual Frost Fest, Brookings, SD, 605-692-6125

February 16-17

Dakota Territory Gun Show, Ramkota River Centre, Pierre, SD, 605-280-2438

February 21-23

Sno Jam Comedy Festival, Sioux Falls, SD, siouxfallssnojamcomedyfest@gmail.com

February 22-23

State Wrestling Tournaments, Rushmore Plaza Civic Center, Rapid City, SD, 605-394-4111

February 23

Annual Outhouse Races and Chili Cook-off Contest, Nemo, SD, 605-578-2708

March 1-2

Mardi Gras Weekend, Main Street, Deadwood, SD, 605-578-1876

March 9-10

2019 Gun Show, American Legion Hall, Saturday 9 a.m. to 5 p.m., Sunday 9 a.m. to 3 p.m. MST, Philip, SD, 605-441-8466 or 605-441-1216

March 9-12

Summit League Basketball Championship, Sioux Falls, SD, 605-367-7288

March 15-16

28 Below Fatbike Race, Lead, SD, 605-584-3435

March 23

Annual Ag Day at the Washington Pavilion, Sioux Falls, SD, 605-367-6000

March 29-30, April 5-6

Annual Schmeckfest, Freeman, SD, 605-925-4237

April 5-6

Forks, Corks and Kegs Food, Wine and Beer Festival, Deadwood, SD, 605-578-1876

To have your event listed on this page, send complete information, including date, event, place and contact to your local electric cooperative. Include your name, address and daytime telephone number. Information must be submitted at least eight weeks prior to your event. Please call ahead to confirm date, time and location of event.