



A Touchstone Energy® Cooperative 

RENVILLE-SIBLEY
AUGUST 2021 VOL. 22 NO. 4

COOPERATIVE CONNECTIONS

In pursuit of Walleye

**SD anglers on the
prowl for Walleye**
Page 8

**Living the RV
lifestyle**
Page 12



Renville-Sibley Annual Meeting Manager's Report

The following is a recap of my presentation at the annual meeting.

Due to the ever-increasing size of utility equipment, we have outgrown our garage space and currently do not have room for all our vehicles in the heated shop. We marvel at our linemen's driving skills as they back the large trucks into spaces that, in some instances, have only a few inches of clearance from walls and other vehicles. You typically see our linemen out in the field. Still, they do maintenance on their trucks too, which is difficult given our space constraints, and it is difficult to load and unload material in such tight proximity.

Our storage and technology rooms are congested and lack proper climate control. The size of our lobby does not meet the privacy requirements set forth by the federal trade commission and we have uneven floors throughout the building. Multiple elevations present tripping and falling hazards for members, vendors, and employees. We have low headroom in areas employees routinely use, like the stairs leading down to the utility room, restroom, and storm shelter. As well as the area used for material and tool storage.

We are also challenged with issues due to the age of our building. Regulating the temperature throughout the building and the age of the sewer system are two of our primary concerns. We have leaks in several areas in the roof and issues with rust on door frames and siding.

Our pole yard is located at a different location, which

impacts our efficiency. We do not have adequate areas for employee and member parking and have traffic hazards with trucks entering and exiting the shop directly onto a main highway, often stopping traffic to back trailers into the shop.

We have been at this location 72 years. The original structure is 90 years old as it was initially constructed in 1931. For the first several years the Cooperative maintained its business office at three different locations in Fairfax. Many times, equipment and material were stored in rented garages or at employee's homes.

With approval by a vote of the membership, in August of 1948 the Cooperative headquarters were relocated to Danube. The Cooperative rented office and garage space in Danube on Main Street. In 1949 the cooperative purchased the Lueck Garage Building where we are still located today. Based on what we were able to find, from the time the building was purchased in 1949 it was remodeled at least 6 times.

In 1960 a brick front was built, the plate glass windows were removed and glass block was installed in their place. The inside office space was remodeled in 1973. In 1982 an additional 60 x 90 foot warehouse space was added to the east side of the building. Additional remodeling was done in 1991 that included purchasing property north of Danube where a second warehouse and pole yard was constructed. The inside office was remodeled again in 1999. A board room was added in 2002 by converting a portion of warehouse space.

The current location has served us well for over 70 years, but it can no longer meet the cooperative's needs. The board of directors made a diligent decision to move forward with a new facility.



DeeAnne Newville
CEO
320-826-2593 or
800-826-2593



In early 2017, a facilities committee was formed to include a cross-section of employees and two members of the board. Over a period of 3 years, we looked at a few possible solutions that spanned from fixing up our existing building without adding any additional space to building a new facility, and a few scenarios in between, providing enough information to determine the ideal direction moving forward.

(Continued on page 11)

COOPERATIVE CONNECTIONS

RENVILLE-SIBLEY CO-OP POWER

(USPS 019-074)

Board of Directors

Roger Manthei – Chair
Wayland Zaske – Vice Chair
Alan Neyers – Secretary/Treasurer
Gary Eekhoff
Matt Haubrich
Whitey Hinderman
Gary Peterson
Kylie Rieke
Helen Ruebel

Renville-Sibley Employees

Gene Alex – Line Superintendent
Brian Athmann – Journeyman Lineman
Shawn Beckler – Crew Chief
Mike Benson – Journeyman Lineman
Brad Braulick – Crew Chief
Nick Bruns – Systems Coordinator
Anthony Carruth – Journeyman Lineman
Amy Ervin – Consumer Accounts Representative
Brayden Fischer – Journeyman Lineman
Cindy Mertens – Administrative Services Manager
DeeAnne Newville – CEO
Clint Olson – Journeyman Lineman
Kathy Ridl – Office Assistant
Shane Suess – PT Janitor
Lenae Wordes – Communications Manager

RENVILLE-SIBLEY COOPERATIVE CONNECTIONS is published monthly by Renville-Sibley Co-op Power Association, 103 Oak Street, Danube, MN, 56230 for its members. Electric cooperative members devote 50 cents from their monthly electric payments for a subscription. Non-member subscriptions are available for \$6 annually. Periodicals Postage Paid at Danube Post Office, Danube, MN 56230 and at additional mailing offices. POSTMASTER: Send address changes to: Renville-Sibley Cooperative Connections, PO Box 68, Danube, MN 56230; Telephone (320) 826-2593; Toll Free 1-800-826-2593; Fax (320) 826-2679.

Web site: www.renville-sibley.coop

This institution is an equal opportunity provider and employer.

Stray voltage can cause livestock problems

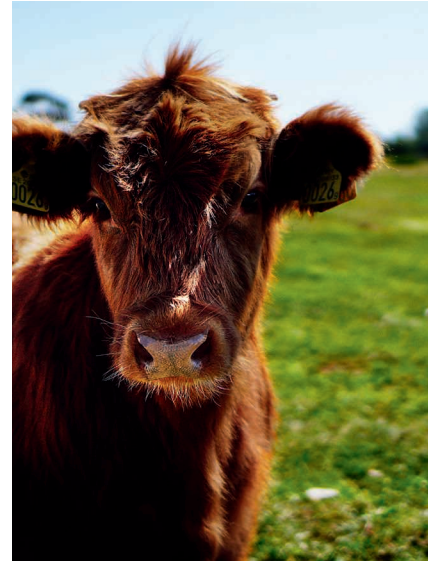
Stray voltage can cause serious problems in certain confinement livestock systems. Dairymen and hog producers can lose production from their livestock and experience health problems due to small electric voltages. These voltages are known by several names, including tingle voltage, neutral-to-earth voltage, neutral-to-ground voltage and nuisance voltage. They all refer to very low voltage between two animal contact points.

The cause of the voltage can be varied and complex. It may be caused by poor load balance, faulty wiring or equipment, improper grounding or a host of other electrical problems.

One common problem is that the farm operations grow in size, but the electrical service isn't upgraded to grow along with it. Also, electrical systems become obsolete and deteriorate due to improper maintenance.

It must be understood, however, that many factors other than stray voltage may cause behavior, health and production problems. A careful analysis of all possible causes is necessary if proper corrective procedures are to be found.

A special section of the National Electric Code deals with the special requirements for wiring all livestock buildings. If these are strictly followed and buildings are "up to code," the potential for stray voltage problems is greatly reduced. Many older barns have been converted from one use to another



and do not meet code requirements. If you are building new livestock facilities, be sure all work is done in accordance with Article 547 of the National Electric Code.

If stray voltage is suspected on your farm, contact Renville-Sibley Cooperative Power Association. An investigation will be made to determine if a problem is present. Your electrician is also requested to be present so any problems can be noted and corrected. In dairy operations, consulting your milking equipment dealer and local veterinarian is also recommended. They can determine if equipment problems or health problems that may or may not be related to stray voltage are present.

Thank You to Renville-Sibley Electric Co-op Power

I am writing to thank you for the Basin Electric Scholarship. I was excited to hear I was selected for this scholarship. I will be using it at North Dakota State University where I plan to study engineering. Thank you again for this generous scholarship and thank you for supporting the graduating seniors! Your work and generosity is greatly appreciated.

Sincerely – **Makayla Lagerwall**

Prepare to protect your devices from power surges

A power surge, or transient voltage, is a sudden and unwanted increase in voltage that can damage, degrade or destroy sensitive electronic equipment in your home or business.

The National Electrical Manufacturers Association estimates that 60–80 percent of power surges are created within a building, such as when large appliances, like air conditioners, turn on and off. Far less common are surges that originate from an electric utility during power grid switching. The most powerful surges can be caused by lightning.

A spike in voltage can be harmful to electrical devices in your home if the increase is above a device's intended operating voltage. This excess voltage can cause an arc of electrical current resulting in heat that damages electrical components. Repeated small-scale surges may slowly damage your electronic equipment and shorten its life span.

Surge Protection Options - Consider protecting your devices and appliances with surge protection. Several levels of protection are available to consumers.

Point-of-use surge protectors protect only the items that are directly plugged into the device. They do not suppress or arrest a surge but divert the

surge to ground. Use point-of-use surge protectors that have an indicator light or audible alarm that alerts you when the surge protector needs replacement.

Service entrance surge protection devices are mounted in or on your main electrical panel or at the base of the electric meter and provide protection for your entire electrical system. These devices cover components that cannot be connected to a point-of-use device, such as outlets and light switches.

Power strips do NOT provide surge protection. Be sure you are relying on the appropriate device for protection.

And remember, power strips and surge suppressors don't provide more power to a location, only more access to the same limited capacity of the circuit into which it is connected. Be careful not to overload the circuit.

Unfortunately, no surge protection device on the market can handle a direct lightning strike. The best way to gird against surges caused by storms is to unplug devices.

SUMMER MEMORIES

Send us your favorite summer photos!



As we approach the end of summer, *Cooperative Connections* would love to see your favorite memories of the season captured in pixels.

We're holding a photo contest called "Summer Memories." Send us your top shot and you could be eligible to win a \$50 gift card!

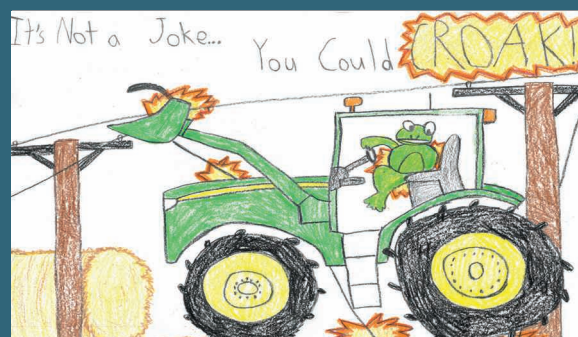
Here are the rules:

- One photo per entrant;
 - The deadline for entry is Aug. 27;
 - Finalist photos will appear in the October issue of *Cooperative Connections*;
 - Send your entry to editor@sdrea.coop.
- Good luck!

Hope Haven fundraising event Sept. 11

Hope Haven will hold a fundraising event on Sept. 11 at Talsma's Trail Park in Avon. The organization offers services and support for children, adults and families, including physical, mental, intellectual, residential, vocational and spiritual needs. For more information, visit www.hopehaven.org.

Hope Haven was misidentified in the July issue of *Cooperative Connections*.



It's not a joke...you could croak!

Creighton Werning, 4th Grade

Creighton is a fourth grade student at Parkston. He and his family live in Emery and are members of Southeastern Electric.

Kids, send your drawing with an electrical safety tip to your local electric cooperative (address found on Page 3). If your poster is published, you'll receive a prize. All entries must include your name, age, mailing address and the names of your parents. Colored drawings are encouraged.

PERFECT PASTA

PAPPARDELLE

Ingredients:

Salted water
3 tbsp olive oil
3 tbsp shallots, minced
2 cloves garlic, minced
1/4 tsp chili flakes
1 cup white wine
2 cups pappardelle noodles
3/4 cup vegetable stock
3 tbsp capers (optional)
2 vine-ripened tomatoes, sliced in wedges
1 handful baby kale
1 fresh lemon, juice only
2 tbsp butter (optional)
sea salt, to taste
fresh ground black pepper, to taste
1 handful fresh basil, torn

METHOD

Bring large pot of salted water to boil. In fry pan on medium-high heat, add olive oil and onions; saute 2 minutes. Lower heat slightly and add garlic and chili flakes. Saute on medium heat 2-3 minutes. Add white wine and deglaze pan. Cook 3 minutes. Remove from heat, keep warm until ready to add freshly cooked pasta. In pot of boiling water, add pappardelle. Cook according to instructions then drain. Place fry pan back on medium heat. Add drained pasta; vegetable stock; capers, if desired; tomatoes; baby kale; and lemon juice. Add butter, if desired, toss well. Cook 2-3 minutes, tossing occasionally, and season with salt and pepper, to taste, and basil. Toss again, remove from heat and serve.

Rouxbe.com

SUMMER GARDEN PASTA SALAD

1 # thin spaghetti, broken into 1" pieces
1 pint cherry tomatoes, halved
2 zucchinis, peeled & diced
2 cucumbers, diced
1 green pepper, diced
1 red pepper, diced
1 (16 oz.) can sliced black olives, drained

Dressing:

1 (16 oz.) bottle Italian dressing
1/4 c parmesan cheese
1 T sesame seeds
1 tsp paprika
1/2 tsp celery seed
1/2 tsp garlic salt

METHOD

Cook pasta and drain. Drizzle with small amount of olive oil to prevent sticking and stir to combine. Combine pasta with veggies and black olives. Whisk dressing ingredients together. Pour over salad ingredients and toss until coated. Cover and refrigerate 3 hours or overnight.

Jane Ham, Rapid City

PIZZA NOODLE HOT DISH

Ingredients:

1 lb. ground beef, browned and drained
1/2 c. chopped onion
1 jar pizza sauce
Salt and pepper to taste
3 c. noodles, cooked and drained
1 jar spaghetti sauce
1 pkg. pepperoni slices
Mozzarella cheese for top

METHOD

Mix ingredients together and put in a greased 9 x 13 pan. Bake at 350° for 20 minutes. Sprinkle 8 oz. of mozzarella cheese on top and place back in oven to melt.

JOAN ANTONEN, ARLINGTON

SPAGHETTI PIZZA

Ingredients:

1/2 lb spaghetti
4 eggs
1 c. milk
Salt & pepper
7 oz. pepperoni
1/2 lb hamburger
1/2 lb pork sausage
1 onion
1 lg jar spaghetti sauce
2 c. mozzarella cheese

METHOD

Cook spaghetti, drain, and put in the bottom of a 9x13 casserole dish. Mix eggs, milk, salt, and pepper to taste and pour over noodles. Spread pepperoni over the above. Brown hamburger, sausage, and onion and put over pepperoni. Pour spaghetti sauce over all. Sprinkle mozzarella on top. Bake at 350° for 45 min.

Ruth Morman, Volin

Please send your favorite dairy recipes to your local electric cooperative (address found on Page 3). Each recipe printed will be entered into a drawing for a prize in December 2021. All entries must include your name, mailing address, phone number and cooperative name.

Renville-Sibley Holds Annual Meeting

Renville-Sibley's 83rd annual meeting was held on Thursday, June 24th at the Island Ballroom in Bird Island. Drawings for early bird prizes were held at 5:45 pm. Board chairman Roger Manthei presided over the meeting. Gary Eekhoff gave the invocation. Alan Neyers read the notice of the meeting and gave the financial report.

CEO DeeAnne Newville gave an update on the new facility project. The information shared can be found in DeeAnne's article on pages 2, 11 and 14. Information on the district elections was presented by Whitey Hinderman.

Matt Haubrich and Gary Peterson

presented the scholarship awards. This year, there were a total of 7 applications received. Back in February, the committee made the decision to award a \$1,000 scholarship to all applicants. The winners are as follows:

Basin Electric Scholarship – Makayla Lagerwall

Renville-Sibley Scholarship (funded from the general fund) – Abby Mulder

Renville-Sibley Scholarships (funded from unclaimed capital credit checks):

Ashley Frank

Kamren Freitag

Madyson Herdina

Harlie Rubischko

Whitney Wordes

Roger Manthei announced the results of the elections. They are as follows:

District 1 – Alan Neyers, District 2 – Helen Ruebel and District 3 – Gary Peterson. Roger thanked the Athmann family for hosting Renville-Sibley's annual meeting at the Island Ballroom since 1986. Two representatives of the family came forward to accept a bouquet of flowers as a thank you gift from the cooperative. Drawings were held for the remaining prizes before the meal was served. Thanks to all who attended Renville-Sibley's 83rd annual meeting.

Annual Meeting prize winners announced

Prize winners were as follows: (* = children's gifts)

\$25 Energy Gift Certificate Shirley Allen
UltraSonic Pest Repellers Dan Kaufenberg
*Mega Paint Chalk Markers Amara Kaufenberg
\$25 Energy Gift Certificate Gens Farm Acct/Darrell Gens
20-piece Standard Bungee Cords Dale Kiecker
Collapsible Cooler Joel Bakker
\$25 Energy Gift Certificate Ramona Warner
\$25 Target Gift Card Mike/Rebecca Lagerwall
\$25 Energy Gift Certificate Don Schroeder
16" Oscillating Stand Fan Harvey Mathiowetz
\$25 Energy Gift Certificate Christopher Lee
Microfiber Mop Barb Woltjer
\$25 Cenex gift card Gilbert Borth
\$25 Energy Gift Certificate Tom Breikreutz
Power Cord Holder Jeff Sindelir
\$25 Energy Gift Certificate Connie Mulder
Dirt Devil cordless cleaner Norb Serbus
\$25 Energy Gift Certificate James Lippert
Perfect Egg Maker Robert Fredrickson
*Backyard Sport Fishing Brenden Lee
\$25 Energy Gift Certificate Russ Nere
\$25 Cenex gift card Gary Simondet
Bostitch reverse squeeze staple gun Jim Peterson
\$25 Target Gift Card Mike Bratsch
Lawn Darts Set Steve/Pam Benson

\$25 Energy Gift Certificate Stan Prokosch
Motion Activated light control Roger Freitag
*Slip'n Slide Maya Rieke
\$25 Cenex gift card Leon Greenslit
\$25 Energy Gift Certificate Danelle Borth
31-piece tool set Eiler Farms, Ronald/Nancy Eiler
\$25 Energy Gift Certificate Bernard Kohout Trust
Finch feeder Larry Brown
*Inflatable Easel Avery Rieke
\$25 Energy Gift Certificate Butch Buschette
\$25 Cenex gift card Jerome Kiecker
Twin dispensers with stand James Kosak
\$25 Energy Gift Certificate Dave Lang
*Kick Croquet Anika Lee
\$25 Energy Gift Certificate Dale Frank
LED Rechargeable Work Light Tom Rau
\$25 Target Gift Card David/Deb Pastoors
Garment Bag – ER gift Mike/Becky Jaenisch

Coloring contest winners were as follows:

0 – 4 years old: no entries

5 – 8 years old: Maya Rieke

9 – 12 years old: Anabel Kaufenberg

The winners received a \$10 Dairy Queen gift card.

Renville-Sibley holds Scholar of the Year Banquet

By Lenae Wordes

The 6th annual Renville-Sibley Co-op Power Touchstone Energy Scholar of the Year banquet was held on Thursday, June 17 at the Danube Community Center. The event honored the eight high school seniors who were selected as the Scholar of the Month throughout the 2020-21 school year.

As a Touchstone Energy Cooperative, Renville-Sibley Co-op Power is founded on the four pillars of Integrity, Accountability, Innovation and a Commitment to Community. Based on these principles, Renville-Sibley Co-op Power sponsors the Scholar of the Month program to recognize those high school students who also share these same values. 614400

Each month, teachers from the local school districts nominate a high school senior from their school who demonstrates outstanding academic, school and community achievements. By random drawing, one name is selected each month from those names submitted. The selected student is awarded a \$100 donation to be given to the student's school on their behalf. The student chooses which program the donation should be given to at



The following scholars attended the Scholar of the Year banquet (l-r): Jaden Kolker (RCW), Aidan Cavanaugh (Cedar Mountain), Brandon Bentley (RCW), Abby Mulder (CMCS), Haley Rhode (MACCRAY), Grace Macht (MACCRAY). Missing: Kassandra Piceno (RCW) and Payton Chan (RCW).

their school (music, sports, arts, etc.). The monthly winners were featured on their local radio station (KLGR, KOLV or KNUJ), an ad placed in their local newspaper as well as Renville-Sibley's newsletter, Cooperative Connections.

Schools invited to participate in the program include Renville County West, MACCRAY, Central Minnesota Christian School, BOLD, Redwood Valley, Cedar Mountain, and GFW.

All Scholars of the Month, their family and the teacher who made the nomination were invited to attend the

Scholar of the Year banquet. Brandon Bentley was selected, by random drawing, as the Scholar of the Year and the winner of a \$1,000 scholarship from Renville-Sibley.

Renville-Sibley member Blair Anderson was the guest speaker at the banquet. Among other words of inspiration, Blair encouraged the students be the best person they can be and wished them the best in their future.

Renville-Sibley will continue this program in the 2021-2022 school year.

Comparative Report

	Current YTD through May 31, 2021	One Year Ago YTD through May 31, 2020	10 Years Ago YTD through May 31, 2011
average # of Consumers	1,882	1,882	1,927
kWhs purchased	88,077,668	75,713,246	77,478,150
Cost of purchased power	\$5,702,884.28	\$4,740,875.19	\$3,463,583.08

Stay safe during social distancing by calling 811 before starting any new project, so you can stay connected to the internet and utility services you rely on.

Call 811 or go to your state 811 center's website before digging.



Call 811.com/811-your-state

In hot pursuit of Walleye

SD anglers pursue walleye for fun and charity

Billy Gibson

billy.gibson@sdrea.coop

Walleye fishing isn't always all about fishing for walleye.

That was the case at the annual SDREC Employee and Vendor Walleye Fishing Tournament held earlier this summer at the Cow Creek Recreation Area north of Pierre. For most of the more than 100 walleye whisperers who participated, the event was mostly about hanging out together, swapping fish tales - some of them true - and catching up with one another.

The tournament also raised \$500 for the state's rural electric cooperative Line Patrol charity.

For Evan Buckmiller, general manager at Kingsbury Electric Cooperative in DeSmet, the tournament presented a prime opportunity to spend time with family and interact with his cooperative colleagues. While his team failed to place, he enjoyed being out on the water with his wife and dad.

"It was a little hot, but we had beautiful weather and caught a lot of fish...just not as many as we wanted," said Buckmiller. "I'd never been a part of this event, so it was fun seeing all the boats taking off at the same time. It was also good to see people you don't normally get to see, or you haven't seen since you worked a storm together years ago. You get to connect with your friends and linemen you went to school with. That's the fun part about events like this."

Roger Crom, former manager of loss control services at the South Dakota Rural Electric Association in Pierre, served as a volunteer to help coordinate the event. Crom said while he likes to fish, he takes satisfaction with staying on dry land and meeting the competitors as they come in to weigh their catch and tell of their exploits on the lake.

Aydan Johnson landed this Walleye on his 12th birthday at Cow Creek north of Pierre. Photos by Billy Gibson



The dawning of a new summer day brings the promise of fun and a full string of walleye by the afternoon.

“I just enjoy being a part of it every year,” Crom said. “It’s a lot of fun getting together with old friends and meeting new friends and getting to know the young linemen that are now part of the program. It’s not just one or two co-ops, it’s like a big family that comes out year after year. There’s a lot of camaraderie. Everybody works together and we also have a lot of fun together.”

For the record, the winning team of Roger Squires, Ryan Squires and Ron Koosman took top honors, despite temperatures soaring into the 90s and water levels that were unusually low. The crew representing H-D Electric and Dueco prevailed over a field of more than 30 teams with a total weight of 18.03 lbs. Their largest walleye weighed in at 3.05 lbs.

The East River Electric team of Tim Dockendorf, Doug Engbrecht

and Robert Hanson landed the largest walleye at 4.04 lbs. (Search YouTube for Cooperative Connections Plus to see a video of the event.)

It’s no secret that the Missouri River system boasts some of the best walleye fishing in North America and is one of the top walleye habitats on the continent.

While there are many other walleye fishing tournaments held throughout the state in the spring and fall, one that stands out is the Tom and Matt Hill Memorial Tournament.

The fifth annual event, set for July 31 at the West Whitlock Recreation Area near Gettysburg, is held each year in honor of the Hill brothers who died in a boating accident on Brush Lake in December of 2016.

Born and reared in Volga, the siblings were avid hunters and fishermen. They were finishing up a day of duck hunting and were heading back to the landing to meet their father when their boat suddenly capsized.

The tournament is held to raise funds to support local youth outdoor programs in honor of the brothers. Proceeds have gone toward purchasing safety hunting vests for youngsters, hunting gear and safety training.

Sheila Gross, Energy Services Specialist at Sioux Valley Energy in

It’s no secret that the Missouri River system boasts some of the best walleye fishing in North America.

Colman, lost her brother and great-nephew in a fishing accident in January. As word spread, friends and family of the Hill Memorial Tournament and Fishing 4 Miracles jumped into action with an outpouring of support to the Berwald family. To express their gratitude, several of Gross’ family members plan to participate in the tournament to help contribute to the safe enjoyment of fishing and hunting.

“The Hill Brothers Committee is an amazing group of people and they do so much to support the community and those who have been impacted by tragedy. They have blessed my family in our time of loss and have brought great comfort,” she said.

A rules meeting will take place on Friday, July 30, at the Whitlock Bay Supper Club. An open house will be held from 1-5 p.m. with a meal from 3 p.m. to 5 p.m.



Crew members of the Captain Crawdaddy prepare to launch at Cow Creek.

June board meeting highlights

The June board meeting was held on Monday, June 21 at 8 a.m. All board members were present. Others present were CEO DeeAnne Newville, Cindy Mertens and Lenae Wordes.

Also in attendance was Ryan Breitbach (via Zoom) and Cierra Baumgartner.

The board reviewed and approved the following items:

- Minutes of the May 24 board meeting
- Operating and disbursement reports for the month of May
- Capital credits to an estate
- Safety report for June
- CFC Cooperative System Integrity Fund
- East River Annual Meeting Voting Delegates
- Allocation of 2020 Margin
- New facility project out on bid
- Franklin Nursing Home project through REED fund

The board reviewed:

- Total new cooperative members and

capital credits transferred

- Reports from staff members as to the activities in their department. Items in the reports include:

- High-level Statement of Operations review – YTD through May (unaudited)
- Organization activities
- Facilities update
- East River update
- Basin Electric update
- NRECA update
- MREA update
- Linecrew work in progress, equipment update, and outage update
- Accounts receivable
- Annual meeting
- Scholar of the Year banquet
- Logo redesign

Please contact the Renville-Sibley office if you would like more information regarding the board meeting.

NOTICE:

The July board meeting will be held on July 26 at 8 a.m. The August board meeting will be held on August 30 at 8 a.m.

FREE Want Ad Service

Members can submit ads for the following categories: Giveaway, For Sale, For Rent and Wanted. Ads should be, or are limited to, no more than 15 words and must be received by the first of the month to be included in the following month's newsletter. Renville-Sibley reserves the right to edit content or exclude ads due to space restrictions. Ads will be run one time only unless resubmitted. Please complete the following information and mail to the Renville-Sibley Cooperative Power, P.O. Box 68, Danube, MN 56230.

Name: _____

Address: _____

Phone number: _____

Ad to be placed (limit of 15 words per ad)

Type of ad: ☐ Giveaway ☐ For Sale ☐ For Rent ☐ Wanted

WHERE'S THE NUMBER?

Last month Barb Tighe did not find her member number in the newsletter. The credit will increase to a value of \$45. Another number has been hidden in this newsletter. If you find your number and call the office by the 2nd of August, you will receive this credit on your electric statement. Good luck in your search!

OUTAGE REPORT

Outage Report – affecting 10 members or more

Date: 05-18-21

Time off: 9:00 a.m.

Time on: 10:22 a.m.

Substation: Birch Cooley

Cause: scheduled

Please contact Renville-Sibley's office for more details about these power outages.

FOR SALE

- 40 ft Damon Motor Home, six slides, 65,000 miles, new rubber, 360 hp

Leon Greenslit, Olivia, MN

320-522-1685

- 2 bottom Oliver plow, ground lift, all steel, \$150

Stanley Dworshak

Redwood Falls, MN 56283

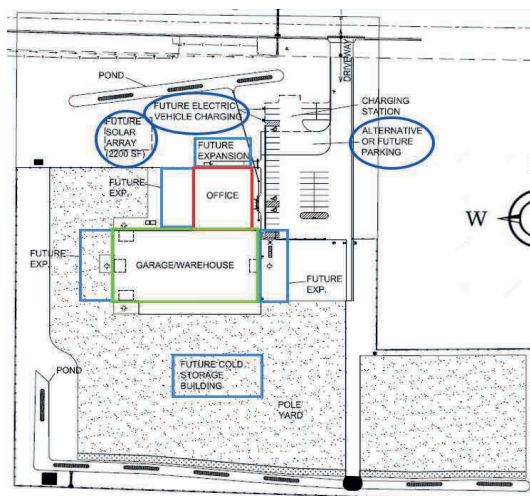
507-640-0857

Annual Meeting Manager's Report

(Continued from page 2)

A facility assessment program was created by Engan Associates Architects to provide estimated costs for all options reviewed. We presented the information to the board at their February 2020 strategic session where they determined we would build a new facility. Buying land and erecting a new Precast concrete building, which is the typical structure for a utility, was expected to cost close to \$7.2 million dollars. Breitbach Construction provided an estimate to build the same building using engineered steel for approximately \$5.3 million dollars. Based on a more in-depth design process with consideration for current material costs, the committee was given a conservative budget of \$5.1 million for the project.

In March of 2020, the board formally approved the new facility project. We teamed up with Breitbach Construction, as our general contractor and Engan Associates Architects for a project design process that spanned from June of 2020 until May of 2021 (see rendering below). We will put the project out for bid before the end of June with a public bid opening scheduled for July 13th (*Update, the bid opening has been moved to July 27.*) We will break ground between August and May depending on material lead times with the goal of moving into our new building in the first half of 2023.



We worked with the City of Danube on a tax abatement plan valued at close to \$646,000 dollars and are in the process of trying to secure a grant to offset the cost of an inclement weather shelter. We have also sought out grant opportunities for electric vehicle charging through the VW settlement fund and the MN dept of Transportation. We were hoping, due to the pandemic, some shovel ready stimulus grants would emerge but are not aware of any to date.

We work hard to keep rates affordable for our members, and there was much conversation about building a new facility without impacting rates. But the reality is every penny we spend comes from our member rates as that is our sole source of revenue. We hope to avoid a rate increase for as long as possible, in part, by utilizing our revenue deferral account. We currently have \$1,684,000 in the deferral and plan to bring in \$210,500, per year, over a period of 8 years.

We purchased a 10-acre plot of land on the south side of Highway 212, adjacent to Grizzly Supply in Danube. Renville-Sibley's facilities committee and board explored various sites before settling on this parcel. We will serve our own electric load at this location.

We believe the design is practical yet provides some modest expansion options for growth and additional services in the future. I am so impressed with how creative the team was to meet our current needs while considering future possibilities within a conservative budget. The diagram below/ left shows the entire building laid out on the 10-acre parcel. The garage/warehouse is outlined in green and the office is outlined in red. The pole yard will be to the south of the building.

All the areas outlined with blue rectangles represent designated expansion locations for the future. The areas circled in blue to the north are earmarked for future parking lot space, electric vehicle charging and a solar array, to be installed when the time is right.

The new garage and warehouse is designed with a nice, open, drive through plan. Vehicles will enter

(Continued on page 14)

MISSION STATEMENT

Renville-Sibley Cooperative Power Association will provide efficient, reliable electric energy and services to enhance the quality of rural living.

PLANNING A CHANGE IN SERVICE?

Renville-Sibley encourages any member planning on making changes to their service in 2021 to please contact our office as soon as possible. To complete these projects on time, material may need to be ordered well in advance as often there is an extended lead time to get the appropriate material. In addition, crew time will be scheduled in the order projects and materials are received.



RV TRIPPING

RV campers make new friends and enjoy new experiences on the open road. *Photo by South Dakota Travel*

Vic and Barb Simmons adopt the RV lifestyle when visiting new places and creating lasting memories on the road

Billy Gibson

billy.gibson@sdrea.coop

Decisions, decisions...

When Vic Simmons starts to sense the allure of the open road, he has some decisions to make. He can crank up his Jeep Cherokee and join all the brand loyalists out there who rally around the phrase, "It's a Jeep thing: You wouldn't understand."

Or he could go grab his gloves and his riding gear, fire up his orange 2017 Harley-Davidson Street Glide and experience the wind rush and beauty of the natural landscape on two wheels. Or he can climb into the command-and-control center of his massive 40-foot Meridian "diesel pusher" motor coach.

But who wants to be burdened by making tough decisions when the highway is calling? Most of the time he makes it a little easier by attaching the bike or the Jeep and

heading out into the great wide open.

Simmons, who just turned 65, serves as general manager of Rushmore Electric in Rapid City. But he has plans of retiring early next year and that means lots of travel time in the future with his wife Barb and whoever else wants to join the adventure.

The passenger list usually includes a host of grandchildren as it has from the beginning of Simmons' foray into the world of recreational vehicles and RV life.

He and Barb invested in their first RV about 12 years ago by purchasing a pre-owned 32-foot Class C model Jamboree, the kind that's built on a truck chassis and resembles a van with a large camper shell and a sleeping chamber over the roof.

"When our three girls were little, Barb's parents used to take them

camping, and to this day they always talk about how much they enjoyed those trips," Simmons said. "So, when it came time for us to have grandkids, we wanted to have a way to create those same kinds of memories for our own grandchildren."

Inevitably, as the family grew the smaller that 32-foot camper became. Besides, the vehicle was a bit top-heavy and caused some white-knuckle driving in high winds, and according to Vic, "Barb's idea of roughing it is staying at a hotel without a swimming pool." So, after three summers an upgrade with more space and more amenities was in order, and Simmons graduated to a 37-foot motor coach.

After a few years, he sold that RV to Lacreek General Manager Josh Fanning, who used it for family vacations and to take his daughter to weightlifting and track competitions in far-flung places.

Soon afterwards, Vic and Barb acquired their "forever RV," a 40-foot Meridian they purchased



Vic Simmons of Rushmore Electric enjoys climbing behind the wheel and piloting his 40-foot recreational vehicle.

a few years ago when Vic began planning out his retirement.

Simmons, who prides himself on always buying pre-owned vehicles, purchased the RV sight-unseen... well almost.

"I found it at a dealership in Lincoln," he recalled. "It had 17,000 miles on it and looked like it was in good shape. My son-in-law was in Lincoln, so he went to the dealership and Facetimed me and walked through it and it looked nice. It was set up to pull the Jeep or the trailer for the motorcycle, so we got it. I don't usually do business like that, but..."

With Vic soon retiring and Barb already retired from her



Vic and Barb Simmons use their RV to visit new places and create lasting memories.

job as the pharmacy technician program director at Western Dakota Technical Institute, the two have lots of traveling plans in their future.

One hitch, however, is finding places to park. RV sales shot through the roof nationally last year as people sought to escape the confines of their homes under lock down conditions and explore the outdoors.

"You can hardly find any good camping spots," Simmons said. "Camping just became something that people felt safe doing, and it got them out of their homes. A neighbor of mine had a travel trailer for sale and it sold in just a few minutes after he posted it."

Simmons said his travel adventures have taken him from North Carolina on the eastern seaboard to Washington state on the Pacific, and also all the way down to El Paso.

His plan is to "go to places I haven't been," although when asked if there's one place he would like to re-visit he's quick with an answer.

"Door County in eastern Wisconsin. I just fell in love with the place," he said. "It's on the peninsula above Green Bay and is just gorgeous

'GREAT 8' UNIQUE RV CAMPGROUNDS IN SD

Here are the state's top eight unique campgrounds, according to the state Department of Tourism:

Wessington Springs City Park Campground

Wessington Springs

Castlewood City Park Municipal Campground

Castlewood

Lake Carthage Campground

Carthage

Custer's Gulch RV Park

Custer

Cedar Pass Campground

Badlands National Park

Rafter J Bar Ranch

Hill City

Fish 'N Fry Campground & RV Park

Deadwood

Rocky Point Recreation Area

Belle Fourche

with a beautiful campground and a friendly community and shops and restaurants on Sturgeon Bay. The sunrises and sunsets are awesome."

His plans for himself and Barb are the same he had for his grandchildren when he invested in his first RV: meet new people, explore new places and make lasting memories.

Oddly enough, many of those new people are encountered not at state parks, camp sites or in restaurants, but at the fuel pump.

"When you're driving a car and stop for gas, nobody will come up and talk to you," he said. "But if you're on a motorcycle or in an RV, it's amazing how many people want to come up and talk to you all the time about where you're going and where you've been. They also like to talk a lot about gas mileage."

Renville-Sibley Annual Meeting Manager's Report

(Continued from page 11)

from the east and exit to the west. The West side of the building has both a repair and wash bay that will be unencumbered by parked vehicles. The NE corner of the building has been designated for material storage, metering supplies, lockers and a mud room, with doors entering into the office to the north.

Members will enter the office from the East into a lobby area. Outlined in purple, you will see a precast concrete section at the center of the building to house computer equipment and member records as well as a F4 FEMA tornado shelter that will double as a conference room. The boardroom was placed adjacent to the board foyer with a removable wall between, identified in yellow, that will allow us to open up the area for member informational meetings, the annual cooperative holiday open house and to serve as an open sleeping area in our inclement weather shelter that I will describe further down in this article.

There is an additional entrance on the north side of the building that enters into the kitchen area and will serve as our Inclement Weather entrance (see diagram below). We have designed a small portion of the office in the southeast corner for employee growth with a small conference room and a library that can be converted to future office space along with an open area designed to hold 4 cubicles.

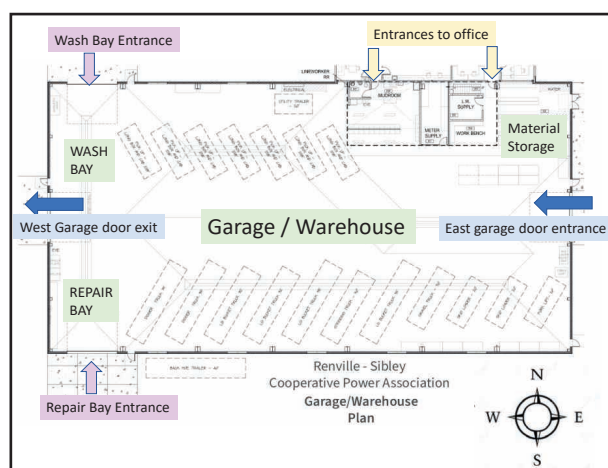
As I mentioned earlier, we are working with the City of Danube to apply for a FEMA grant that will help cover a portion of our building to be used as a storm shelter during inclement weather. Local law enforcement will have a code to enter our building from the north into the kitchen area. When they enter their access codes, doors will close and lock, securing the remainder of the building from the shelter area. The removable wall will be opened allowing the boardroom to be converted to a sleeping area. The board tables and chairs can be wheeled into the storage area between the boardroom and the kitchen. There is another storage area in the northeast corner of the building for cots, blankets, pillows and towels.

Travelers or area residents without storm shelters will have access to the kitchen, 3 bathrooms, 2 of which are equipped with showers, a quiet room that can be used by nursing mothers and an F4 FEMA rated tornado shelter.

The decision by the board of directors to move forward with a new facility was not

taken lightly, and the leadership they showed during the process was impressive. The effect on rates was foremost on their minds as well as the minds of the leadership team. We value the trust the membership has placed in us to make sound decisions to serve Renville-Sibley members.

I would like to thank our employees and board members who served on the facilities committee along with Ryan Breitbach from

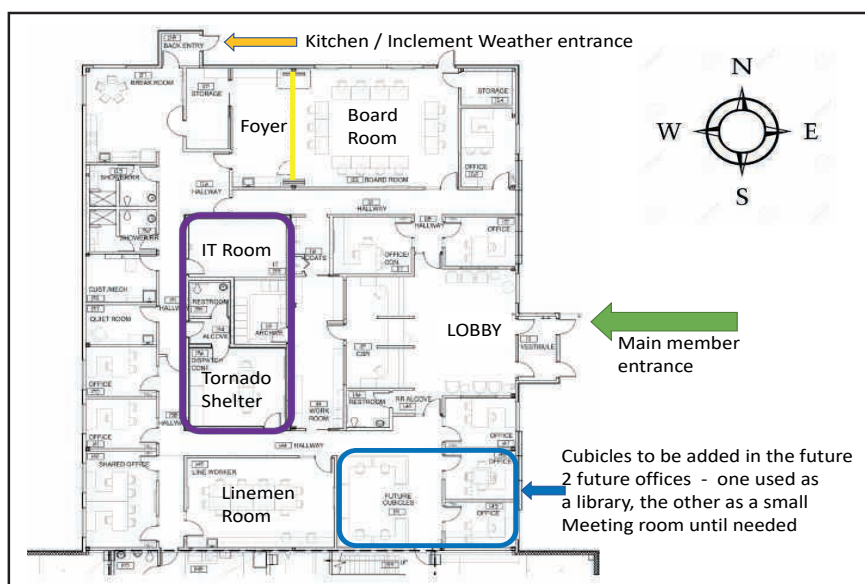


Breitbach Construction and our Renville-Sibley Member, Barbara Marks and Richard Engan both from Eagan Associates for their hard work and careful planning on this project.

I am proud of all our employees and appreciate their dedication to you, our members. They are the ones who bring you safe and reliable electricity, answer your questions, maintain your data and make sure we meet all our state and federal mandates. I am honored to work with such an amazing group of individuals and I am thankful for the opportunity I have been given to be a part of your cooperative.

On behalf of our Board of Directors, leadership team, and employees, I would like to thank you for your patronage and support.

Note: Renderings of the new facility and the layout are available in our office for members to view.



**Visit Renville Sibley Co-op Power, along with other
Touchstone Energy Cooperatives, at Farmfest 2021
and enter for a chance to win a grand prize!**

FARMFEST 2021 • AUGUST 3 - 5 • REDWOOD FALLS, MN

Bring this coupon to Booth #2301.

NAME: _____

ADDRESS: _____

PHONE: _____

EMAIL ADDRESS: _____

You must be a member of one of the participating electric cooperatives to win.



August member events

Be Sure to Visit Us at the Farmfest and Family-a-Fair events

It is exciting to once again be able to offer activities for our members. In August, members have the opportunity to attend Farmfest and the Family-a-Fair night. Be sure to mark your calendar so you don't miss these two great activities.

Farmfest is a great outdoor event for farmers and anyone interested in agriculture. This event will be held on Aug. 3-5 at the beautiful Gilfillan Estate near Morgan, MN. Renville-Sibley, along with other electric co-ops in southern Minnesota, have joined together in this booth.

We are located at Booth 2301 in the large ag tent. Remember to bring the above coupon with you. With this coupon you will be entered into a drawing for a chance to win one of the yard tools shown above. You must bring the coupon to be entered into the drawing. No coupons will be available at the booth if



you forget to bring the coupon. Below is a picture of the prizes that are available to win at Farmfest 2021.

Family-a-Fair night - Renville-Sibley is pleased to continue our Family-a-Fair Night tradition of inviting members to attend the Renville County Fair compliments of the cooperative. This great event brings families and neighbors together to enjoy all the fun fair activities.

Cooperative members (up to 4 family members) are invited to attend the Renville County Fair FREE on THURSDAY, AUG. 12. Members will receive a post card in the mail the week of July 26th. This post card entitles up to 4 family members FREE entrance into the fair. Post cards should be brought to the west gate of the Renville County Fair on Thursday, Aug. 12 between the hours of 3:00 p.m. and 7:00 p.m. Renville-Sibley representatives will be located just outside the west fence to assist you.

The post card will be used to enter members into a drawing for an energy gift certificate. Children will have the opportunity to submit their name for a prize drawing as well.

If you have any questions about these two great events, be sure to give us a call at 800-826-2593 or 826-2593.

REGISTER TO WIN!

Bring this coupon and mailing label to the Touchstone Energy® Cooperatives booth at Dakotafest or the South Dakota State Fair to win a prize!

Your Phone Number: _____
Your E-mail Address: _____

August 26-29
58th Annual Steam
Threshing Jamboree
Photo by Travel South Dakota



To have your event listed on this page, send complete information, including date, event, place and contact to your local electric cooperative. Include your name, address and daytime telephone number. Information must be submitted at least eight weeks prior to your event. Please call ahead to confirm date, time and location of event.

JULY 23-25
Arlington Days
Various Locations, Arlington, SD, 605-983-5251

JULY 27-31
Days of '76 Rodeo & Parades
Various Locations, Deadwood, SD, 605-578-1876

JULY 29-AUGUST 1
Bruce Honey Days
City-wide, Bruce, SD, 605-627-5671

JULY 29, AUGUST 5, 19
The 1880 Train Old West Shootout
222 Railroad Avenue, Hill City, SD, 605-574-2222

JULY 31
Chislis Festival
Freeman's Prairie Arboretum, Freeman, SD, 605-496-9946

AUGUST 5-7
90th Anniversary Union County Fair
The Fairgrounds, Alcester, SD, 605-356-2321

AUGUST 5-14
Sioux Empire Fair
W.H. Lyon Fairgrounds, Sioux Falls, SD, 605-367-7178

AUGUST 6-7
Huron Senior Games
Various Locations, Huron, SD, 605-491-0635 or 605-353-8533

AUGUST 6-7
Potato Days
Citywide, Clark, SD, 605-360-7672

AUGUST 6-8
Annual Sioux River Folk Festival
Newton Hills State Park, Canton, SD, 605-261-7414

AUGUST 8
30th Annual Czech Heritage Festival
Bechyn, MN, 320-522-1218

AUGUST 11
Willie Nelson & Family
824 32nd Avenue, Brookings, SD, 605-692-7539

AUGUST 12-15
Annual Custer County Fair
Custer County Fairgrounds, Hermosa, SD, 605-255-4145 or 605-393-7055

AUGUST 13-15
Fort Pierre Trader Days & Backyard BBQ Competition
Various Locations, Fort Pierre, SD, 605-223-7603

AUGUST 17-19
Dakotafest
2300 E Spruce Street, Mitchell, SD, 877-611-8161

AUGUST 20-22
Yankton Riverboat Days
City-wide, Yankton, SD, 605-665-1657

AUGUST 20-29
Central States Fair & Rodeo
800 San Francisco Street, Rapid City, SD, 605-355-3861

AUGUST 21
Dakota State Fair Speedway Stock Car Races
South Dakota State Fairgrounds, Huron, SD, 605-352-4848

AUGUST 25-29
Corn Palace Festival
604 N Main Street, Mitchell, SD, 605-995-8430

AUGUST 26-29
58th Annual Steam Threshing Jamboree
Prairie Village, Madison, SD, 605-256-3644

SEPTEMBER 11-12
Fall Harvest Festival
Delmont, SD, 605-928-3792

Note: Please make sure to call ahead to verify the event is still being held.