

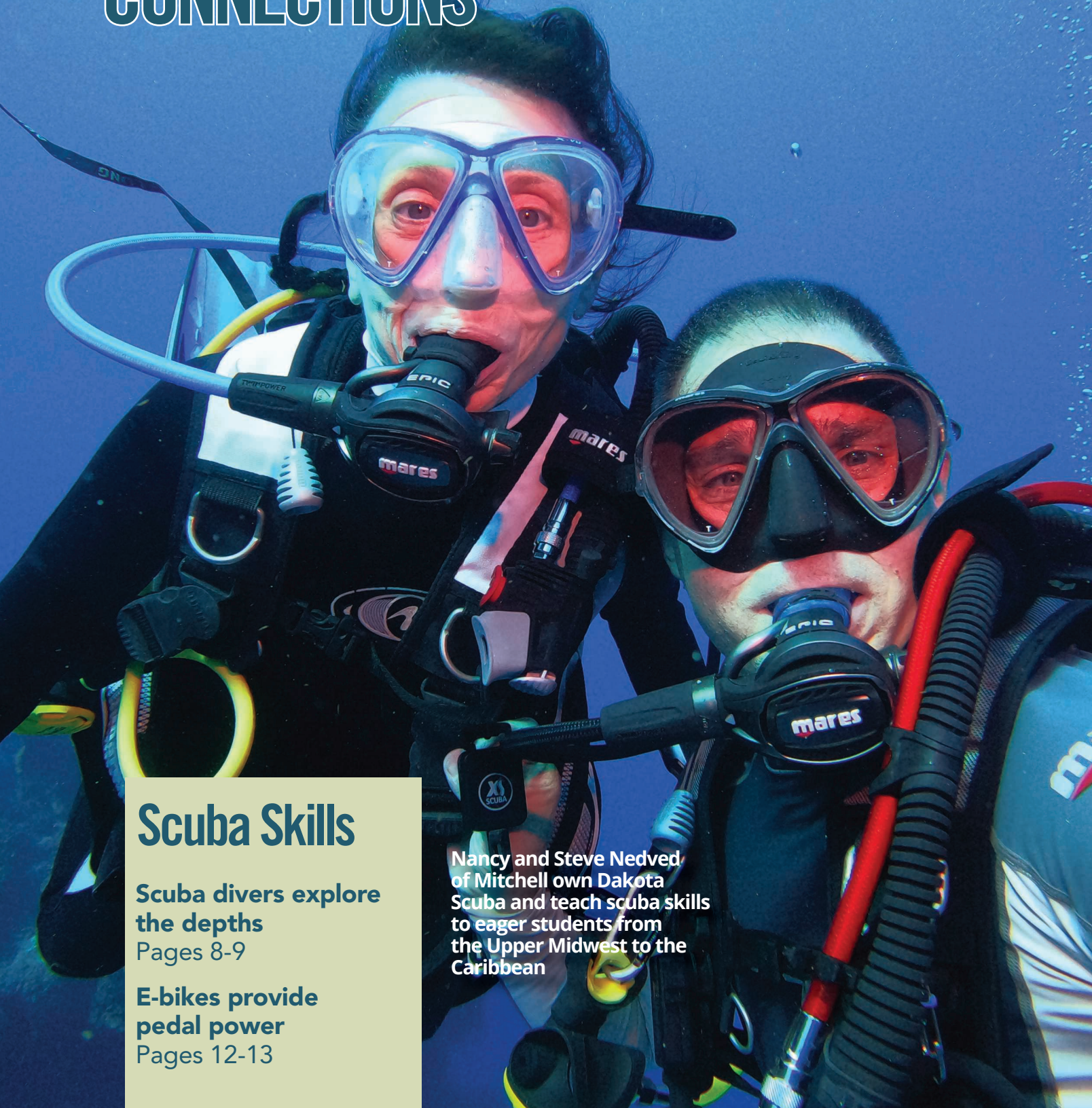


A Touchstone Energy® Cooperative



RENVILLE-SIBLEY
JUNE 2022 VOL. 23 NO. 2

COOPERATIVE CONNECTIONS



Scuba Skills

**Scuba divers explore
the depths**
Pages 8-9

**E-bikes provide
pedal power**
Pages 12-13

Nancy and Steve Nedved
of Mitchell own Dakota
Scuba and teach scuba skills
to eager students from
the Upper Midwest to the
Caribbean

Board approves budget with steady rates; new facility plans discussed

The following information is a recap of my presentation at the annual meeting.



DeeAnne Newville
CEO
320-826-2593 or
800-826-2593

After the Board Secretary/Treasurer, Alan Neyers, delivered the news that the Renville Sibley board of directors took action to approve the 2022 budget which holds rates steady, I provided a condensed version of my presentation from the member informational meetings that were held in February.

Since their strategic session in 2007, the board of directors have wrestled with the best time to build a much-needed new facility. A committee was formed at that time to investigate options. For various reasons, the project was tabled in 2008. In 2015 the board reestablished a committee with both directors and employees to look into several options. The board formally approved building a new facility in March of 2020. The design was complete by May of 2021, put out for bid, redesigned, and put out for bid again. Bids were awarded earlier this year. Earthwork will begin in June, and we hope to be moved into the new facility by July of 2023.

In 2018, Engan Associates Architects provided an estimated cost of \$7.2 million dollars for a new precast concrete building. Breitbach Construction provided an estimate to build the same building using engineered metal for \$5.3 million dollars. The board elected to move forward with an engineered metal design.

Due to the impact of the pandemic on labor and materials, our July bid opening resulted in a \$7.2 million dollar project for an engineered metal facility. Our board of directors rejected all bids.

We wondered, "If engineered metal is over \$7 million now, how much had precast concrete increased?"

A concrete building is better suited to survive a disaster and is expected to have a longer life and lower maintenance costs than engineered metal. Based on the information received from our architect and general contractor on the price of precast, our board

decided to put the design out for bid again in both engineered metal and precast.

In January of 2022 the new bids for Engineered Metal came in at \$7.4 million, \$200,000 more than in July of 2021. The board again rejected the bids for Engineered Metal.

The bids for precast concrete, with some value engineering adjustments, came in at approximately \$8.3 million which was 15.3% higher than the estimated cost in 2018. This averaged out to 3.6% per year of inflation which was reasonable enough for the board to move forward with this design and award the bids.

The decision by the board of directors to move forward with a new facility was not taken lightly, and the leadership they showed during the process was impressive. They took into consideration the current condition of our buildings, lack of space, and sought out experts within the utility and building industries who said we may see prices level out in the future, but they do not expect them to go back down.

There was much conversation about building a new facility without impacting rates. But the reality is every penny we spend comes from our member rates, our sole source of revenue. Based on budgeted project costs, the overall rate impact to our members for the interest and depreciation of the new facility will range between 3 and 4% depending on the interest rates we receive at the time we draw the money.

At this point, we expect the Rural Utility Service (RUS) to allow us to borrow approximately \$7.6 million. We plan to draw \$4.8 million in early April between 3 and 3.5% from our new building loan. We conservatively projected a range of 4 to 5% for an additional \$2.8 million, assuming the Feds increase rates by 25 basis points 3 to 7 times this year.

We plan to minimize the rate impact to members by utilizing our revenue deferral account and through other cost cutting measures. We currently have \$1,684,000 in the deferral and plan to bring in \$210,500, per year, over the next 8 years.

The City of Danube agreed to cover the cost to provide water and sewer to the location and a tax abatement valued at close to \$645,000 dollars. Tax abatement is a common tool used by cities to
(Continued next page)

COOPERATIVE CONNECTIONS

RENVILLE-SIBLEY CO-OP POWER

(USPS 019-074)

Board of Directors

Roger Manthei – Chair
Wayland Zaske – Vice Chair
Alan Neyers – Secretary/Treasurer
Gary Eekhoff
Matt Haubrich
Whitey Hinderman
Gary Peterson
Kylie Rieke
Helen Ruebel

Renville-Sibley Employees

Gene Alex – Line Superintendent
Brian Athmann – Journeyman Lineman
Shawn Beckler – Crew Chief
Mike Benson – Journeyman Lineman
Brad Braulick – Crew Chief
Nick Bruns – Systems Coordinator
Anthony Carruth – Journeyman Lineman
Amy Ervin – Consumer Accounts Representative
Brayden Fischer – Journeyman Lineman
Cindy Mertens – Administrative Services Manager
DeeAnne Newville – CEO
Clint Olson – Journeyman Lineman
Kathy Ridl – Office Assistant
Shane Suess – PT Janitor
Lenae Wordes – Communications Manager

RENVILLE-SIBLEY COOPERATIVE CONNECTIONS is published monthly by Renville-Sibley Co-op Power Association, 103 Oak Street, Danube, MN, 56230 for its members. Electric cooperative members devote 50 cents from their monthly electric payments for a subscription. Non-member subscriptions are available for \$6 annually. Periodicals Postage Paid at Danube Post Office, Danube, MN 56230 and at additional mailing offices. POSTMASTER: Send address changes to: Renville-Sibley Cooperative Connections, PO Box 68, Danube, MN 56230; Telephone (320) 826-2593; Toll Free 1-800-826-2593; Fax (320) 826-2679.

Web site: www.renville-sibley.coop

This institution is an equal opportunity provider and employer.

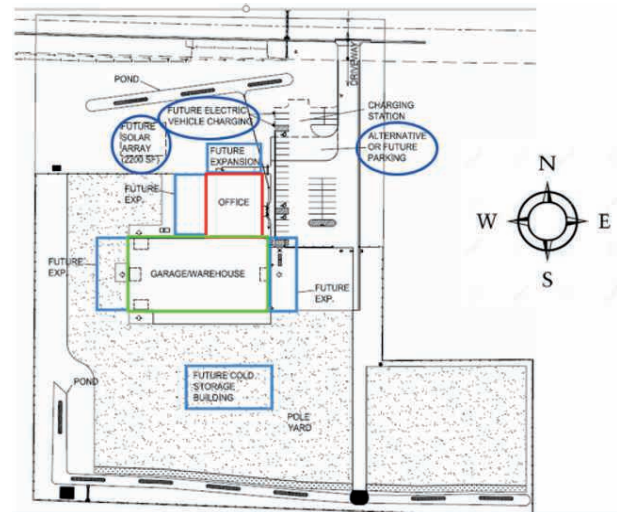
Manager's column, *continued*

encourage business development. The \$645,000 is not taken from other taxpayers, it is simply a delay in the city gaining the taxes from our new building. Tax income they would not receive, if we chose to build in another location. We are still finalizing the details of the tax abatement. 780400

We purchased a 10-acre plot of land on the south side of Highway 212, adjacent to Grizzly Supply in Danube. Renville-Sibley's facilities committee and board explored various sites before selecting this parcel. We will serve our own electric load at this location.

This drawing to the right shows the entire building laid out on the 10-acre plot. The Garage/warehouse is outlined in green and the Office is

outlined in red. The pole yard will be located to the south of the building. All of the areas outlined with blue rectangles represent designated expansion locations for the future. The areas circled in blue to the north are earmarked for future parking, electric vehicle charging and a solar array, to be installed when the time is right. (Continued on page 14)



Minnesota's extreme heat law

Minnesota Statute 216B.0975 requires that, "a utility may not involuntarily disconnect residential services in affected counties when an excessive heat watch, heat advisory, or excessive heat warning is in effect and has been issued by the National Weather Service."

Renville-Sibley will continue to make efforts to stall involuntary disconnection of our members' electric service for non-payment and will continue to provide our members with past-due account opportunities to work out a feasible payment schedule. However, in order to construct a payment plan, members must contact Renville-Sibley ahead of time to make payment arrangements and to sign a payment agreement.

Renville-Sibley does not want to interrupt service to any member at any time, but in a cooperative, all members are affected by those whose electric bills remain unpaid. To ensure fair and equitable rates for all our members, those members with past-due accounts that neglect to contact the office to make mutually agreed payment arrangements, or members who fail to meet agreed upon payment arrangements, will have their electric service disconnected once the excessive heat watch, advisory or warning has expired.

June is National Safety Month

While your local electric cooperative often focuses on electric safety and provides information to keep you and your family free from harm, there are many other dangers lurking out there.

In recognition of National Safety Month, we're sharing the National Safety Council's list of the top causes of preventable injuries and death away from the workplace.

POISONING. In 2011, accidental poisonings overtook car crashes for the first time as the leading cause of unintentional injury-related death for all age groups combined. Poisoning deaths are often caused by exposure to gases, chemicals and other toxic substances, but prescription drug overdose is by far the leading cause.

VEHICLE CRASHES. Crashes are the second-leading cause of unintentional injury-related death overall. Impaired driving, distracted driving, speeding and inexperience can cause a life to be cut short in the blink of an eye.

FALLS. Falling is the third-leading cause of unintentional injury-related death over all age groups, but it's the No. 1 cause of death for those aged 65 and older.

CHOKING AND SUFFOCATION. Choking on food or other objects is a primary cause of harm and death. Suffocation and choking rank higher among the elderly and infants.

DROWNING. It's the No. 1 cause of death for children from ages 1 to 4, mostly due to children falling into pools or being left alone and unsupervised in bathtubs.

FIRES AND BURNS. Fires often start at night, when families are asleep and most vulnerable. A working and well-maintained smoke alarm will cut in half the chances of dying in a fire.

NATURAL AND ENVIRONMENTAL INCIDENTS. Weather-related disasters claim hundreds of lives per year. You should learn all you can about emergency preparedness and always have an emergency kit on hand in your home.

BOWLING FOR CHARITY IN MITCHELL



More than 80 cooperative employees showed up in Mitchell for the 7th Annual Line Patrol Charity Bowling Tournament sponsored by Central Electric. The Lacreek Electric Headhunters shown above (Tiff Pettit, Terri Gregg, Cody Allen, Ryan Pettit) took top honors. The event was organized to raise money for a fund used to help electric co-op employees and their families in times of need. Find out more about this event and South Dakota's electric cooperatives by visiting Cooperative Connections Plus. Simply scan the QR code at right.



Call 811 before you dig

Maddy Pannell

Maddy Pannell, age 10, reminds electric cooperative members to call 811 before digging into the ground when planting trees or pursuing other outdoor projects. Maddy is the daughter of Southeastern Electric members Scott and Kim Pannell of Sioux Falls.

Kids, send your drawing with an electrical safety tip to your local electric cooperative (address found on Page 3). If your poster is published, you'll receive a prize. All entries must include your name, age, mailing address and the names of your parents. Colored drawings are encouraged.



DELICIOUS DAIRY

SWEDISH CREME**Ingredients:**

2 cups heavy cream
1 cup, plus 2 tps. sugar, divided
1 envelope unflavored gelatin
1 tsp. almond extract
1 tsp. clear imitation vanilla extract
2 cups (16 oz.) sour cream
1 cup fresh or frozen red raspberries

METHOD

In a saucepan, combine cream and 1 cup sugar. Cook and stir constantly over low heat until candy thermometer reads 160 degrees, or steam rises from pan. (Do not boil). Stir in gelatin until dissolved; add extracts. Cool 10 minutes. Whisk in sour cream. Pour into eight dessert glasses or small bowls. Chill at least 1 hour. Before serving, combine raspberries and remaining sugar; spoon over each serving.

Joanne Singrey-Johnson,
Watertown

TUNA EGG SALAD**Ingredients:**

3 6 oz. cans tuna packed in water
3 eggs hard boiled, peeled and chopped
2 small dill pickles diced
1 large celery rib diced
1/4 cup red onion minced
1 tbsp. lemon juice or red wine vinegar
2 tsp. garlic powder, optional
1/4 tsp. salt, or to taste
Ground black pepper, to taste
1/2 cup plain Greek yogurt, 2% fat
2 tbsp. mayo

METHOD

Drain cans with tuna well. Transfer to a large bowl and separate into flakes with a fork. Add chopped and peeled hard boiled eggs, pickles, celery, red onion, lemon juice, garlic powder (if using), salt, pepper, yogurt and mayo. Stir well with a fork and refrigerate. Serve cold in a sandwich or over salad greens. Make Ahead: Tuna egg salad tastes best cold. For best results, refrigerate 30 minutes before eating.

ifoodreal.com

EASY SHERBET**Ingredients:**

1 pkg. orange or lime jello
1 cup boiling water
3 cups milk
Pinch of salt
2 tbsp. lemon juice
1-1/4 cup sugar

METHOD

Dissolve jello in boiling water. Add remaining ingredients. Freeze until 1/2 inch thick at edge of tray. Empty into mixing bowl and beat thoroughly. Return to freezer. This works well if put in a loaf pan.

Joy Hagen, Webster

EXTRA GRILLED CHEESE**Ingredients:**

1 tbsp. butter, softened
2 tsp. Parmesan cheese, grated
Dash of garlic powder
4 slices bread
2 slices sharp cheddar cheese
2 slices Swiss cheese

METHOD

In a small bowl, combine butter, parmesan cheese, and garlic powder. Spread an even layer on one side of each slice of bread. Place 1 slice of cheddar cheese and 1 slice of Swiss between two bread slices, with the buttered side facing out. Cook in hot skillet for about 2 minutes, until the crust is golden. Flip sandwich and grill until crust is golden and the cheese is melted. Slice and serve. May add grilled onions if you choose. Just saute in the pan before cooking the sandwiches and add to the sandwiches between the cheese slices.

Kristina Manecke, Midland

Please send your favorite recipes to your local electric cooperative (address found on Page 3). Each recipe printed will be entered into a drawing for a prize in December 2022. All entries must include your name, mailing address, phone number and cooperative name.

Renville-Sibley Annual Meeting in review

The 84th annual meeting of Renville-Sibley Cooperative Power Association was held on Thursday, March 31 at the Redwood Area Community Center. Jake Rieke was the guest speaker and shared information about the Minnesota Agriculture and Rural Leadership (MARL) program. He explained that MARL is a two-year leadership training program for those connected to agriculture. As a participant in this program, Jake shared some pictures of the various agricultural industries he experienced.

Alan Neyers, the Secretary/Treasurer of the Board, reviewed the results of the 2021 financial audit. CEO DeeAnne Newville presented information on the new facility project. She shared the project milestones, construction considerations, member rate impact, tax abatement, and renderings of the facility.

Director Matt Haubrich and Director Kylie Rieke announced the scholarship winners selected by the committee. They were as follows: \$1,000 Basin Electric – Jennifer Bratsch; \$1,000 Renville-Sibley sponsored scholarship – Benjamin Beranek.

A random drawing was held from the remaining applicants to select three additional \$1,000 scholarship winners. The names drawn were Elise Braem, Kayli Ryks and Caylee Weber.

Directors elected to serve a 3-year term were as follows: District 1 – Whitey Hinderman; District 2 – Wayland Zaske; District 3 – Gary Eekhoff

Miss Becky's Catering prepared and served the meal following the meeting.

Thank you to all members who were able to attend the annual meeting.



At top, Board Secretary/Treasurer Alan Neyers reviews the 2021 financial audit. Above, left, scholarship winners Jennifer Bratsch, Benjamin Beranek and Elise Bream pose for a picture. Above, right, young Renville-Sibley member Zach Swanson was excited to have his name drawn for an Inflatable Easel.

Annual Meeting Prize Winners

Red = Kid's gift

Early Bird Gifts:

1. \$25 Energy Gift Certificate – Dennis Hanlon
2. Stud Sensor – Tom Runk
3. Ring Toss Wood Game – **Maverick Brown**
4. \$25 Energy Gift Certificate – Brad Nere
5. Oriole Feeder – Karen/Joesph Schulte
6. LED Rechargeable work light – Douglas Kiecker
7. \$25 Energy Gift Certificate – Dorothy Frikke

Remaining Member Gifts:

1. \$25 Energy Gift Certificate – Chris/Steve Hettig
2. Dustbuster – Roy Myers
3. \$25 Energy Gift Certificate – Donald Lee
4. Battery Daddy – Jason Swanson
5. \$25 Cenex gift card – James Kosak
6. \$25 Energy Gift Certificate – Robert Gummert
7. Food Chopper – Richard Hellendrung
8. \$25 Energy Gift Certificate – Marlene/Darnell Bratsch
9. Garage Laser Parking Guide – Arlyn Zeit
10. \$25 Energy Gift Certificate – NancyLee/Duane Miller
11. Patio Shield Mosquito Protection – Gary Simondet

12. Wigglin Water Sprinkler - Maya Rieke

13. \$25 Energy Gift Certificate – Gary Wertish
14. \$25 Cenex gift card – Eric Nelson
15. Magnetic Sweeper – Mark Clobes
16. Grill-Gleam – Connie Mulder
17. \$25 Energy Gift Certificate – Jim Schewe
18. Swiffer Wet Jet – Barbara Marks
19. Kids folding chair – **Levi Swanson**
20. \$25 Cenex gift card – Dave Lang
21. \$25 Energy Gift Certificate – Darin Bratsch
22. Inflatable Serving Bar – Ron Kopacek
23. \$25 Energy Gift Certificate – Roger Freitag
24. Cordless Rechargeable Screwdriver – James Peterson
25. Inflatable Easel – **Zach Swanson**
26. \$25 Energy Gift Certificate – Robert Lee
27. \$25 Cenex gift card – Vernon Beran
28. Oscillating TurboForce Fan – Kathleen Frank
29. \$25 Energy Gift Certificate – Wayne Zaske
30. \$25 Energy Gift Certificate – John Lothert
31. East River Gift – rain gauge – Cindy Grosklags

Variety of Payment Options Available to Members

Renville-Sibley members have a variety of options available to pay their monthly electric bills. Located on the top right side of the homepage of Renville-Sibley's website www.renville-sibley.coop is the SmartHub and PayNow option. The difference between these two options is the SmartHub application requires a username and password and will give more account information such as view and manage your usage tool, billing and payment history, the ability to manage the contact information, create account notifications along with the option to make a payment or set up autopay. The PayNow option can be accessed by entering the account number and last name. The only option available on this site is to make a payment on the account.

Along with the traditional payment method of mailing or dropping off a check, Renville-Sibley offers an automated pay by phone option which is available in both English and Spanish. Members can call 844-244-1498 to make a payment on the account, update the phone number or update bank draft information.

More and more members are setting up their accounts for automatic payment on the 3rd. This convenient



service can be set up by completing an in-house form that allows Renville-Sibley to deduct the balance from either a checking or savings account on the 3rd of each month. Members also have the option to set up automatic payment in SmartHub. Through SmartHub, members can select the payment source to be either a checking or savings account or a credit card.

Also available to the membership is budget billing. Members on budget billing pay the budget amount, which is the average bill calculated over the

past 12 months factoring in any rate increases for the next year if applicable. Budget billing is great for members who experience a higher electric bill during the winter months and want to level their payments throughout the year. All accounts in the budget payment plan must be paid in full each year with the August 3rd payment.

Anyone interested in budget billing should contact the office to determine what their monthly budget amount will be and to get signed up for the program.

Reminder: Let us know if there are any new changes to your electric service

Renville-Sibley encourages any member planning on making changes to their service in 2022 to please contact our office as soon as possible. In order to complete these projects on time, material may need to be ordered

well in advance as often there is extended lead time to get the appropriate material. In addition, crew time will be scheduled in the order project downpayments and material are received.

DEEP DIVES

Dozens of scuba divers from South Dakota and Minnesota pursue their hobby not only in local lakes and rivers but also in the Caribbean. *Photos by Steve Nedved*

Divers explore underwater habitats from the lakes of the Upper Midwest to the Caribbean

Billy Gibson

billy.gibson@sdrea.coop

It's a sunny springtime Saturday morning and outdoors enthusiasts all across the state are buzzing with excitement to kick off another weekend adventure.

They're saddling up their horses, slinging their fishing gear into their boats, cranking their ATVs and lacing up their hiking boots.

In a small shop just south of Mitchell, there's a different kind of energy and amped-up anticipation filling the air. Steve Nedved is busy rigging up scuba tanks and inspecting air regulators for about 20 fledgling divers eager to learn a new skill and experience new thrills.

Nedved is owner of Dakota Scuba and he's finding that more and more adventurers are becoming interested in exploring the aquatic world through a fisheye view, whether that's in the chilly waters of the Missouri River or the crystal-clear surf of the Caribbean.

While the scuba diving season in

the Upper Midwest is relatively short, Nedved stays busy most months out of the year teaching scuba lessons in the Mitchell area and tending to vacationing clients from his Villa Dakota retreat in Cozumel.

It turns out that he and his student-clients can board a plane in Sioux Falls at 7 a.m., make a quick stop in Dallas-Ft. Worth, and be ready to hit the water in Cozumel just after lunch.

"It works out pretty well, and people love to take a fall and winter vacation and explore Cozumel, which is one of the best spots for diving because the visibility can be more than 100 feet and there's so much marine life to see," Nedved said.

The master diver's interest in scuba was sparked back when he was a firefighter and paramedic in Mitchell. After responding to too many emergency situations involving bodies of water, he and his colleagues decided they needed to be trained in diving as part of meeting their professional responsibilities and serving the public.

He received his certification in short order and later decided to venture down to Cozumel to earn his teaching certification through the Professional Association of Dive Instructors so that he could be qualified to train his colleagues back in Mitchell.

He and his wife Nancy, who together own the Nedved Media radio network, fell in love with the tropical paradise and after a dozen diving trips decided it made sense to purchase a home right on the water. Before he knew it, he found many others were beating the same path to Mexico to enjoy the sun, sand and scuba adventures.

"I didn't really start it with the intention of going public, I just didn't realize at the time how much interest there was," he said. "People around here in Mitchell started asking me to train them for recreational certification and then they'd dive here or they'd go to Florida or Cozumel on vacation with their families. We started renting out our place in Cozumel to accommodate people during the times we couldn't be there ourselves."

He also noticed an increasing interest in spearfishing in places like the Oahe



Downstream Recreational Area and Pactola Lake in the Black Hills, so he decided to open the shop to serve as a local and regional outfitter.

Nedved, who has logged more than 1,000 dives since he started in 2006, uses the Mitchell Recreation Center for local training and has played a role in certifying individuals from age 10 to 70.

“It’s not that physically laborious or difficult. Of course, you have to be in condition as with any kind of outdoor sport, but it’s not inherently dangerous in any way if you follow the guidelines,” he said.

Allen Hiller of Pierre is one of Nedved’s recent proteges. Though he had done some snorkeling and diving at sites like Sully Flats, Cow Creek and below the Oahe Dam, Hiller decided he wanted to kick his scuba game up a few notches. So he enlisted Nedved’s services and spent eight days at Villa Dakota last March earning his open water diving certificate.

At the age of 53, Hiller is a veteran of Desert Storm and Desert Shield, a former diesel and aircraft mechanic,



Steve Nedved is shown at left with his catch after a day of spearfishing at Sully Flats. Above, Nedved (at right) works with student Allen Hiller on open water certification.

and spent nearly 20 years working for the Union Pacific Railroad in North Platte, NE. He describes himself as an avid hunter and fisherman who is always up for an adventure. Since his visit to the Caribbean, Hiller says he wants to expand his knowledge and experience under water.

“I really caught the diving bug being down there in a beautiful part of the world with the sun and the sand and the clear water where it seems like you can see forever. I want to continue on and get my PADI certification, my night diving certification, and become a master diver,” Hiller said. “I also want to do a lot of spearfishing and learn how to get better at it. Steve was really great to work with.”

Nedved said that once his students become accustomed to the awkward act of breathing through a mouthpiece, they begin to relax and enjoy the experience of discovering a new environment with different lights, colors and sounds.

“People like to hunt for fish and explore underwater quarries and see what’s on the bottom of the river bed,” he said. “When I take them out for the first

SCUBA RULES

Here are four requirements for scuba diving in South Dakota:

- Divers are required to use a red and white Diver Down flag when diving
- Dive flags must be at least 8"x10"
- Divers must stay within 75 feet of their dive flag
- Boaters and vessel operators are required to stay at least 75 feet from dive flags

time, we can’t really speak when we’re underwater, but when we come up they start chatting away with excitement about the things they saw. It’s really addictive. You rarely see just one person in a family that’s a diver. Usually, after one person does it, the others have to follow. It’s a good sport for a lot of people.”

Memorial Day Notice

Renville-Sibley will be closed on May 30 in Observance of Memorial Day.



Comparative Report

	Current YTD through March 31, 2022	One Year Ago YTD through March 31, 2021	10 Years Ago YTD through March 31, 2012
average # of Consumers	1,888	1,882	1,924
kWhs purchased	53,756,431	56,421,145	42,205,199
Cost of purchased power	\$2,869,691.83	\$3,688,101.46	\$2,086,205.99

FREE Want Ad Service

Members can submit ads for the following categories: Giveaway, For Sale, For Rent, and Wanted. Ads should be or are limited to no more than 15 words and must be received by the first of the month to be included in the following month's newsletter. Renville-Sibley reserves the right to edit content or exclude ads due to space restrictions. Ads will be run one time only unless resubmitted. Please complete the following information and mail it to the Renville-Sibley Cooperative Power, PO Box 68, Danube, MN 56230.

Name: _____

Address: _____

Phone number: _____

Ad to be placed (limit of 15 words per ad)

Type of ad: ☐ Giveaway ☐ For Sale ☐ For Rent ☐ Wanted

WHERE'S THE NUMBER?

Last month Richard Hellen-drung found his member number in the newsletter. Congratulations! The credit will start over with a value of \$15. Another number has been hidden in this newsletter. If you find your number and call the office by the 1st of June, you will receive this credit on your electric statement. Good luck in your search!

OUTAGE REPORT

Affecting 10 members or more - none

Date: 03-16-22

Time off: 6:44 pm

Time on: 7:40 pm

Substation: Henryville

Cause: transformer fuse blown

Please contact Renville-Sibley's office for more details about these power outages.

FOR SALE

2 steel bins: Sioux 10,000 bu. and American 7,000 bu. Also, 1,600-gallon water tank.

James Santjer
Clara City, MN
320-212-2775

April board meeting highlights

The April board meeting was held on Monday, April 25 at 8 am. All board members were present. Others present were CEO DeeAnne Newville, Cindy Mertens, Gene Alex, and Lenae Wordes.

The election of officers was held with the following results:

- Chair – Roger Manthei
- Vice Chair – Wayland Zaske
- Secretary/Treasurer – Alan Neyers

The board reviewed and approved the following items:

- Minutes of the March 28 board meeting
- Director compensation – no change from previous year
- Board committees
- Annual meeting is set for Thursday, March 30, 2023 at the Redwood Area Community Center
- Board meeting dates and times from September 2022 to August 2023.
- Officer appointments of the cooperative
- Operating and disbursement reports for the month of March
- Capital credits to an estate
- 2023 material order
- Safety report for March
- RS and 401(K) Pension Plan restatement
- CFC Annual Meeting voting delegates

- CoBank Proxy ballot and form
- CFC Cooperative System Integrity Fund
- BradyMartz audit and tax service engagement proposal
- Threshold limit for new facility change orders.

The board reviewed:

- Conflict of Interest disclosure
- Minnesota Electric Cooperatives' Commitment to Transparency & Accountability
- Cooperative Attorney report
- Capital credits transferred
- Total new members
- Reports from staff members as to the activities in their department. Items in the reports include:
 - High-level Statement of Operations review – YTD through March (unaudited)
 - Organization activities
 - Facilities update
 - East River update
 - Basin Electric update
 - NRECA update
 - MREA update
 - KRTA data
 - Linecrew work in progress, equipment update, and outage update
 - Accounts receivable
 - Annual meeting

Please contact the Renville-Sibley office if you would like more information regarding the board meeting.

NOTICE:

The May board meeting will be held on Monday, May 23 at 8 a.m.
The June board meeting will be held on Monday, June 27 at 8 a.m.

MISSION STATEMENT

Renville-Sibley Cooperative Power Association will provide efficient, reliable electric energy and services to enhance the quality of rural living.

OPERATION ROUND UP MEETING

The Operation Round Up Board of Trustees met on Tuesday, April 19. The following donations were approved:

- Central Minnesota Christian School - \$500
 - After-prom party
- Fairfax Royalty - \$1,000
 - Funds to run program
- United Way of West Central Minnesota - \$1,000
 - Imagination Library books to children in Renville County

The next meeting of the Operation Round Up Board of Trustees will be Tuesday, July 26, 2022.

THANK YOU

Thank you for the great meal and prize at the annual meeting. Keep up the good work. Thanks again.

Gary Simondet



Desmond Dean of Dakota Sports in Aberdeen says e-bikes are all the rage among outdoors enthusiasts. Photo by Billy Gibson

Electric bicycles give riders the little extra push they need - or not

Billy Gibson

billy.gibson@sdrea.coop

Sometimes when you find yourself struggling to move ahead, all you need is a little boost to get where you need to go.

That's the idea behind the invention of the electric bicycle. For those who enjoy mountain biking, pedaling for fitness or just commuting back and forth to work in the open air, the electric bike is becoming the cycle of choice.

Desmond Dean is manager of Dakota Outdoors in Aberdeen and he reports that sales are brisk with his line of Trek e-bikes. The first misconception he typically has to address with his growing list of curious customers is that an e-bike isn't a motorcycle.

"It's a bicycle. There's no throttle and you're in complete control the whole time. The battery and small motor are just there to give you some assistance when and if you need it," he explained.

"They're getting so popular because you can get a wide range of exercise. If you're having trouble with the wind or going up a hill, or if you just want to increase your distance, you can get the extra push you need. You can get some assistance or no assistance."

A battery usually takes about 5-6 hours to fully charge and there are models built for navigating off-road trails, touring, cruising or just moving around town from one point to the next. Prices can range from a few hundred dollars for a youth model to several thousand bucks for adult versions. Some bikes can top out at nearly 30 mph in the highest gear settings and some sweat equity.

Dean highly encourages his customers to take his e-bikes out for a spin around Aldrich Park across from the store because once the shopper puts the Trek through its paces and gets accustomed to the experience, "the bikes tend to sell themselves."

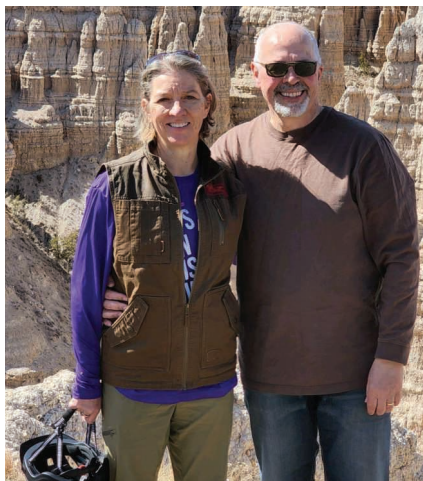
Mary Duvall, a state senator from

Pierre representing District 24, is a life-long fitness buff and has done a lot of pedal pumping over the years. So when her husband Rob suggested they purchase a pair of e-bikes, she was admittedly skeptical. What would be the point of pedaling if you're not going for the burn?

"I looked at it like it would be cheating and we wouldn't get a quality workout," she said. "But I quickly learned I was wrong. I can work as hard as I want and get whatever workout I feel like, or take it as easy as I want, depending on the day."

The Duvalls invested in his-and-her Aventons with thick sturdy frames and wide tires for handling uneven surfaces like the Black Hills, the Badlands and the undulating terrain around Pierre. They also chipped in for safety helmets equipped with an intercom system so they can keep in constant audio contact.

The couple covered 80 miles in a single day on the Mickelson Trail, stopped overnight in Hill City to recharge their batteries and their weary quadriceps, then rode another 56



Shown at left, Mary and Rob Duvall of Pierre have enjoyed their investment in e-bicycles and can go for long distances to see new sights. *Photos provided by Mary Duvall*

miles the following day. They ended up encountering another couple who had hauled their e-bikes from Texas to tour the Mickelson Trail. Another couple they met from Minnesota were using their e-bikes to complete the entire trail from Edgemont to Deadwood.

“We ride them at least once a month and they’ve opened up lots of options that we couldn’t tackle with regular bikes,” Duvall said. “It’s a fun way for us to get outside and enjoy some exercise and fresh air.”

Approximate
number of e-bikes
40 million
expected to be sold
worldwide in 2023

Of course, the idea of attaching a small battery-powered motor to a bicycle frame isn’t new. The first patent for an e-bike was issued in 1895. There was a global surge in sales of 35 percent between 1993 and 2004 after Yamaha invented, manufactured and marketed

its own pedal-assist system. By the end of 2023, worldwide e-bike sales are expected to reach 40 million units, or more if gas prices continue to escalate.

Surveys consistently indicate most e-bike buyers make the purchase with the goal of replacing trips they’d otherwise take in their cars. But Ron Block of Webster bought his for another reason: he needed to keep up with his wife Nancy, a school teacher who also

happens to be a competitive marathon runner.

“She was leaving me behind, so I figured I needed some assistance to make it a little easier on me,” Ron said. “I rode a lot when I was a kid, but now I’m middle-aged and the bike gives me the ability to set the power to however much help I need.”

The Blocks enjoy biking together each week as part of a local cycling club, though occasionally they like to venture farther afield. Last summer, they biked among the giant redwoods in northern California and Oregon and also pedaled the Katy Trail in Missouri. This year they plan to take a trip to The Netherlands and rent bikes to see the sights.

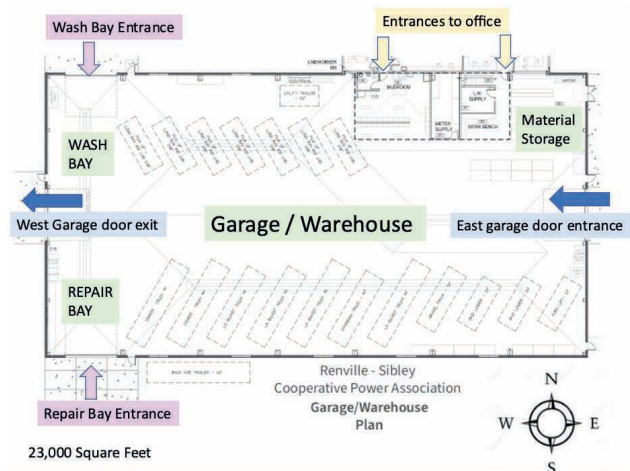
Ron said he would encourage those who may be interested in purchasing an e-bike to find a nearby dealer, or find a friend who already has one and ask to take it for a test ride.

“That’s what I did before I bought one and I’ve been very satisfied,” he said. “I’ve talked to a lot of people who have them and they’re very happy they made the investment.”

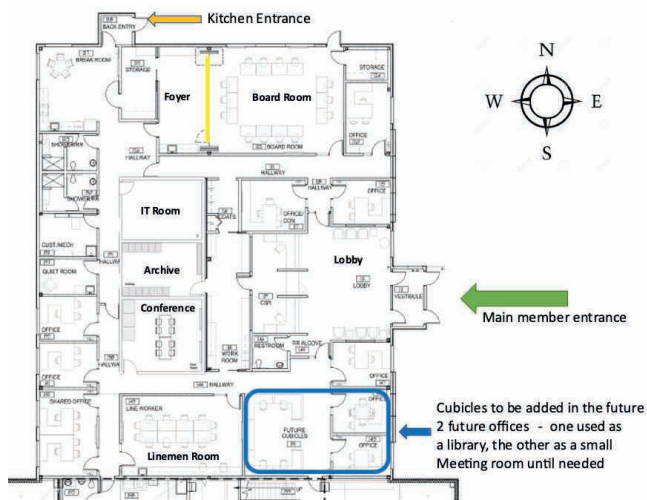
Ron Block of Webster pedals his e-bike along a floating bridge on the Mesabi Trail in northern Minnesota. *Photo provided by Ron Block*



Manager's column, *continued*



The new garage (shown above) is designed with a nice, open, drive through plan. Vehicles will enter from the east and exit to the west. The west side of the building has both a repair and wash bay that will be unencumbered by parked vehicles. The NE corner has been designated for material storage, metering supplies, lockers and a mud room, with doors entering into the office to the north.



Members will enter the office (shown above) from the east into a lobby area. The board foyer adjacent to the boardroom has a removable wall identified in yellow to open up the area for member informational meetings, the annual holiday open house and for training purposes.

We have designed a small portion of the office in the

southeast corner for future growth with a conference room and a library that can be converted to office space along with an open area designed to hold 4 cubicles.

We will be selling our current office and warehouse sites in Danube after moving into the new facility. Please contact the office if you would like information about either location.



We have been at this location 73 years. The original structure is 91 years old as it was initially constructed in 1931.



ENGAN ASSOCIATES
ARCHITECTS | INTERIOR DESIGNERS

Future View with Public Electric
Vehicle Charging and Solar Panels

With the construction of a new precast concrete building, we are looking forward to serving you, our members, for the next 100 years from our new location. We believe the design is practical yet provides some modest expansion options for growth and additional services in the future. I am so impressed with how

Manager's column, *continued*

creative the team was to meet our current needs while considering future possibilities with an overall conservative approach.



I would like to take a moment to thank our employees and board along with Ryan Breitbach from Breitbach Construction and Eagan Associates Architects - Richard Engan and our Renville-Sibley Member, Barbara Marks for their hard work and careful planning on this project. I would also like to thank the City of Danube for partnering with us on this endeavor.

All of the renderings of the building and the floor plans are displayed in the lobby at our current office in Danube. Please feel free to stop in or call the office if

We will be selling our current office and warehouse sites in Danube after moving into the new facility. Please contact the office if you would like information about either location.

you would like a more detailed discussion about the new facility or any other topic.

I am proud of all our employees and appreciate their dedication to you, our members. They are the ones who bring you safe and reliable electricity, answer your questions, maintain your data and make sure we meet all our state and federal mandates. I am honored to work with such an amazing group of individuals and I am thankful for the opportunity I have been given to be a part of your cooperative.

On behalf of our Board of Directors, leadership team, and employees, I would like to thank you for your patronage and support. We value the trust the membership has placed in us to make sound decisions to serve Renville-Sibley members.

Scholar of the Month

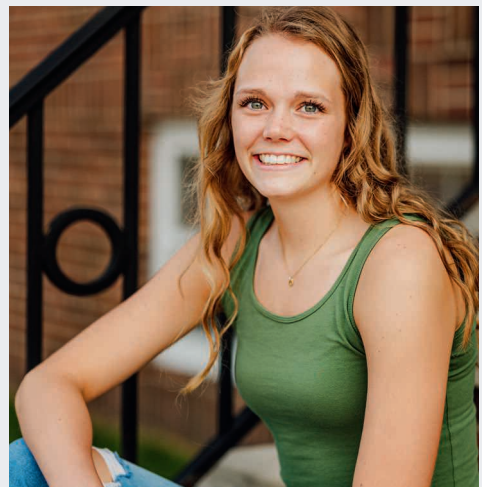
Congratulations to Molly Mulder from Central Minnesota Christian School for being selected as the April Scholar of the Month. Molly was nominated because she has a great attitude and good work ethic.

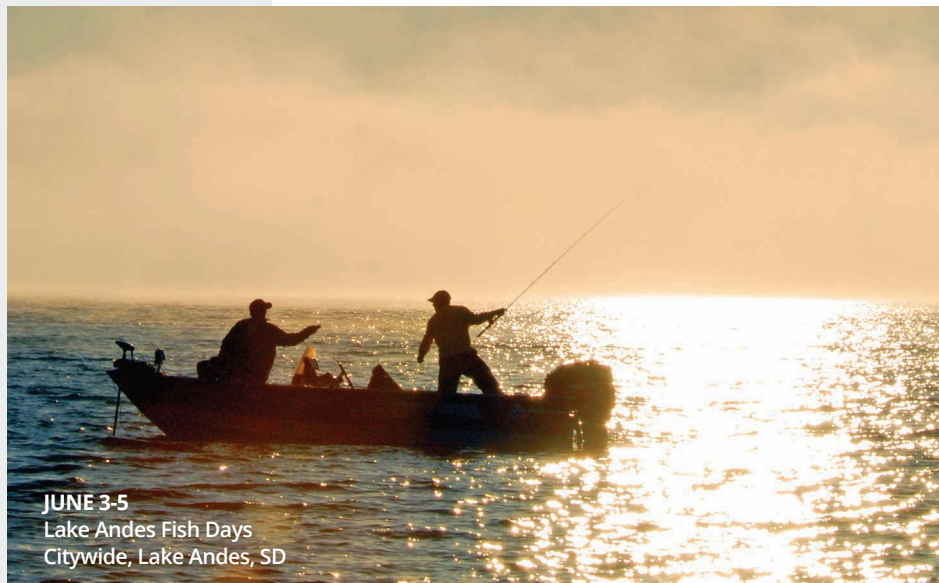
Molly is involved in choir, volleyball, basketball, and track, earning a college scholarship in track. She leads with respect

while participating with her sports teams and in the classroom.

Renville-Sibley Co-op Power salutes Molly Mulder as the April Touchstone Energy Scholar of the Month.

More information about the Scholar of the Month program can be found on our website www.renville-sibley.coop under the Customer Service tab.





JUNE 3-5
Lake Andes Fish Days
Citywide, Lake Andes, SD

To have your event listed on this page, send complete information, including date, event, place and contact to your local electric cooperative. Include your name, address and daytime telephone number. Information must be submitted at least eight weeks prior to your event. Please call ahead to confirm date, time and location of event.

To view the publication's master event calendar, scan the QR code below:



Or visit <https://sdrea.coop/cooperative-connections-event-calendar> to view more upcoming events.

MAY 28
Deadwood Live: Hank Williams Jr.
Outlaw Square, Deadwood, SD,
www.deadwoodlive.com

MAY 28
Memorial Weekend in Mitchell
Main Street, Mitchell, SD,
605-292-4444

MAY 28-29
Black Hills Renaissance Faire
Manuel Brothers Park, Lead, SD,
www.blackhillsrenfest.com

MAY 29-30
Back When They Bucked
Days of '76 Arena, Deadwood, SD,
605-718-0810

MAY 30
Prairie Points Quilt Guild Show
204 Hodge St., Buffalo, SD,
605-641-5591

JUNE 2-4
Annual Black Hills Quilt Show & Sale
The Monument, Rapid City, SD,
bhquilters.org/events

JUNE 2-5
Wheel Jam
South Dakota State Fairgrounds, Huron, SD,
www.wheeljam.com

JUNE 3-5
Fort Sisseton Historical Festival
11907 434th Ave., Lake City, SD,
605-448-5474

JUNE 3-5
Lake Andes Fish Days
Citywide, Lake Andes, SD,
605-487-7694

JUNE 10-12
Annual Custer Off-Road Rally
Various Locations, Custer, SD,
custersd.com/Off-Road-Rally

JUNE 11
The Big Mick
George S. Mickelson Trail, Deadwood, SD,
mickelsontrailaffiliates.com

JUNE 16-18
Czech Days
Lidice Street, Tabor, SD,
605-463-2478

JUNE 16-18
Wild Bill Days
Main Street, Deadwood, SD,
deadwood.com/event/wild-bill-days/

JUNE 16-19
South Dakota Shakespeare Festival
Prentis Park, Vermillion, SD,
605-622-0423

JUNE 17-18
Oahe Days Arts & Music Festival
Steamboat Park, Pierre, SD,
oahedays.com

JUNE 18
605 Summer Classic Beer & Music Festival
Cherapa Place, Sioux Falls, SD,
605magazine.com/605-summer-classic/

JUNE 18-19
Aberdeen Arts in the Park
Melgaard Park, Aberdeen, SD,
605-226-1557

JUNE 18-19
Brookings Kite Festival
Fishback Soccer Complex, Brookings, SD, 605-695-9071

JUNE 22-25
Crystal Springs Rodeo
17803 479th Ave., Clear Lake, SD,
crystalspringsrodeo.com

JUNE 24-26
Black Hills Bluegrass Festival
Rush No More RV Resort & Campground, Sturgis, SD,
blackhillsbluegrass.com

JUNE 24-26
Main Street Arts & Crafts Festival
Centennial Park, Hot Springs, SD,
mainstreetartsandcrafts.com

JUNE 24-26
Quarry Days
Citywide, Dell Rapids, SD,
605-428-4167

JUNE 26
Prairie Village Variety Show
Prairie Village, Madison, SD,
605-256-3644

JUNE 30-JULY 4
Annual Black Hills Roundup
300 Roundup St., Belle Fourche, SD,
blackhillsroundup.com

Note: Please make sure to call ahead to verify the event is still being held.