

Renville-Sibley

A Touchstone Energy® Cooperative 

February 2020 Vol. 20 No. 10

Cooperative Connections

**Reasons to
Love Your
Electric Co-op**

Page 8

**Outhouse
Racing in
Nemo**

Page 12

Please Join Us



DeeAnne Newville, CEO

dnewville@renville-sibley.coop
Phone: 320-826-2593 or
Toll Free 800-826-2593

I would like to personally invite you to join us for our member informational meetings and annual meeting

On behalf of Renville-Sibley Cooperative Power Association, I would like to personally invite you to join us for our member informational meetings and annual meeting.

In February, we will host four (4) member informational meetings on different days, times and locations within our service territory. You are welcome to attend whichever meeting is the most convenient for you.

- Saturday, Feb. 15 at 9 a.m. – Danube – Community Center
- Monday, Feb. 17 at 6:30 p.m. – Bird Island – Athmann's Inn
- Tuesday, Feb. 18 at 9 a.m. – Fairfax – Lion's Den
- Thursday, Feb. 20 at 1:30 p.m. – Sacred Heart – Community Center

Informational meetings provide an opportunity to learn about programs offered by Renville-Sibley, get an update on work being done on our system, hear about legislative and regulatory issues that impact our cooperative and receive a year-end review of our financial results. Member informational meetings are designed for member interaction in a less formal environment than an annual meeting.

The annual meeting will take place on Thursday, March 26. At the annual meeting, we will present a condensed version of what was discussed at the member informational meetings, award scholarships, conduct annual business as required in our bylaws and enjoy a meal and fellowship together. It's also an opportunity for you to exercise one of the most significant benefits of being a member of an electric co-op, by voting for the upcoming year's board of directors.

Renville-Sibley Cooperative Power Association is one of 895 electric distribution cooperatives across America that, collectively, deliver power to 56 percent of the nation's landmass. Electric cooperatives are private, locally operated electric utility businesses that are owned and regulated by their members to provide near-cost electrical service and governed by democratically elected local boards of directors.

There are currently 7,200 electric co-op board directors in America who serve in the community where they live. Unlike investor-owned utilities, they address local electrical energy issues with hometown values – issues like community economic development and setting affordable, sustainable rates for rural residents and farms. Your local electric co-op board members also work alongside the Minnesota and National Rural Electric Associations' lobbyists in St. Paul and Washington, D.C., to make sure our legislators are aware of how energy policy affects rural communities.

Electric co-op board members are responsible for asking questions, seeking outside expert opinions and establishing systems to review current cooperative business information. All board members must consent to the fiduciary duties of care, loyalty and obedience. The essential functions of your local electric cooperative board include:

- Setting the mission, vision and values.
- Establishing, maintaining and assessing legal, regulatory and internal compliance programs to mitigate the cooperative's risk.
- Setting electric rates.
- Policy development including bylaw requirements and CEO selection, appraisal and compensation.

The Rural Electrification Act of 1936 established the cooperative governance model and over the last 83 years, rural America has prospered. Then Texas-Congressman Lyndon B. Johnson founded Pedernales Electric Cooperative in 1938. During a speech to National Rural Electric Cooperative Association (NRECA) directors on July 14, 1965, President Johnson said, "Nothing has been more gratifying to me than my association with the rural electrification program. That program stands today as one of the most successful enterprises ever undertaken anywhere, at any time, by anyone."

The energy industry has seen unprecedented transformation since 1936. Today, the industry is changing faster than ever and electric cooperatives are rising to the challenge. As electric cooperative boards forge ahead, they're exploring new issues like beneficial electrification, distributed energy resources, battery storage and effectively integrating new technologies.

Fortunately, Minnesota's electric co-op board members have training opportunities to stay abreast of changes and best practices. Renville-Sibley Cooperative Power Association encourages diversity as new board members step forward to serve their community.

Rest assured, no matter what happens, we remain dedicated to providing you with safe, reliable and affordable electric service. Still, we encourage you to take part in helping us improve how we deliver that service. Please make it a point to join us at a member informational meeting and our annual meeting. We promise we will make it worth your while!

Renville-Sibley

Cooperative Connections

(USPS 019-074)

Board of Directors

Roger Manthei – Chair
Wayland Zaske – Vice Chair
Alan Neyers – Secretary/Treasurer
Gary Eekhoff
Matt Haubrich
Whitey Hinderman
Philip Nestande
Gary Peterson
Helen Ruebel

Renville-Sibley Employees

Gene Alex – Line Superintendent
Brian Athmann – Journeyman Lineman
Shawn Beckler – Crew Chief
Mike Benson – Journeyman Lineman
Brad Braulick – Crew Chief
Nick Bruns – Systems Coordinator
Anthony Carruth – Journeyman Lineman
Amy Ervin – Consumer Accounts Representative
Brayden Fischer – Journeyman Lineman
Cindy Mertens – Administrative Services Manager
DeeAnne Newville – CEO
Brandon Ochs – Journeyman Lineman
Clint Olson – Journeyman Lineman
Kathy Ridl – Office Assistant
Lenae Wordes – Communications Manager

RENVILLE-SIBLEY COOPERATIVE CONNECTIONS is published monthly by Renville-Sibley Co-op Power Association, 103 Oak Street, Danube, MN, 56230 for its members. Electric cooperative members devote 50 cents from their monthly electric payments for a subscription. Non-member subscriptions are available for \$6 annually. Periodicals Postage Paid at Danube Post Office, Danube, MN 56230 and at additional mailing offices.

POSTMASTER: Send address changes to: Renville-Sibley Cooperative Connections, PO Box 68, Danube, MN 56230; Telephone (320) 826-2593; Toll Free 1-800-826-2593; Fax (320) 826-2679;

Web site: www.renville-sibley.coop

This institution is an equal opportunity provider and employer.

Youth Tour Applicants

Each year, rural electric cooperatives across the nation sponsor roughly 1,900 students on the Rural Electric Youth Tour to Washington, D.C. The youth tour program continues to foster the grassroots spirit of the rural electric cooperatives by demonstrating to high school juniors and seniors how our government works and what the electric cooperative business model is all about.

In 2020, Renville-Sibley will be sending one high school junior or senior on an all-expenses-paid trip to the Washington, D.C., Youth Tour. The selected student will spend six days in our nation's Capitol visiting museums, chatting with politicians and making memories and friends that will last a lifetime. What is the best part of this trip? The best part is the fact that Renville-Sibley will pay all of the expenses.

More information and how to apply can be found below.

Contest purpose:

Select one youth to represent Renville-Sibley Co-op Power at the Washington, D.C., Youth Tour.

Eligibility:

The contest is open to any current high school junior or senior whose family is a member of our cooperative.

Requirements:

Contestant shall write a 300-word essay answering the question, "What makes you a good candidate to represent Renville-Sibley Co-op on the 2020 Youth Tour and what do you expect to gain from your Washington, D.C., experience?"

Complete a Youth Tour application form which can be found on Renville-Sibley's website.

Additional Information:

Deadline for application is Feb. 21, 2020. The winner will be announced by Feb. 28, 2020.

Tour Dates: June 20-25, 2020



Sample itinerary (subject to change):

Saturday, June 20

- Travel day
- Electric Cooperatives 101 class

Sunday, June 21

- Tour of Monuments, Arlington Cemetery, Smithsonian's, night monument tour

Monday, June 22

- Mount Vernon, National Museum of the Marine Corp, Old Town Alexandria and NRECA general session with other state youth tours

Tuesday, June 23

- Group picture in front of White

House, Newseum, National Cathedral, Holocaust Museum, John F Kennedy Center Performing Arts Center show

Wednesday, June 24

- Library of Congress, U.S. Capitol tour, visit the Galleries, Capitol visits with Senators and Representatives, US Botanical Gardens, Souvenir City

- NRECA dinner and dance

Thursday, June 25

- Travel day

More information can be found at the National Youth Tour website <http://youthtour.coop>

Space Heater Safety

Heating equipment is the second leading cause of home fires in the United States. More than 65,000 home fires are attributed to heating equipment each year. These fires result in hundreds of deaths, thousands of injuries and millions of dollars in property damage.

Portable electric space heaters can be a convenient source of supplemental heat for your home in cold weather. Unfortunately, they can pose significant fire and electric shock hazards if not used properly. Fire and electrical hazards can be caused by space heaters without adequate safety features, space heaters placed near combustibles, or space heaters that are improperly plugged in.



Safety should always be a top consideration when using space heaters. Here are some tips for keeping your home safe and warm when it's cold outside:

- Make sure your space heater has the label showing that it is listed by a recognized testing laboratory.
- Before using any space heater, read the manufacturer's instructions and warning labels carefully.
- Inspect heaters for cracked or broken plugs or loose connections before each use. If frayed, worn or damaged, do not use the heater.
- Never leave a space heater unattended. Turn it off when you're leaving a room or going to sleep, and don't let pets or children play too close to a space heater.
- Space heaters are only meant to provide supplemental heat and should never be used to warm bedding, cook food, dry clothing or thaw pipes.
- Install smoke alarms on every floor of your home and outside all sleeping areas and test them once a month.
- Proper placement of space heaters is critical. Heaters must be kept at least three feet away from anything that can burn, including papers, clothing and rugs.
- Locate space heaters out of high traffic areas and doorways where they may pose a tripping hazard.
- Plug space heaters directly into a wall outlet. Do not use an extension cord or power strip, which could overheat and result in a fire. Do not plug any other electrical devices into the same outlet as the heater.
- Place space heaters on level, flat surfaces. Never place heaters on cabinets, tables, furniture, or carpet, which can overheat and start a fire.
- Always unplug and safely store the heater when it is not in use.

Source: esfi.org

Getting Involved

The state legislatures of both Minnesota and South Dakota convened in early January. Need to contact your legislator while in Pierre or Saint Paul? Here's how:



Contacting Members of South Dakota's Legislature:

Go to <http://sdlegislature.gov/> From there, you can search your senator or representatives, see the committees which they are assigned and send them an email. Need to reach them by phone? You can call and leave a message with the Senate at 605-773-3821 or with the House of Representatives at 605-773-3851. You can also send a fax to 605-773-6806.

Contacting Minnesota Legislators:

For contact information on Minnesota house members, visit:

<https://www.house.leg.state.mn.us/members>

For contact information on Minnesota senators, visit:

<http://www.senate.leg.state.mn.us/members>

KIDS CORNER SAFETY POSTER



"Don't let anything get near your extension cords!"

Sierra Staufacker, 9 years old

Sierra is the daughter of Cory and Staci Staufacker, Balaton, Minn. They are members of Lyon-Lincoln Electric Cooperative, Tyler, Minn.

Kids, send your drawing with an electrical safety tip to your local electric cooperative (address found on Page 3). If your poster is published, you'll receive a prize. All entries must include your name, age, mailing address and the names of your parents. Colored drawings are encouraged.

Bountiful Brunch

Pineapple-Zucchini Bread

| | |
|--------------------------------------|-------------------------------------|
| 3 eggs | 3 cups flour |
| 2 cups sugar | 1 tsp. salt |
| 2 tsp. vanilla | 1 tsp. soda |
| 1 cup oil | 1 cup crushed pineapple, drained |
| 2 cups peeled and grated zucchini | |

Beat eggs, sugar, vanilla and oil. Mix in zucchini and dry ingredients; stir well. Fold in pineapple. Bake at 350°F for 1 hour. Makes 2 loaves.

Geraldine Dahlin, Beresford, SD

Apple Pie Breakfast Bake

| | |
|-------------------------------------|--|
| 2 cans refrigerated French bread | 1 (14 oz.) can sweetened condensed milk |
| 1 cup butter, melted | 1 tsp. apple pie spice |
| 1 (21 oz.) can apple pie filling | 1 tsp. vanilla |

Bake loaves as directed on can; cool 20 minutes. Cut 1-1/2 loaves into 1/2-inch cubes to equal 7-1/2 cups. Reserve remaining 1/2 loaf for another use. Increase oven temperature to 375°F. In a 9x13-inch glass baking dish, evenly layer melted butter, apple pie filling and bread cubes. In a medium bowl, stir together milk, apple pie spice and vanilla. Pour over bread, pushing bread down to absorb liquid. Bake 25 to 30 minutes or until deep golden brown and bubbly. Cool 15 minutes. Serve warm with maple syrup. (Note: You may also use day-old French bread cut into 1/2-inch cubes.)

Jean Osterman, Wheaton, MN

Breakfast Casserole

| | |
|---|--|
| 1 (8 oz.) can crescent rolls | 1-1/2 cups shredded cheese |
| 1 (16 oz.) pkg. bulk sausage, cooked and drained | 8 eggs, lightly beaten |
| Diced onion, green pepper and mushrooms, optional | 1/2 cup milk |
| 16 to 32 oz. hash brown potatoes, depending on number of servings desired | 1 pkg. country-style gravy mix, prepared according to package directions |

Press crescent rolls in a lightly greased 9x13-inch pan. Spread with sausage crumbles and veggies. Layer hash browns on top. Sprinkle with cheese. Combine eggs with milk; pour over all. Spread on gravy. Bake at 325°F for 1 hour or until cooked through in the middle.

Kim Jost, Agar, SD

Grilled Fruit with Cinnamon Oatmeal Crumble

| | |
|--------------------------------|--------------------------------------|
| 6 T. butter, softened, divided | 2 ripe peaches, halved and pitted |
| 2 T. light brown sugar | 2 ripe plums, halved and pitted |
| 1 tsp. cinnamon, ground | |
| 3/4 cup quick-cooking oats | |

Mix butter, brown sugar and cinnamon in a medium bowl. Reserve 2 T.; set aside. Add oats to remaining butter mixture, stirring until well blended. Brush fruit with reserved butter mixture. Place cut-side down on grill over medium heat. Tent with foil or close grill lid. Grill 2 minutes or until grill marks appear. Turn fruit cut-side up; spoon oat mixture evenly on top of each piece. Return foil tent or close lid. Grill 3 minutes longer or until fruit is tender and topping is crisp. Serve topped with whipped cream or ice cream, if desired. Cooking over a campfire? Place grill grate over top of campfire. Grill fruit as directed, rearranging hot coals as needed to maintain even direct heat. Makes 4 servings

Nutritional Information Per Serving: Calories 290, Total Fat 18g, Fiber 3g, Cholesterol 45mg, Sodium 137mg, Carbohydrates 29g, Protein 3g

Pictured, Cooperative Connections

Omelet in a Bag

| | |
|---------------------|---------------------|
| 2 large eggs | Green pepper, diced |
| Ham or bacon pieces | Mushrooms, chopped |
| Onion, chopped | Grated cheese |
| Tomato, diced | |

Give each guest a quart-size Ziploc freezer bag and have them write their name on the bag with a permanent marker. Crack 2 eggs into each bag (not more than 2). Shake to combine them. Put out a variety of ingredients and let each guest choose what they want in their omelet. Shake the bag. Zip the bag after making sure to get all the air out. Bring a large kettle of water to a full rolling boil. Place the bags into the water. When the water begins to boil again, boil for exactly 14 minutes. You can usually cook 6 to 8 omelets at a time. For more, make another kettle of boiling water. Open bags and the omelet will roll out easily. Serve with fresh fruit and coffee cake.

Roxanna Streckfuss, Mansfield, SD

Please send your favorite seafood, appetizer and beverage recipes to your local electric cooperative (address found on Page 3). Each recipe printed will be entered into a drawing for a prize in June 2020. All entries must include your name, mailing address, telephone number and cooperative name.

Are You Interested in a New Adventure?

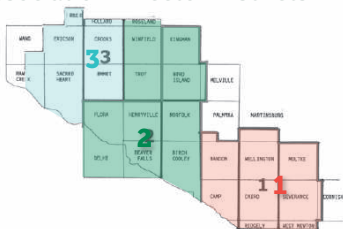
Renville-Sibley Cooperative Power Association is beginning to plan for the 82nd annual meeting of the membership that will be held March 26, 2020, at the Island Ballroom in Bird Island, Minn. Three (3) directors will be elected during that time, each for a three-year term.

The First District, consisting of the townships of Cornish, Severance and Moltke in Sibley County; the townships of Ridgely and West Newton in Nicollet County; and the townships of Cairo, Wellington, Martinsburg, Camp, Bandon and Palmyra in Renville County is represented by Alan Neyers, Whitey Hinderman and Philip Nestande. Philip Nestande's term will expire in 2020.

The Second District, consisting of the townships of Honner and Delhi in Redwood County; and the townships of Beaver Falls, Flora, Henryville, Birch Cooley, Norfolk, Melville, Bird Island and Kingman in Renville County is represented by Helen Ruebel, Wayland Zaske and Matt Haubrich. Matt Haubrich's term will expire in 2020.

The Third District, consisting of the townships of Roseland and Holland in Kandiyohi County; Rheiderland Township in Chippewa County; and the townships of Troy, Winfield, Emmet, Crooks, Sacred Heart, Hawk Creek, Ericson and Wang in Renville County is represented by Gary Eekhoff, Gary Peterson and Roger Manthei. Roger Manthei's term will expire in 2020.

Renville-Sibley Cooperative Power Association Director Districts



As stated in the Renville-Sibley bylaws, the following is the Qualifications and Tenure for the position of Director:

- Each director shall be a member of the Cooperative and shall be elected by the members within their respective district at the annual meeting of the members for a term of three years. No member shall be eligible to become or remain a director or to hold any position of trust in the Cooperative who is not a bona fide resident in the area served by the Cooperative, or who is in any way employed by or financially interested in a competing enterprise or a business selling electric energy or supplies to the Cooperative, or a business primarily engaged in selling electrical or space heating/cooling appliances, fixtures, or supplies to the members. When a membership is held jointly by two or more persons, including husband and wife, only one of such joint tenants may be elected a director, provided, however, that neither one shall be eligible to become a director, unless all shall meet the qualifications herein set forth.

Director qualifications required for service to the cooperative shall include:

- A. Must be an individual and must be at least 18 years of age.
- B. Must be competent and able to execute a contract.
- C. Must not have been convicted of a felony or gross misdemeanor during the preceding 5 years prior to becoming a director for the Cooperative or during the period while serving as a director.
- D. Must have a high school diploma or equivalent.
- E. Must make a reasonable effort to become and remain knowledgeable about special issues regarding electric cooperatives by attending training, workshops and seminars.
- F. Must attend at least three-fourths (3/4) of all monthly scheduled board meetings during any twelve (12) month period.

Upon becoming a candidate for and/or to remain a Director, an individual must

complete an annual conflict of interest disclosure form, approved by the Board of Directors. All Directors and/or Director candidates must comply with or meet the following conflict of interest qualifications:

- A. Shall not be a close relative of an existing Director, employee, agent or representative of the Cooperative other than an existing Director who will cease being a Director upon the candidate assuming office;
- B. Within 5 years immediately prior to becoming a Director, shall not have been a Cooperative Officer, employee, agent or representative of the Cooperative or any subsidiary or affiliated company;
- C. Shall not be employed by, materially affiliated with, nor share a material financial interest with any current Director;
- D. Shall not be engaged in any business, nor employed by, nor materially affiliated with, nor have a material financial interest in any individual or entity that:
 1. Is regularly, directly, and substantially competing with the Cooperative or any other entity that the Cooperative controls or in which the Cooperative owns a majority interest (Cooperative Subsidiary).
 2. Is regularly selling goods and services to the Cooperative or the Cooperative Subsidiary.
 3. Possesses a substantial conflict of interest with the Cooperative or the Cooperative subsidiary.
- E. A former Director is ineligible for employment by the Cooperative for five years following the end of the tenure as a Director.

As a Director, the member agrees to:

- Abide by, promote and uphold the Articles of Incorporation and By-laws, both of which can be found on our website, and Policies of Renville-Sibley Cooperative Power Association.
- Attend regular and special Board meetings of the Cooperative.
- Attend, when appointed, committee meeting of the Cooperative.

If anyone should decide to seek candidacy for the board of directors, there are many rewards to be enjoyed when elected. A director has the opportunity to demonstrate their leadership quality and increase

their knowledge within the cooperative business environment and the electric industry. As a director, this person could play a significant role in the future development of Renville-Sibley Cooperative Power Association.

A director also has a very important responsibility which is to uphold and abide by the bylaws of the cooperative. Directors are to act as the trustees for the assets of the cooperative and are assigned the duties of formulating, approving and reviewing the policies that provide guidelines for the cooperative.

The board is responsible for sending representatives to the affiliated association meetings that often include voting requirements. They include East River Electric Power Cooperative, Minnesota Rural Electric Association, Basin Electric Power Cooperative, National Utilities Cooperative Finance Corporation, CoBank, Cooperative Network and the National Rural Electric Association.

Directors attend seminars and meetings of several organizations to learn about the industry. Directors are asked to lobby and remain informed on legislative issues that could impact this industry and/or the cooperative way of doing business. The Board meets monthly and reviews financial reports, work plans, annual audits, planning documents and evaluates the cooperative operations while approving budgets and purchases.

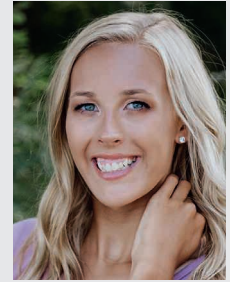
Most of all, a director should be available to visit with their constituents and have a genuine spirit of helping others at all times.

Board meetings are typically held on the last Monday of every month, beginning at 9 a.m. in December, January and February and beginning at 8 a.m. the rest of the year. The estimated time needed to be committed annually is approximately 30 days which includes monthly meetings and committee assignments. Directors are compensated per diem for their time as well as all personal expenses.

If you are interested in becoming a candidate for the Renville-Sibley Board of Directors, contact the Renville-Sibley office at 1-800-826-2593 before Jan. 31 for further information.

Scholar of the Month

Congratulations to Gracie Slagter from MACCRAY High School for being selected as the December Scholar of the Month. Gracie is a senior at MACCRAY High School. She was nominated because she is very involved in school yet finds time to volunteer in her church youth group and at community education events. In school she participates in volleyball, Business Professionals of America, Fellowship of Christian Athletes and National Honor Society. Renville-Sibley Co-op Power salutes Gracie as the December Touchstone Energy Scholar of the month. More information about the Scholar of the Month program can be found on our website www.renville-sibley.coop under the Customer Service tab.



Gracie Slagter

Energy Audits Available

Renville-Sibley offers energy audits to all members. The audit includes a walk-through of your home, taking pictures with an infrared camera of any areas where cold air might be entering your home, along with a review of the energy consumption in your home. The cost of this audit is \$150. If the member makes improvements recommended in the follow-up report and submits invoices showing that \$150 or more was spent on these improvements, the charge will be refunded. Please contact the office at 800-826-2593 for more information or if you are interested in having an energy audit of your home.

Mark Your Calendar for Member Informational Meetings

Renville-Sibley holds member informational meetings each year throughout the service area. These meetings are held at various times, days and locations with the hope that if one day does work for a member to attend, another day will. All members are encouraged and welcomed to attend these meetings to learn more about Renville-Sibley and the electric industry. The 2020 schedule is as follows:

- Feb. 15 at 9 a.m. – Saturday – Community Center, Danube
- Feb. 17 at 6:30 p.m. – Monday – Athmann's Inn, Bird Island
- Feb. 18 at 9 a.m. – Tuesday – Lion's Den, Fairfax
- Feb. 20 at 1:30 p.m. – Thursday – Community Center, Sacred Heart

Save the Date!

Renville-Sibley's 82nd annual meeting will be held on Thursday, March 26, at the Island Ballroom in Bird Island. Watch for more information in upcoming issues of this newsletter. 624201

| Comparative Report | | | |
|-----------------------------|--------------------------|-------------------------------|-------------------------------|
| | Current Nov. 30, 2019 | One Year Ago Nov. 30, 2018 | 10 Years Ago Nov. 30, 2009 |
| Average Number of Consumers | 1,882 | 1,882 | 1,939 |
| kWhs purchased | 145,590,316 | 172,490,959 | 150,877,106 |
| Cost of purchased power | \$8,655,233.16 | \$10,294,458.24 | \$5,781,342.13 |



ENERGIZING COMMUNITIES

We're led by members like you. Which means we're not out to make money. Instead, we're building communities by listening to your needs. We're shaped by the people we serve.

REASONS TO LOVE YOUR ELECTRIC CO-OP

Delivering More than Just Electricity

Brenda Kleinjan

editor@sdrea.coop

From reliable energy to community involvement, there are a lot of reasons why co-op members love their electric cooperatives.

Co-Ops Are Local, Community-Focused Organizations

Co-ops have a rich history of serving their members and are facing the future with innovative ideas to help their members and grow their local communities.

Local people helping out. From billing clerks to line workers and every job in between, the people working at your local electric cooperative are the ones you'll see in your communities. They are serving on volunteer fire departments and as first responders, serving on school boards and county commissions, as ushers at church and as youth sports coaches.

Sioux Valley Energy employees get final instructions before embarking on their meal delivery routes.



Some cooperatives have launched employee community service days where local communities or organizations benefit from a day of service, whether it be a town clean up, restoring a rural cemetery, delivering meals to shut-ins or helping others in need.

Keeping Members Informed

Whether it's through this magazine, which reaches members each month or through social media channels like Facebook and Twitter or mobile apps like SmartHub, cooperatives continually strive to inform their member-owners about events and issues that matter. From a quick post or tweet about why the power may have blinked or celebrating the achievements of area youth, co-ops are communicating with their members and connecting them to their community. As storms approach, co-ops offer helpful tips for preparing for inclement weather and how to deal with the aftermath of storms.

Helping Members Save Money

Co-op demand response and load management programs have helped members save money for decades. And now, with interactive tools like SmartHub, an increasing number of co-op members are accessing information about their home's energy use right from their mobile device or computer. Several co-ops offer energy audits and other ways to reduce energy use.

Appliance rebates, loans for heating and cooling equipment and reduced rates for some energy use

are offered by some co-ops in the state. Check with yours to find out what programs could benefit you.

Diversifying Energy Resources

Cooperatives have a history of using an all-of-the-above approach to meeting members' energy needs. The first utility-scale wind project in South Dakota was built by co-ops and several co-ops have solar demonstration projects to help members learn about solar grid interconnection and other aspects of the resource.

Investing in Youth

When it comes to looking to the future, co-ops have the youth in their communities in mind. Each year, co-ops invest more than \$100,000 in scholarships for students pursuing further education at colleges or

technical schools. Dozens of students have the opportunity to go to Washington, D.C., for the annual rural electric youth tour, courtesy of their local electric cooperative. Several co-ops in the state send students on the four-day Youth Excursion to North Dakota each summer to explore energy careers and cooperatives. And throughout the school year, Co-ops in the Classroom and other safety demonstrations visit schools across the region to help younger students learn about using electricity wisely and how so be safe around it.

A participant on the 2019 Youth Excursion to North Dakota gives the view from the Antelope Valley Station power plant two thumbs up.



Co-op member service personnel receive training on blower door tests which can be a useful tool in a home energy audit.



December Board Meeting Highlights

The December board meeting was held on Thursday, Dec. 19, at 9 a.m. All board members were present. Others present were CEO DeeAnne Newville, Gene Allex and Lenae Wordes.

The board reviewed and approved the following items:

- Minutes of the November board meeting
- Operating and disbursement reports for the month of November
- Capital credits to estates
- Safety report for December
- Write off of accounts receivable
- Schedule A – Standard Pricing Guide
- Nominating Committee appointments
- AMI recommendations

- High level Statement of Operations review – YTD through November (unaudited)
- Organization activities
- East River update
- Basin Electric update
- NRECA update
- MREA update
- Line crew work in progress, equipment update and outage update
- Accounts receivable
- Christmas Open House
- Nominating Committee meeting
- Annual meeting

Please contact the Renville-Sibley office if you would like more information regarding the board meeting.

The board reviewed:

- Total new members for the month of November
- Reports from staff members as to the activities in their department. Items in the reports include:

Notice:

The January board meeting will be held on Monday, Jan. 27, at 9 a.m.

The February board meeting will be held on Monday, Feb. 24, at 9 a.m.

FREE Want Ad Service

Members can submit ads for the following categories: Giveaway, For Sale, For Rent and Wanted. Ads should be or are limited to no more than 15 words and must be received by the first of the month to be included in the following month's newsletter. Renville-Sibley reserves the right to edit content or exclude ads due to space restrictions. Ads will be run one time only unless resubmitted. Please complete the following information and mail to the Renville-Sibley Cooperative Power, PO Box 68, Danube, MN 56230.

Name: _____

Address: _____

Phone number: _____

Ad to be placed (limit of 15 words per ad)

Type of ad: ☐ Giveaway ☐ For Sale ☐ For Rent ☐ Wanted

Where's the Number?

Last month, Mrs. Vernon Beran found their member number in the newsletter. Congratulations! The credit will start at \$15 and increase by \$15 each month. Another number has been hidden in this newsletter. If you find your number and call the office by Feb. 3, you will receive this credit on your electric statement. Good luck in your search!



Outage Report

affecting 10 members or more

Date: 11-18-19

Time off: 1:48 p.m.

Time on: 4:05 p.m.

Substation: Cairo

Cause: Broken wire

Please contact Renville-Sibley's office for more details about these power outages.




Mission Statement

Renville-Sibley Cooperative Power Association will provide efficient, reliable electric energy and services to enhance the quality of rural living.

Wanted/For Sale

Wanted: Used side-by-side, good condition, no junk.

Daryl Wendt, Gibbon, Minn.
507-327-8101



When considering which generator to buy, decide what you can't live without when the power is out.

Shopping for a Generator? Do a Little Homework First

Safe Electricity

SafeElectricity.org

Generators are classified by how much power or watts they can produce. That wattage measurement is important because it determines how many devices you can power. According to *Consumer Reports* (CR), the typical home requires 5,000 watts to cover the basics.

When considering which generator to buy, decide what you can't live without when the power is out. Then add up the wattages to get an idea of how much power you will need.

For example, a refrigerator typically takes 600 watts to run; a sump pump requires 750 to 1,500 watts; a portable heater can take 1,500 watts; and lights can require from 60 to 600 watts (depending on how many you power and the size of your home).

Safe Electricity and Renville-Sibley Co-op Power offer background on four types of supplemental power sources:

Portable Generator

Because these usually run on gasoline, they are extremely dangerous since they can produce carbon monoxide (CO). Because of that, never run these indoors or in an enclosed space and always keep them at least 20 feet from your home when operating them. Additionally, do not use them in damp or wet conditions. Some newer models feature a built-in CO sensor that triggers an automatic shut-off feature if it detects CO buildup. Other advanced models are designed to emit less poisonous fumes; both of these safety features help to save lives. Prices range from \$400 to \$1,000.

Inverter Generator

This type of generator has a more complex engine than its portable cousin. Because of that, inverter generators usually cost more than portable versions. They are much quieter than portable generators since they throttle up and down to match demand (instead of running at constant full power). They also boast more advanced exhaust systems, which also helps with noise levels. Inverter generators typically cost \$500 to \$4,000 and if you pick this kind of generator, you should follow the same safety precautions you would with a portable version.

Standby Generator

This is the most expensive type of generator and models range from 5,000 to 20,000 watts. Standby generators are also the most convenient, since they are permanently mounted and they kick on automatically when the power goes out. They run on propane or natural gas and cost \$3,000 to \$6,000, not including installation. Installing them is definitely not something you can do yourself; they should be installed by an experienced electrician.

Portable Power Stations

These stations don't use gasoline or propane; instead they are powered by a battery that can be charged by electricity or by a solar panel. They cost more than traditional portable generators at \$750 to \$3,000. They are extremely quiet and they don't produce fuel emissions so you can use them indoors. The downside is they don't power as many appliances as portable generators and they don't run for an extended period of time.

For more information about electrical safety, visit SafeElectricity.org.

Nemo 500 Outhouse Races

NAJA Shrine Transportation Fund for Kids Benefits from Outdoor Event

Brenda Kleinjan

editor@sdrea.coop

We called it the Nemo 500 because it sounded good.

When one thinks of racing, cars, horses or motorcycles likely come to mind. But, in the Black Hills community of Nemo, outhouses – equipped with wheels, skis or both – are the vehicle of choice.

While each outhouse must be equipped with a seat with one hole, there are additional basic requirements in this competition designed to raise funds for the NAJA Shrine Kids Transportation Fund.

First, each outhouse will have a rider. And during the race, that rider will trade places with a teammate.

“There always has to be someone on the throne,” said Ervin “Red” Alspaw, a Shriner with the Oasis of Deadwood and one of the contacts for the race.

The outhouse must be at least five feet tall and the door (if there is one) has to stay open during the race.

The outhouse must have four walls and a roof and the team’s name must be on each of the walls.

“It’s a hoot,” said Alspaw.

Money raised at the event helps Shriners cover the transportation expenses of some 630 children in western South Dakota who seek care at Shriners Hospitals



A team prepares to race their outhouse in the 2017 competition.

nationwide.

“We called it the Nemo 500 because it sounded good,” said Troy Saye, race organizer and owner of the Nemo Guest Ranch where the event is held.

“We stepped it off a few years ago and it’s actually about 970 feet. You start at the restaurant and at midway everyone runs around the outhouse, retrieving a colored roll of toilet paper which must be placed in the correct order on a plunger.

Alliterations, euphemisms and creativity may make for memorable team names, but speed is the name of the game as the fastest team to complete the



Kids compete in the scoop shovel races.



The costumed Sesame Streak team poses with their People's Choice outhouse trophy after the 2016 race.

race is the winner.

Winners in each of the age divisions get an outhouse trophy hand-made by Troy and Willie Saye.

The Sayes created the event after a 2006 visit from Willie's cousin, shortly after they bought the Nemo Guest Ranch.

"He said he had to get home for an outhouse race. We didn't know what it was," said Troy. The couple researched the event and found that several other

states held races. They developed their rules for the Nemo event. Early races were held just for fun or to raise money for different organizations. The race has been a benefit for the NAJA Shrine Kids Transportation Fund for the last eight or nine years.

The creative names don't stop at the race team names. It takes a certain fortitude to dip a spoon into some of the entries in the chili cook-off contest where cooks serve up three gallons of chili with names like "Presidential Poopers Chili" and "Dave's Chunky Pork and Beef Chili."

Kids can compete in the Scoop Shovel Races, but competitors must provide their own scoop shovel.

If you're going, check-in for the three divisions is at 10 a.m. and race time is 1 p.m. Preregister your team by Feb. 1 to receive a T-shirt.

If you have a team but don't have

an outhouse to race in, contact the Nemo Guest Ranch to see if theirs is available.

Advice for first-time attendees? Arrive early, dress warm and be prepared for

a bit of a walk (late-comers have had to park a half-mile away from the event.)

Attendance at the event varies with the weather, Saye said. Crowds range from 1,000 people up to 2,400 people when the race time temperature was 53 degrees.

"You have got to see it to really enjoy it," said Saye.

"When we first started, we never imagined it would take off the way it did," said Saye.

Interested? Visit nemo500.com for more information or contact the Nemo Guest Ranch at 605-578-2708.

When we first started, we never imagined it would take off the way it did.

The Rules

OUTHOUSE RACE RULES and STRUCTURE

- 1) Outhouse can only be human powered. No electric-, solar- or gas-powered assistance. The outhouse must have four walls, roof, doorway and seat with at least one hole. It may have a door, but the door must remain securely open during the race.
- 2) The outhouse must be a minimum of nine square feet at the base and a maximum overall width not to exceed six feet (including grasping or pushing devices). A minimum height of five feet from the floor to the highest point of the roof.
- 3) Any number and size of wheels or skis may be used.
- 4) Any device for pushing or pulling the outhouse may be used except ropes. All pushing or pulling devices must be secured solid.
- 5) Outhouses may be built from any material but glass and must be structurally sound.
- 6) Each entry must have an outhouse name that is to be displayed on each side of the structure. Sponsors' names may be displayed anywhere on the outside.
- 7) There will be three age divisions. (Age divisions will be determined by average team ages. Add all team members' ages and divide by the number of team members.)
 - Division 1: Ages 12 to 25
 - Division 2: Ages 26 to 45
 - Division 3: Ages 46 and over

Good to know:

Teams consist of two to five people, one of which must ride inside the outhouse.

Safety gear including helmets are required for all members and ice cleats are recommended.

Outhouse passengers must be 12 years old or older. Handles or seatbelts are required for the outhouse passengers.

Teams' dress is to reflect the theme of their entry.

Teams make a mandatory pit stop at mid race for a fire-drill. Each member must run around the outhouse three times and the rider must switch places with one of the pushers. Each team member will be required to place a color-coded roll of toilet paper on a color-coded plunger in order of color scheme provided at race time. The race will be timed from start to finish, the objective is to get the lowest time to win.

Scholarships to be Awarded

Renville-Sibley Cooperative Power Association will be offering \$5,000 in scholarship money to students in this region. The scholarships are for the 2020-2021 school year.

Renville-Sibley is allocated a \$1,000 scholarship from Basin Electric to be awarded at the discretion of the cooperative. Another \$1,000 scholarship is from Renville-Sibley.

A committee of Renville-Sibley board members, as well as an employee of the cooperative, will select the recipients of the \$1,000 Basin Scholarship and the \$1,000 Renville-Sibley Scholarship. These scholarships will be awarded based on a combination of SAT/ACT scores and overall grade point average, work experiences, participation in school and community activities, the personal statement of career goals and the written recommendation by a third party. Additional consideration will be given to applicants interested in a position related to the electric industry for the Renville-Sibley scholarship.



The remaining three \$1,000 scholarships are distributed from uncashed capital credit checks and is awarded by a random drawing at the annual meeting from the remaining completed applications.

All scholarship applicants must be U.S. citizens and a dependent of a member of Renville-Sibley Cooperative. They must be a high school senior who plans to enroll as a full-time student in an undergraduate course of study at an accredited two-year or four-year college, university or vocational/technical school. Applications will be accepted until Feb. 20, 2020. Winners will be announced to the public at the cooperative's annual meeting on March 26, 2020.

**\$5,000 in
scholarships
are available
to area
students.**

Renville-Sibley participates with other Minnesota electric cooperatives in sponsoring the continuation of the Jay York Scholarship. York was a Lake Wilson farmer who dedicated his life to the rural electric program and to education in rural Minnesota. He was the first Minnesotan to serve as president of the National Rural Electric Cooperative Association (NRECA). Scholarships are available each year from this program and are selected by random drawing. Each participating cooperative may submit one candidate's name for the drawing. The amount of this scholarship is determined based on the number of cooperatives that participate in the program. Over the past 22 years,

Renville-Sibley has awarded nine Jay York scholarships.

Only one completed application is required for an applicant to be considered a candidate for any of the available scholarships. Incomplete applications will be excluded.

For more information and a scholarship application form, contact Renville-Sibley at 1-800-826-2593 or 826-2593. Application forms are also available at our website www.renville-sibley.coop.

RECIPES NEEDED FOR

THE COUNTRY COOKIN' cookbook

Your recipe could be featured in the 36th volume of East River Electric's Country Cookin' cookbook!

Help us create another great cookbook by submitting your favorite recipes as well as recipes for the cookbook's "Light Side" section.

Submit recipes via email to kstone@eastriver.coop, fax to 605-256-8057, or contact your local cooperative for more information.

Submission deadline is January 27, 2020.



Renville-Sibley Co-op Power

Rebates and Incentives

Incentives:

- 5 percent interest loans available for equipment, service upgrade and installation of qualified heat systems (up to \$15,000 for up to five years with approval)
- Minimum qualifications must be met for all marketing programs

Non Commercial Electric Heat Rebates:

(replacement incentive offered after 10 years)

- \$800 Geothermal Heat Pump
- \$800 Air-to-Air Heat Pump
- \$200 Mini-Split/Ductless Heat Pump (must be ENERGY STAR®-certified)
- \$400 Non ENERGY STAR® Heat Pump

To qualify for the geothermal and air-to-air heat pump, equipment must be new, at least two ton and a HSPF greater than or equal to 8.5. Contact the office for commercial, industrial or agricultural rebate information:

Special Discount Rates:

Separately metered electric heat, controlled A/C and controlled natural air grain drying is only 6.0 cents/kWh.

Contact the office for details. – There is a \$2.50 per month charge for all discount meters.

Electric Water Heater Rebates:

(replacement incentive offered after 10 years)

- \$6/gallon – Marathon® Lifetime Warranty Units
- \$100 bonus rebate for new home or fossil fuel conversion
- \$6.50 monthly credit for controlled electric water heater

Due to space constraints, Renville-Sibley will only stock 100-gallon grid enabled water heaters. Warranty replacements for 50-gallon water heaters can be handled by places such as Menards or Home Depot. Renville-Sibley will offer warranty replacements for 85-gallon water heaters.



Nonresidential Efficient Lighting Replacement Program:

Renville-Sibley offers a rebate of \$.30/watt saved for the replacement of inefficient lighting systems in nonresidential installation. The maximum rebate amount is

\$1,000 per member per calendar year and a maximum of up to 50 percent of the total project cost. The minimum rebate is \$50.

Energy Star® Rebates:

- \$100 – Refrigerator (requires proof of disposal of existing unit)
- \$200 – Central Air-Conditioner
- \$50 – Dishwasher
- \$50 – Clothes Washer
- \$50 – Clothes Dryer
- \$100 – Freezer
- \$25 – Dehumidifier
- \$25 – Room Air-Conditioner
- \$5 – LED Light Bulb (bulb must be a minimum of 8 watts, maximum of 20 bulbs per location)
- \$35 – Disposal rebate for refrigerator or freezer currently in service (requires proof of disposal)

(ENERGY STAR® Rebates are capped annually; contact the office to verify status of program.)



All rebate forms can be found at www.renville-sibley.coop
For more information, please contact us at 800-826-2593 or 320-826-2593.

December 15-March 31

South Dakota snowmobile trails season, Lead, SD, 605-584-3896

January 24-25

Pro Snocross Races, Deadwood, SD, 605-578-1876

January 25-26

Dakota Territory Gun Collectors Gun Show, National Field Archery Building, Yankton, SD, 701-361-9215

January 31-February 2

12th Annual Winterfest of Wheels, Convention Center, Sioux Falls, SD, 605-231-3100

January 31-February 2

Winterfest, Lead, SD, 605-584-1100

January 31-February 9

Annual Black Hills Stock Show & Rodeo, Rapid City, SD, 605-355-3861

February 1

Lake Hendricks Fishing Derby, Hendricks, MN, 507-828-2113

February 1

Living History Fair, Brookings Renegades, LATI, Watertown, SD, 605-693-4589, dhuebner@itctel.com

February 1-2

Dakota Territory Gun Collectors Gun Show, Dakota Event Center, Aberdeen, SD, 701-361-9215

February 8-9

Dakota Territory Gun Collectors Gun Show, Convention Center, Sioux Falls, SD, 701-361-9215

February 10-16

Frost Fest, Brookings, SD, 605-692-6125



Photo courtesy, travelouthdakota.com

February 14

Snow Ball, Brookings, SD, 605-692-6700

February 15-16

Dakota Territory Gun Collectors Gun Show, Ramkota Hotel, Pierre, SD, 701-361-9215

February 21

KORN and Breaking Benjamin, Rapid City, SD, 605-394-4111

February 21-22

Mardi Gras Weekend, Deadwood, SD, 605-578-1876

February 22

Cabin Fever Games, Yankton, SD, 605-665-8994

February 22-23

48th Annual Farm, Home & Sports Show, Ramkota Hotel, Pierre, SD 605-224-1240

February 26

The Harlem Globetrotters, Rushmore Plaza Civic Center Barnett Arena, Rapid City, SD, 605-394-4111

February 27-March 1

35th Annual SD State Dart Tournament, Rushmore Plaza Civic Center, Rapid City, SD, 605-394-4111

March 14-15

Dakota Territory Gun Collectors Gun Show, Davison County Fairgrounds, Mitchell, SD, 701-361-9215

March 18, June 11, August 13 and October 8

Kids Mystery Dinner Theater, Brookings, SD, 605-692-6700

March 20-21, 27-28

Annual Schmeckfest, Freeman, SD, 605-925-4237

March 21-22

Dakota Territory Gun Collectors Gun Show, Codington County Ag Building, Watertown, SD, 701-361-9215

March 28

Annual Ag Day at the Washington Pavilion, Sioux Falls, SD, 605-367-6000

April 3-4

Forks, Corks and Kegs Food, Wine and Beer Festival, Deadwood, SD, 605-578-1876 or 800- 999-1876

April 17-19

First Dakota Classic Archery Tournament, Yankton, SD, 605-260-9282

April 18

Design Challenge, Sioux Falls, SD, 605-731-2348

April 25

River Rat Marathon, Yankton, SD, 605-660-9483

To have your event listed on this page, send complete information, including date, event, place and contact to your local electric cooperative. Include your name, address and daytime telephone number. Information must be submitted at least eight weeks prior to your event. Please call ahead to confirm date, time and location of event.