



A Touchstone Energy® Cooperative



RENVILLE-SIBLEY
DECEMBER 2024 VOL. 25 NO. 8

COOPERATIVE CONNECTIONS



Hurricane Aid

**Linemen Help
Restore Power After
Hurricane Helene**
Pages 8-9

First Responders
Pages 12-13

Strengthening Our Foundation: Updating Our Cooperative's Bylaws and Articles of Incorporation



Roger Manthei
Board Chair

As your Board Chair, I want to highlight something essential to the strength and success of our cooperative: our Articles of Incorporation and Bylaws. These foundational documents are the backbone of how we operate, ensuring we stay true to our values, meet our members' needs, and navigate an evolving energy landscape effectively.

Just as we periodically review our personal finances or family plans, it's equally important for our cooperative to review

its governing documents. Our Articles of Incorporation and Bylaws guide us, helping to ensure transparency and accountability in decision we make. As a member-owned and member-governed organization, these documents belong to all of us.

This year, a review and updates are necessary, as we must revise our Articles of Incorporation to reflect the address of our new facility. While the address update is legally required to maintain

compliance, it also provides an opportunity for a thorough review of our governing documents. This review allows us to carefully consider any other parts of the documents that may need attention. Naturally, we'll also address minor updates, such as grammar corrections or slight wording modifications, to improve clarity. As part of this process, the board will also make recommendations to adjust language that will require careful consideration by the membership.

To ensure a clear and fair voting process, we will present more than one ballot. This way, members will not feel pressured to approve broader proposed changes simply because the address update is required. One ballot will focus specifically on the necessary address change and minor editorial adjustments to keep our documents accurate and consistent.

All proposed bylaw changes will be featured in the next three editions of our newsletter. We'll also cover these updates at our member informational meetings, and full details will be included with the ballot itself. These ballots will be sent to you in March, alongside the Board of Directors election ballots, as part of the mailing for our upcoming Annual Meeting on March 27, 2025.

Your voice and involvement are essential as we work together to keep our cooperative strong, transparent, and ready for the future. Thank you for being an active part of this process.

Holiday Closings

The Renville-Sibley office will be closed on the following holidays:

Thanksgiving - November 28

Christmas - December 25

New Year's Day - January 1 & 2

Operation Round Up

The Operation Round Up Board of Trustees met on Tuesday, October 15. The following donations were approved:

Koselig Academy - \$550 • Funds are needed to update the heating system and certain electrical components so the space is more efficient to benefit and modernize the learning environment.

Renville County West School Foundation - \$550 • Funds needed to enhance the educational, invest in opportunities that would not otherwise be possible to expand lifetime experiences that attend RCW and be able to fulfill teacher grant requests.

MN Brain Injury Alliance - \$550 • Funds used to create a better future through brain injury prevention, advocacy, education, research, support, and enhance the quality of life for all people affected by brain injuries.

Friends of the Arts - \$550 • Funds needed to purchase items such as humidifiers, fans, vacuum, floor cleaning systems, and refrigerators to help furnish the local theater. This will be a venue for community members to gather for performances, art galleries, and meeting space when needed.

Park Moms of Renville - \$1,000 • Funds are needed to complete Phase 2 of the North park project which will better serve the families in town and other communities who enjoy park play with a variety of equipment not found in other parks.

The next meeting will be held Tuesday, January 7, 2025 at 3 p.m. The deadline for applications is Tuesday, December 31, 2024. If your non-profit organization has a project or event that would benefit the community, Operation Round Up funds may be available to help your group reach its goal.

Applications for donations can be found at rscpa.coop/operation-round. Contact the office at 320-826-2593 for more information.

Notice:

The November board meeting will be held on
Tuesday, November 26 at 8 a.m.

The December board meeting will be held on
Thursday, December 19 at 9 a.m.

Annual Holiday Open House

Mark your calendar! Renville-Sibley will be hosting our annual Holiday Open House on Thursday, December 5th from 10 a.m. to 2 p.m. at our new facility, 515 Hwy 212 W in Danube. Those in attendance can register to win a \$50 energy credit to go towards their electric bill. While you are in town, be sure to stop over and visit Danube Upholstery and Minnwest Bank who will be having their open house that day as well!

COOPERATIVE CONNECTIONS

RENVILLE-SIBLEY CO-OP POWER

(USPS 019-074)

Board of Directors

Roger Manthei - Chair
Whitey Hinderman - Vice Chair
Wayland Zaske - Secretary/Treasurer
Jeff Boersma
Gary Eekhoff
Vicky Firl
Alan Neyers
Gary Peterson
Helen Ruebel

Renville-Sibley Employees

Gene Alex - Line Superintendent
Brian Athmann - Journeyman Lineman
Shawn Beckler - Crew Chief
Mike Benson - Journeyman Lineman
Brad Braulick - Crew Chief
Nick Bruns - Technology Manager
Anthony Carruth - Journeyman Lineman
Amy Ervin - Executive Admin and HR
Brayden Fischer - Journeyman Lineman
Carren Frank - Cooperative Support Specialist
DeeAnne Norris - CEO
Clint Olson - Journeyman Lineman
Marc Snyder - Cooperative Analyst
Jill Woods - Member Services Professional

RENVILLE-SIBLEY COOPERATIVE CONNECTIONS is published monthly by Renville-Sibley Co-op Power Association, 515 Highway 212 W, Danube, MN, 56230 for its members. Electric cooperative members devote 75 cents from their monthly electric payments for a subscription. Periodicals Postage Paid at Danube Post Office, Danube, MN 56230 and at additional mailing offices. POSTMASTER: Send address changes to: Renville-Sibley Cooperative Connections, PO Box 68, Danube, MN 56230; Telephone (320) 826-2593; Toll Free 1-800-826-2593; Fax (320) 826-2679.

Web site: www.rscpa.coop

This institution is an equal opportunity provider and employer.

ENJOY A SAFE HOLIDAY SEASON

From late November to mid-January, when families gather, parties are scheduled and travel spikes, safety should be top of mind. Following is tried-and-true advice to ensure your family remains safe and injury-free throughout the season.

Traveling for the Holidays? Be Prepared

If you're traveling this year, be sure your vehicle is in good running condition, get plenty of rest and be prepared for any emergency. Traveling by car during the holidays has the highest fatality rate of any major form of transportation based on fatalities per passenger mile. Hundreds of people die every year in crashes on New Year's Day, Thanksgiving Day and Christmas Day, according to Injury Facts. Alcohol impairment is involved in about a third of these fatalities.

Stay safe on the roads over the holidays – and every day:

- Prepare your car for winter and keep an emergency kit with you.
- Get a good night's sleep before departing and avoid drowsy driving.
- Leave early, planning ahead for heavy traffic.
- Make sure every person in the vehicle is properly buckled up no matter how long or short the distance traveled.
- Put that cell phone away; many distractions occur while driving, but cell phones are the main culprit.
- Practice defensive driving.
- Designate a sober driver to ensure guests make it home safely after a holiday party; alcohol or over-the-counter, prescription and illegal drugs can cause impairment.

Decorate Safely

Decorating is one of the best ways to get in a holiday mood, but emergency departments see thousands of injuries involving holiday decorating every season.

When decorating follow these tips from the U.S. Consumer Product Safety Commission:

- Keep potentially poisonous plants – mistletoe, holly berries, Jerusalem cherry and amaryllis – away from children.
- If using an artificial tree, check that it is labeled “fire resistant.”
- If using a live tree, cut off about two inches of the trunk to

expose fresh wood for better water absorption, remember to water it, and remove it from your home when it is dry.

- Place your tree at least three feet away from fireplaces, radiators and other heat sources, making certain not to block doorways.
- Avoid placing breakable ornaments or ones with small, detachable parts on lower tree branches where small children can reach them.
- Only use indoor lights indoors and outdoor lights outdoors, and choose the right ladder for the task when hanging lights.
- Replace light sets that have broken or cracked sockets, frayed or bare wires or loose connections.
- Follow the package directions on the number of light sets that can be plugged into one socket.
- Never nail, tack or stress wiring when hanging lights, and keep plugs off the ground away from puddles and snow.
- Turn off all lights and decorations when you go to bed or leave the house.

Source: National Safety Council



**“Don’t Spill Water on Electronics...
It Could Start a FIRE!”**

Bethany Langworthy, Age 9

Bethany Langworthy warns readers to be careful with water around electronics. Thank you for your picture, Bethany! Bethany's parents are Kristina and Edward Langworthy, members of West River Electric.

Kids, send your drawing with an electrical safety tip to your local electric cooperative (address found on Page 3). If your poster is published, you'll receive a prize. All entries must include your name, age, mailing address and the names of your parents. Colored drawings are encouraged.

Family FAVORITES

CREAM CHEESE AND CUCUMBER SPREAD DIP

Ingredients:

1 large cucumber, grated
1 tsp. onion, grated
8 oz. pkg. cream cheese
3/4-1 cup mayonnaise
Salt and pepper to taste

Method

Grate cucumber and onion on several thicknesses of paper towels, squeeze out all the water. Place in a bowl. Blend other ingredients, adding enough mayonnaise to make it a spreading consistency. Serve with crackers or chips.

Mary Ann Klarenbeek
Harrisburg, S.D.

GRANDMA GRACE'S FROZEN FRUIT SALAD

Ingredients:

8 oz. Cool Whip
1 tbsp. lemon juice
1 cup sour cream
3/4 cup sugar
Dash of salt

*Mix all thoroughly until
sugar is dissolved.*

9 oz. can pineapple, crushed
and drained
Small jar maraschino cherries
(halve or chopped if desired)
2 sliced bananas (halve or
quarter slices if desired)
1/4 cup chopped walnuts

Method

Mix thoroughly. Pour into 8x8 or 9x9 container. Cover and freeze. Thaw 10-15 minutes to allow cutting into serving portions.

My mother, Grace Alley, first made this salad for holiday meals. It has become a family favorite, and we always have it for one of our holidays.

Mary Harris
Glad Valley, S.D.

LEMON ROSEMARY GLAZED HAM

Ingredients:

1 bone-in spiral-cut ham,
about 10 lbs.
1 1/4 cups honey, divided
2 tsp. lemon extract
1 1/4 tsp. whole rosemary
leaves, crushed, divided

Method

Preheat oven to 325°F. Place the ham on its side in roasting pan. Mix 1 cup of the honey, 1 1/2 tsp. of the extract and 1 tsp. of the rosemary in small bowl until well blended. Brush 1/2 of the honey mixture over ham, gently separating the slices so mixture can reach middle of ham. Cover loosely with foil.

Bake 1 hour, basting occasionally with pan drippings. Remove foil. Brush with remaining honey mixture. Bake 45 minutes longer.

Meanwhile, mix remaining 1/4 cup honey, 1/2 tsp. extract and 1/4 tsp. rosemary in small bowl. Serve with ham along with the pan drippings.

McCormick.com

Please send your favorite recipes to your local electric cooperative (address found on Page 3). Each recipe printed will be entered into a drawing for a prize in December 2024. All entries must include your name, mailing address, phone number and cooperative name.

Stay Safe and Warm: Your Winter Home Readiness Guide

Preparing your home for winter involves several key steps to ensure safety, efficiency and warmth. Here are top tips to help you prepare before the temperatures drop and a few ways to stay safe if a power outage leaves you snowbound.

Inspect your heating system

- Have your heating system professionally serviced.
- Replace air filters if needed.
- Ensure vents and radiators are unblocked for efficient heat distribution.

Prepare pipes and water supply

- Insulate exposed pipes to prevent freezing.
- Drain and shut off outdoor faucets and irrigation systems.
- Know the location of your water shut-off valve in case of emergencies.

Maintain smoke and carbon monoxide detectors

- Replace batteries in smoke and carbon monoxide detectors.
- Test detectors to ensure they are functioning properly.
- Prepare your home's exterior
- Clear gutters and downspouts of leaves and debris to prevent ice dams.
- Trim trees and bushes away from the house to prevent damage from heavy snow.
- Ensure downspouts extend away from your home's foundation.
- Drain and store garden hoses to prevent freezing.
- Service and store outdoor equipment such as

lawnmowers and trimmers.

- Gather winter tools such as snow shovels and ice melt.

Increase home energy efficiency

- Seal gaps and cracks around windows and doors with weatherstripping or caulk.
- Set ceiling fans to rotate clockwise to circulate warm air.
- Lower your thermostat a few degrees to save on heating costs.

Stock emergency supplies

At home, have enough nonperishable food and water for 72 hours in case of power outages or severe weather. Experts suggest storing one gallon of water per person per day.

Include these essentials in your emergency kit:

- First-aid kit
- Flashlights and batteries
- Warm clothing
- Blankets
- Phone chargers and backup charger sources

Gather important documents, medical supplies/medicines and medical records. Don't forget your pets. Make sure you have enough supplies for them as well.

What to do if the power goes out

Winter weather is unpredictable, with high winds, whiteouts and ice storms. These conditions can cause hazardous roads and power outages.

If the electricity goes out due to a winter storm, you might be in for

a prolonged power outage as crews work through the harsh weather to get the power back on.

If this happens, contact your electrical utility as soon as you can so they know you have lost power.

Other actions you can take to stay safe are:

- Avoid travel. Stay inside and dress warmly in layered clothing.
- Place a draft block at the bottom of doors to minimize cold drafts from entering the house.
- When using an alternative heat source, follow operating instructions and be sure to ventilate properly.
- Keep grills, camp stoves and generators out of the house, basement and garage.
- Use a tarp and portable canopy when using a portable generator if conditions are damp or wet.
- Move fuel-powered generators at least 20 feet away from the house.
- Keep a close eye on the temperature in your home. Infants and people over the age of 65 are often more susceptible to the cold. You may want to stay with friends or relatives or go to a shelter if you cannot keep your home warm.

For more information on keeping your family safe during and after a winter storm, visit [SafeElectricity.org](https://www.SafeElectricity.org).

What To Do in Case of a Power Outage

The weather can be challenging at times for our members as well as Renville-Sibley. While the cooperative hopes it will never happen, Mother Nature can cause damage to our power lines resulting in a power outage.

If you experience a power outage, please contact the office at 320-826-2593 or 800-826-2593. During business hours, your cooperative will do our best to answer as many calls as our phone system allows. If the number of calls coming into the office is overwhelming, the calls will be transferred to Cooperative Response Center (CRC) in Austin, MN.

After hours, all calls are transferred to CRC. Depending on the extent of the storm and the volume of calls coming into CRC, you may reach a live operator, or you may go into their automated system. It is helpful to your cooperative and CRC to have your phone number correct in Renville-Sibley's database when reporting an outage. Members are asked to review the phone numbers printed on the bill statement for accuracy and notify the cooperative if a change should be made to this contact information.

You also have the option to send a text message to report an outage. To sign-up for this feature, please visit our web site www.rscpa.coop and click on the Setup Text Outage Reporting in the middle of the home page. You will be asked a series of questions to get this service set up. Contact the office if you have any problems.

Remember, during times of large power outages, tune in to the following radio stations for updates on the status of the power outage: KLGR, KOLV, Q102, KWLM and KDJS.

Ready Your Home FOR WINTER

Prepare your home for winter now to ensure safety, efficiency and comfort. Here's a checklist you can use.



INSPECT HEATING SYSTEM:

- Have your heating system professionally serviced.
- Replace air filters if needed.
- Ensure vents and radiators are unblocked for efficient heat distribution.

TEST AND MAINTAIN SMOKE AND CARBON MONOXIDE DETECTORS:

- Replace batteries in smoke and carbon monoxide detectors.
- Test detectors to ensure they function properly.

PREPARE PIPES AND WATER SUPPLY:

- Insulate exposed pipes to prevent freezing.
- Drain and shut off outdoor faucets and irrigation systems.
- Know the location of water shut-off valve in case of emergency.

PREPARE YOUR HOME'S EXTERIOR:

- Clear gutters and downspouts to prevent ice dams.
- Trim trees away from the house to avoid damage.
- Ensure downspouts extend away from the foundation.
- Service and store equipment such as lawnmowers and trimmers.
- Gather winter tools such as snow shovels and ice melt.

INCREASE HOME ENERGY EFFICIENCY:

- Seal gaps at windows and doors with weatherstripping or caulk.
- Set ceiling fans to rotate clockwise to circulate warm air.
- Lower your thermostat a few degrees to save on heating costs.

Learn more at:  [SafeElectricity.org](https://www.SafeElectricity.org)



HURRICANE AID

Linemen Help Restore Power After Hurricane Helene

Jacob Boyko

jacob.boyko@sdrea.coop

Linemen from five of South Dakota's rural electric cooperatives traveled to the Southeastern U.S. in October to help restore power along Hurricane Helene's path of destruction.

The 18 linemen left Oct. 2 for Pickens, South Carolina, where Blue Ridge Electric Cooperative faced over 64,000 meter outages and more than 800 broken poles in Helene's aftermath.

Zach Hansen, a lineman from West River Electric Association, didn't think twice before he volunteered to go along.

"It's just the co-op way," he said. "There are people in need down there who lost their houses – lost their lives – and this is something we know we can do to help. It's kind of a once-in-a-lifetime opportunity."

The linemen stayed at a crowded base camp with dozens of other utility workers from all across the country. They slept on cots in a large, open army-sized tent, but with their busy schedules, they didn't spend

much time there anyway. Most days, the linemen woke at 5:30 a.m. for breakfast and worked in the field until supper at 8 p.m.

The work also presented unfamiliar challenges for the linemen; each time the crew needed to repair damaged infrastructure, they'd first have to start the labor-intensive process of clearing through debris and trees toppled by Helene's heavy wind gusts.

"When we have blizzards and ice storms in South Dakota, it's hard work – and you're trying to stay warm," Hansen explained. "But out here, there's a lot more chainsaw work and fixing wire breaks. It's not just straight miles of line lying down like we're used to at home."

By Oct. 9, fewer than 1,000 meters in Blue Ridge Electric territory remained offline, and the South





Dakota crews were dismissed to begin the 1,200-plus mile journey home.

But as the South Dakota convoy – which included bucket trucks, skid steers and ATVs – moved north, another call came in.

Jefferson Energy Cooperative in Wrens, Georgia, also faced catastrophic damage to their distribution lines, with 100% of their service territory without power after the storm. On Oct. 9, as South Dakota's linemen were driving home from South Carolina to reunite with their families, still over 10,000 homes and businesses remained without power.

Just like before, South Dakota's rural electric cooperatives answered the call.

"When our line superintendent called me that morning and asked me how we felt about going to Georgia, I said, 'well, we're right here, so we might as well go in and help,'" Bon Homme Yankton lineman Gunnar Dally said. "If they need help, we're more than willing to come."

The stop in Wrens delayed the linemen's return home by about a week, but the appreciation from the communities helped keep spirits high.

"When we were on breaks, there were people stopping to thank us for helping," Dally said. "A lot of them were very surprised when we said we were from South Dakota."

Hansen recognized another subset

of heroes: the families.

"The unsung heroes of storm jobs are the people we leave behind," he said. "My wife is at home with six kids taking care of the ranch while I'm gone. If we didn't have those people, we couldn't go out and do the things we needed to do. They are the real heroes."

SDREA General Manager Steve Barnett thanked the linemen for volunteering to help with the storm restoration efforts and for embodying

the values of South Dakota's rural electric cooperatives.

"These 18 linemen gave up time at home with their families to help people in need they've never met in a place they've never been," Barnett said. "Their selfless actions reflect what we stand for as a family of cooperatives, as South Dakotans, and as fellow Americans. We thank them for their work, their spirit and their dedication to keeping the lights on – at home, and in South Carolina and Georgia."



Are You Interested in a New Adventure?

Renville-Sibley Cooperative Power Association is beginning to plan for the 87th Annual meeting of the membership that will be held on March 27, 2025 at the Redwood Area Community Center in Redwood Falls, Minnesota. Three (3) directors will be elected during that time, each for a 3-year term.

The First District, consisting of the townships of Cornish, Severance and Moltke in Sibley County; the townships of Ridgely and West Newton in Nicollet County; and the townships of Cairo, Wellington, Martinsburg, Camp, Bandon and Palmyra in Renville County is represented by Alan Neyers, Whitey Hinderman and Vicky Firlle. Whitey Hinderman's term will expire in 2025.

The Second District, consisting of the townships of Honner and Delhi in Redwood County; and the townships of Beaver Falls, Flora, Henryville, Birch Cooley, Norfolk, Melville, Bird Island and Kingman in Renville County is represented by Helen Ruebel, Wayland Zaske and Jeff Boersma. Wayland Zaske's term will expire in 2025.

The Third District, consisting of the townships of Roseland and Holland in Kandiyohi County; Rheiderland in Chippewa County the townships of Troy, Winfield, Emmet, Crooks, Sacred Heart, Hawk Creek, Ericson and Wang in Renville County is represented by Gary Eekhoff, Gary Peterson and Roger Manthei. Gary Eekhoff's term will expire in 2025.

As stated in the Renville-Sibley by-laws, the following is the Qualifications and Tenure for the position of Director:

Each director shall be a member

of the Cooperative and shall be elected by the members within their respective district at the annual meeting of the members for a term of three years. No member shall be eligible to become or remain a director or to hold any position of trust in the Cooperative who is not a bona fide resident in the area served by the Cooperative, or who is in any way employed by or financially interested in a competing enterprise or a business selling electric energy or supplies to the Cooperative, or a business primarily engaged in selling electrical or space heating/cooling appliances, fixtures, or supplies to the members. When a membership is held jointly by two or more persons, including husband and wife, only one of such joint tenants may be elected a director, provided, however, that neither one shall be eligible to become a director, unless all shall meet the qualifications herein set forth.

Director qualifications required for service to the cooperative shall include:

- A. Must be an individual and must be at least 18 years of age.
- B. Must be competent and able to execute a contract.
- C. Must not have been convicted of a felony or gross misdemeanor during the preceding 5 years prior to becoming a director for the Cooperative or during the period while serving as a director.
- D. Must have a high school diploma or equivalent.
- E. Must make a reasonable

effort to become and remain knowledgeable about special issues regarding electric cooperatives by attending training, workshops and seminars.

- F. Must attend at least three-fourths (3/4) of all monthly scheduled board meetings during any twelve (12) month period.

Upon becoming a candidate for and/or to remain a Director, an individual must complete an annual conflict of interest disclosure form, approved by the Board of Directors. All Directors and/or Director candidates must comply with or meet the following conflict of interest qualifications:

- A. Shall not be a close relative of an existing Director, employee, agent or representative of the Cooperative other than an existing Director who will cease being a Director upon the candidate assuming office;
- B. Within 5 years immediately prior to becoming a Director, shall not have been a Cooperative Officer, employee, agent or representative of the Cooperative or any subsidiary or affiliated company;
- C. Shall not be employed by, materially affiliated with, nor share a material financial interest with any current Director;
- D. Shall not be engaged in any business, nor employed by, nor materially affiliated with, nor have a material financial interest in any individual or entity that:

1. Is regularly, directly, and substantially competing with the Cooperative or any other entity that the Cooperative controls or in which the Cooperative owns a majority interest (Cooperative Subsidiary).
2. Is regularly selling goods and services to the Cooperative or the Cooperative Subsidiary.
3. Possesses a substantial conflict of interest with the Cooperative or the Cooperative subsidiary.

E. A former Director is ineligible for employment by the Cooperative for 5 years following the end of the tenure as a Director.

As a Director, the member agrees to:

- Abide by, promote and uphold the Articles of Incorporation and By-laws, both of which can be found on our website, and Policies of Renville-Sibley Cooperative Power Association.
- Attend regular and special Board meetings of the Cooperative.
- Attend, when appointed, committee meetings of the Cooperative.

If anyone should decide to seek candidacy for the board of directors, there are many rewards to be enjoyed when elected. A director has the opportunity to demonstrate their leadership quality and increase their knowledge within the cooperative business environment and the electric industry. As a director, this person could play a significant role in the future development of Renville-Sibley Cooperative Power Association.

A director also has a very important responsibility which is to uphold and abide by the bylaws of the cooperative.

Directors are to act as the trustees for the assets of the cooperative and are assigned the duties of formulating, approving and reviewing the policies that provide guidelines for the cooperative.

The board is responsible for sending representatives to the affiliated association meetings that often include voting requirements. They include East River Electric Power Cooperative, Minnesota Rural Electric Association, Basin Electric Power Cooperative, National Utilities Cooperative Finance Corporation, CoBank, Cooperative Network and the National Rural Electric Association.

Directors attend seminars and meetings of several organizations to learn about the industry. Directors are asked to lobby and remain informed on legislative issues that could impact this industry and/or the cooperative way of doing business. The Board meets monthly and reviews financial reports, work plans, annual audits, planning documents and evaluates the cooperative operations while approving budgets and purchases.

Most of all, a director should be available to visit with their constituents and have a genuine spirit of helping others at all times.

Board meetings are typically held on the fourth Tuesday of every month, beginning at 9:00 a.m. in December, January and February and beginning at 8:00 a.m. the rest of the year. Board meetings will be held in person or via Zoom. The estimated time needed to be committed annually is approximately 30 days which includes monthly meetings and committee assignments. Directors are compensated per diem for their time as well as all personal expenses.

If you are interested in becoming a candidate for the Renville-Sibley Board of Directors, contact the Renville-Sibley office at 1-800-826-2593 before January 6th for further information.

FOR SALE:

Grass fed, grass finished beef. Burger-Steak-Roast Individual. Call for pricing.

Dave Pastoors
Olivia, MN 56277
320-522-4851

WANTED:

Skid loader – any year, any size. In good condition.

Denny Hanlon
Franklin, MN 55333
320-212-3803

OUTAGE REPORT:

Affecting 10 members or more

Date: 9-13-24
Time off: 2:49 PM
Time on: 5:59 PM
Substation: Emmet
Cause: Farm Equipment

Please contact Renville-Sibley's office for more details about these power outages.



STAYING SAFE

First responders put out a fire near Belle Fourche.
Photo submitted by Butte Electric Cooperative.

Butte Electric Cooperative Connects With First Responders

Frank Turner

frank.turner@sdrea.coop

October marks First Responders Month, a time to honor the dedication and courage of those who rush toward danger to keep their communities safe. This fall, electric cooperatives across the country expressed their gratitude to these everyday heroes who are always prepared to protect lives and the essential infrastructure that supports local neighborhoods.

Day or night, regardless of the weather, first responders answer the call, whether it's battling a blaze or responding to a medical emergency. When it comes to keeping the community safe, their collaboration with local electric co-ops is key for both local residents and the first responders themselves. Together, they work to ensure that emergencies are managed quickly, effectively and, most importantly, safely.

In September, Butte Electric further strengthened its ties and

communications with local first responders following an eventful summer by hosting a series of safety demonstrations for emergency crews in Meade and Butte Counties and the U.S. Forest Service.

"Earlier this year we faced several incidents that resulted in exposed power lines near first responders," said Matt Sleep, chief executive officer of Butte Electric. "In one case, we had a situation west of Spearfish where strong winds brought down a billboard, exposing lines that sparked and started a fire."

Both Butte Electric and the local fire department responded to the emergency, de-energizing the lines and containing the small grass fire. In a separate incident, a driver suffered a medical emergency and crashed into an electrical pedestal. Although the driver died in the accident, the actions of first responders and the electric cooperative prevented further injuries. The incident, among others, prompted Butte Electric to take proactive steps in preparation for the next possible emergency.

"We wanted to both educate responders and build some rapport, so when they see a power line, they know who to call and that they are comfortable getting in contact with us," said Sleep.

Butte Electric employees organized and led a hands-on safety training using the South Dakota Rural Electric Association's high voltage demonstration trailer, a specialized tool



that highlights the very real dangers of electricity. During the session, linemen demonstrated how electricity can arc, or jump, from one connection to another, always seeking the easiest path to the ground.

The training is one that linemen across the state have facilitated, which includes a memorable demonstration involving a grapefruit to show how contact with electricity impacts organic material. On the outside, the grapefruit appears undamaged after contact with an electrified line but cutting it open reveals it's been cooked from the inside.

The training left an impression with Trevor Papenfuss, an assistant fire management fire officer who has served with the U.S. Forest Service in the Spearfish area for more than 30 years. Papenfuss was just one of roughly 30 U.S. Forest Service members who attended the demonstration.

"We deal with incidents involving electricity at least once a year, if not more," Papenfuss said. "Butte

Electric provided us with a lot of valuable information and a powerful demonstration. Seeing a grapefruit burn from the inside out makes a big impact and impression of just how dangerous live electricity can be. Several of our new wildland firefighters attended and they took away information that will stay with them for a long time."

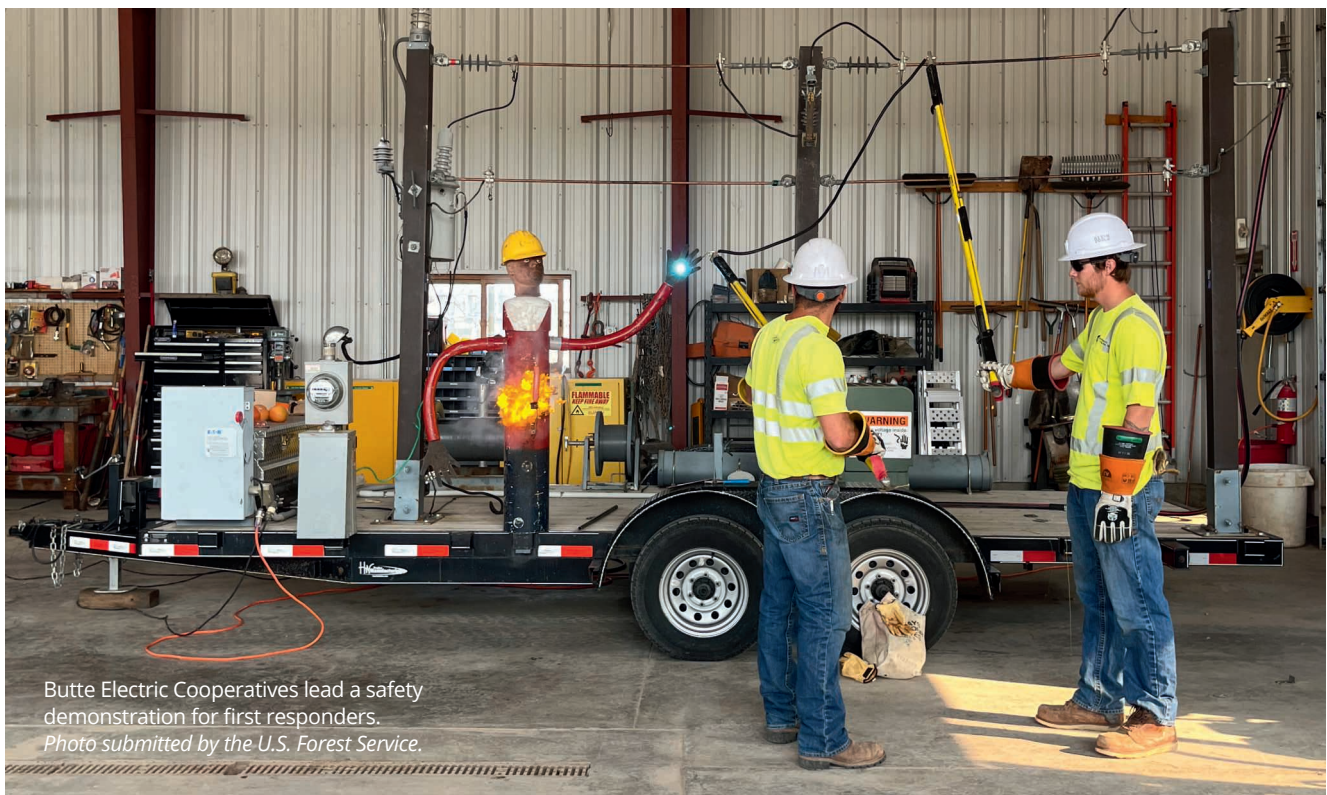
In a separate training tailored to the Sturgis Fire Department, Volunteer Fire Chief of the Sturgis Fire Department Scott Lensegrav said the training was impactful for his fellow volunteers. In addition to noting the value of the demonstration, Lensegrav highlighted the importance of maintaining a strong line of communication between electric service providers like Butte Electric and the fire department, especially during an emergency.

"In a situation involving power lines or electricity, the first thing we do is communicate with dispatch to try and figure out whose power line is involved in the emergency," said Lensegrav.

"The training was just another step in building good communication between our department and utilities. It was also great to have the refresher for our volunteers who have been with us for years and a good learning tool for the new volunteers that are coming into the service."

Looking forward, Sleep plans to continue strengthening the relationship between local first responders and Butte Electric for a safer future in their service area.

"It's all about building relationships and familiarity so that first responders know who to talk to and don't hesitate to call," said Sleep. "We deeply appreciate our first responders and want to help them however we can. These emergency personnel and volunteers are what make our communities great, and we just want to play our part in keeping them and our neighborhoods safe."



Butte Electric Cooperatives lead a safety demonstration for first responders.
Photo submitted by the U.S. Forest Service.

Scholar of the Month

Renville-Sibley Co-op Power, your Touchstone Energy Cooperative, congratulates Izabelle Roberts on being selected as the October Scholar of the Month. Alexis, currently a senior at RCW, was nominated because of her long-standing positive impact on her peers, her district, and her community. She strives to do well in all of her academic classes and is hard-working. She is more than willing to step up and help any of her classmates with whatever coursework they may be working on. She has a kind and empathetic personality that shines through in her interactions with people of all ages and walks of life. She carries herself with integrity and is not afraid to make admissions of error



or fault where merited. Renville-Sibley Co-op Power salutes Izabelle Roberts as the October Touchstone Energy Scholar of the Month! 905200

Comparative Report

	Current YTD	One Year Ago YTD	10 Years Ago YTD
Average # of Consumers	1,881	1,879	1,914
kWhs purchased	17,166,809	16,764,685	14,474,111
Cost of purchased power	\$1,138,431.57	\$1,147,146.56	\$650,358.74

FREE Want Ad Service

Members can submit ads for the following categories: Giveaway, For Sale, For Rent, and Wanted. Ads should be or are limited to no more than 15 words and must be received by the first of the month to be included in the following month's newsletter. Renville-Sibley reserves the right to edit content or exclude ads due to space restrictions. Ads will be run one time only unless resubmitted. Please complete the following information and mail it to the Renville-Sibley Cooperative Power, PO Box 68, Danube, MN 56230.

Name: _____

Address: _____

Phone number: _____

Ad to be placed (limit of 15 words per ad)

Type of ad: ☐ Giveaway ☐ For Sale ☐ For Rent ☐ Wanted

WHERE'S THE NUMBER?

Last month RSCPA member found their member number in the newsletter. Congratulations! The value of the energy credit will start over at \$15. Another number has been hidden in this newsletter. If you find your number and call the office by the 2nd of December, you will receive this credit on your electric statement. Good luck in your search!

REMINDER

Renville-Sibley encourages any member planning on making changes to their service in 2024 or 2025 to please contact the office as soon as possible. In order to complete these projects on time, material may need to be ordered well in advance as often there is extended lead time to get the appropriate material. In addition, crew time will be scheduled in the order projects and materials are received.

October Board Meeting Highlights

The October board meeting was held on Tuesday, October 22 at 8 a.m. All board members were present. Others present were CEO DeeAnne Norris, Attorney Jeff Whitmore, and Amy Ervin.

The board reviewed and approved the following items:

- Minutes of the September 24 board meeting
- Operating and disbursement reports for the month of September
- Safety Report for October
- 990 Report
- Basin Load Forecast Resolution
- Capital Credit Retirement Recommendation
- Hometown Bank Authorized Signer Change Resolution
- Minnwest Bank Authorized Signer Change Resolution
- MREA Annual Certification of Voting Delegates and Alternates for all 2025 Membership Meetings

The board reviewed:

- Total new members

- Capital Credits Transferred
- Reports from staff members as to the activities in their department. Items in the reports include:
 - o High-level Statement of Operations review – YTD through September (unaudited)
 - o Organization activities
 - o East River update
 - o Basin Electric update
 - o NRECA update
 - o MREA update
 - o Linecrew work in progress, equipment update, and outage update
 - o Accounts Receivable
 - o Cooperative Attorney Update
 - o Nominating Committee Appointments
 - o Cooperative Network Annual Membership Dues

Please contact the Renville-Sibley office if you would like more information regarding the board meeting.

Nominating Committee

Renville-Sibley is looking for members who would like to serve on the cooperative's Nominating Committees. Nominating Committees (one for each director district) will be meeting in early January and will be looking for candidates to run for the board of directors. Candidates chosen by the nominating committee will be put on the ballot. A member may also appear on the ballot by petition of 10 or more members residing in such district. The candidates for each district will be voted for by mail or at the annual meeting.

If you would like to be on one of the Nominating Committees, if you would like to be considered as a candidate or if you know of someone that you would like to be considered as a candidate, please let us know by calling the office at 800-826-2593.

Mission Statement

Renville-Sibley Cooperative Power Association will provide safe, efficient, reliable electric energy and services to enhance the quality of rural living.

Nondiscrimination Statement

In accordance with Federal civil rights law and U.S. Department of Agriculture (USDA) civil rights regulations and policies, the USDA, its Agencies, offices, and employees, and institutions participating in or administering USDA programs are prohibited from discriminating based on race, color, national origin, religion, sex, gender identity (including gender expression), sexual orientation, disability, age, marital status, family/parental status, income derived from a public assistance program, political beliefs, or reprisal or retaliation for prior civil rights activity, in any program or activity conducted or funded by USDA (not all bases apply to all programs). Remedies and complaint filing deadlines vary by program or incident. Persons with disabilities who require alternative means of communication for program information (e.g., Braille, large print, audiotape, American Sign Language, etc.) should contact the responsible Agency or USDA's TARGET Center at (202) 720-2600 (voice and TTY) or contact USDA through the Federal Relay Service at (800) 877-8339. Additionally, program information may be made available in languages other than English.

To file a program discrimination complaint, complete the USDA Program Discrimination Complaint Form, AD-3027, found online at http://www.ascr.usda.gov/complaint_filing_cust.html and at any USDA office or write a letter addressed to USDA and provide in the letter all of the information requested in the form. To request a copy of the complaint form, call (866) 632-9992. Submit your completed form or letter to USDA by: (1) mail: U.S. Department of Agriculture Office of the Assistant Secretary for Civil Rights, 1400 Independence Avenue, SW Washington, D.C. 20250-9410; (2) fax: (202) 690-7442; or (3) email: program.intake@usda.gov. This institution is an equal opportunity provider.



DEC. 7
Santa at the Zoo
 10 a.m.-2 p.m.
 Great Plains Zoo
 Sioux Falls, SD
 605-367-7003

To have your event listed on this page, send complete information, including date, event, place and contact to your local electric cooperative. Include your name, address and daytime telephone number. Information must be submitted at least eight weeks prior to your event. Please call ahead to confirm date, time and location of event.

NOV. 29
Parade of Lights
 Parade of Lights
 7 p.m.
 Chamberlain, SD

NOV. 30
A Hometown Christmas Market
 2 p.m.-6 p.m.
 Main Street
 Elk Point, SD

NOV. 30
Mid-Winter Fair
 9 a.m.-4 p.m.
 Gregory Memorial Auditorium
 Gregory, SD
 605-830-9778

NOV. 29-DEC. 29
Trees & Trains Exhibit at SD State Railroad Museum
 Hill City, SD
 605-665-3636

DEC. 1
A Christmas Carol
 2 p.m.
 Gayville Music Hall
 Gayville, SD
 605-624-2859

DEC. 5
Christmas on the Prairie
 4 p.m.
 Main Street
 Miller, SD

DEC. 5
Holiday Festival of Lights
 4 p.m.-7:30 p.m.
 Yankton, SD
 605-665-3636

DEC. 6
Kimball's Hometown Holiday
 3:30-7 p.m.
 Legion Hall
 Kimball, SD

DEC. 6
Hometown Holiday Vendor Fair
 10 a.m.-6 p.m.
 Armory
 Howard, SD

DEC. 7
Newell Festival of Trees
 9 a.m. – Doors Open
 11:30 a.m. – Community Lunch
 4 p.m. – Auction
 Newell City Hall
 Newell, SD

DEC. 6-8, 13-15
A Sherlock Carol
 Dec. 6-7, 13-14, 7:30 p.m.
 Dec. 8, 15, 2:30 p.m.
 Corson, SD
 mightycorson.com

DEC. 7
Santa Day
 2 p.m.
 Stockholm Buggy Museum
 Stockholm, SD
 605-467-3940

DEC. 7
KJAM Parade of Lights
 5:30 p.m.
 Madison, SD
 605-256-4514

DEC. 7-31
Garden Glow at McCrory Gardens
 5 p.m.-9 p.m.
 Brookings, SD
 605-688-6707

DEC. 8
Aberdeen Community Concert Association Fund Raiser
2024 Medora Magical Christmas Memories Tour
 3 p.m.
 Aberdeen Civic Theater
 Aberdeen, SD
 605-228-0946
 aberdeencommunityconcerts.com

DEC. 14
Parade of Lights
 Wessington, SD
 605-359-2049

DEC. 15
A Poker Alice Christmas
 2 p.m.
 Gayville Music Hall
 Gayville, SD

DEC. 31
American Legion Post 15 Save the Last Dance 2024
 8 p.m.-12:30 a.m.
 El Riad Shrine
 Sioux Falls, SD
 605-336-3470

Note: Please make sure to call ahead to verify the event is still being held.