



A Touchstone Energy® Cooperative



**RENVILLE-SIBLEY**  
**AUGUST 2025 VOL. 26 NO. 4**

# COOPERATIVE CONNECTIONS



## **Mitchell Tech Expansion**

**Co-ops Support  
New Training Lab**

Pages 8-9

**Weather Warnings**

Pages 12-13

*Photo submitted by  
Mitchell Technical College*



# Utility Poles Downed by Straight-Line Winds

**Nick Bruns**

Technology Manager

What began as a typical day on June 2nd quickly turned into one of the most destructive in recent memory for Renville-Sibley Co-op Power Association (RSCPA) and its members.

A fast-moving storm swept through the area, leaving behind more than 60 broken or damaged power poles, several miles of three-phase lines on the ground, and over 800 members without electricity.

The first outage reports began coming in around 5:40 p.m., and more followed rapidly. Service to the Henryville and Troy substations was disrupted primarily due to a transmission line failure. However, the extreme wind conditions, along with numerous reports of downed poles and trees tangled in lines, required crews to carefully patrol each circuit before safely re-energizing at the substations.

The most severely impacted area during the storm was located just north of the Birch Cooley Substation, where over three miles of three-phase power lines—including both poles and conductor—were destroyed. The damage in this region was extensive, presenting significant challenges for the restoration crews.

Despite the difficult conditions, RSCPA's line workers demonstrated exceptional dedication and efficiency. Working tirelessly through the night, they managed to restore power to all but 35 members by 2:00 a.m. Their quick response and commitment to service played a crucial role in minimizing downtime for affected members and ensuring community safety during the outage.



Following RSCPA's contracted engineers' recommendation and due to the extensive damage, a decision was made early Monday evening to bury the affected line. This approach aimed to restore power more quickly and reduce the likelihood of future issues. Gene Alex, Line Superintendent, began developing a plan to bury over three miles of three-phase distribution line.

Through the combined efforts and strong collaboration of Midwest Underground, Redwood Electric Cooperative, Brown County REA, and RSCPA's own dedicated operations department, the team completed the task of burying the damaged power line. Thanks to their swift and coordinated response, power was restored to nearly all affected RSCPA members in less than 24 hours, leaving only one member still awaiting service. This outstanding teamwork highlights the importance of partnerships and preparedness in responding effectively to weather-related outages.

This storm serves as an important reminder of the dangers that can come with severe weather. If you come across a downed power line or broken pole, never attempt to approach or touch it, as it may still be live and extremely dangerous. Always maintain a safe distance and report it immediately. For Safety concerns or to report downed lines, please contact RSCPA at 320-826-2593 or toll-free at 800-826-2593.



## Stray Voltage

Stray voltage can cause serious problems in certain livestock confinement systems. Dairywomen and hog producers can lose production from their livestock and experience health problems due to small electric voltages. These voltages are known by several names, including tingle voltage, neutral-to-earth voltage, neutral-to-ground voltage and nuisance voltage. They all refer to very low voltage between two animal contact points. The cause of the voltage can be varied and complex. It may be caused by poor load balance, faulty wiring or equipment, improper grounding or a host of other electrical problems.

One common problem is that the farm operations grow in size, but the electrical service isn't upgraded to grow along with it. Also, electrical systems become obsolete and deteriorate due to improper maintenance.

It must be understood, however, that many factors other than stray voltage may cause behavior, health and production problems. A careful analysis of all possible causes is necessary if proper corrective procedures are to be found.

A special section of the National Electric Code deals with the special requirements for wiring all livestock buildings. If these are strictly followed and buildings are "up to code," the potential for stray voltage problems is greatly reduced. Many older barns have been converted from one use to another and do not meet code requirements. If you are building new livestock facilities, be sure all work is done in accordance with Article 547 of the National Electric Code.

If stray voltage is suspected on your farm, contact the Renville-Sibley Cooperative Power Association. An investigation will be made to determine if a problem is present. Your electrician is also requested to be present so any problems can be noted and corrected. In dairy operations, consulting your milking equipment dealer and local veterinarian is also recommended. They can determine if equipment problems or health problems that may or may not be related to stray voltage are present.

## COOPERATIVE CONNECTIONS

### RENVILLE-SIBLEY CO-OP POWER

(USPS 019-074)

#### Board of Directors

Whitey Hinderman – Chair  
Roger Manthei – Vice Chair  
Vicky Firlie – Secretary/Treasurer  
Jeff Boersma  
Gary Eekhoff  
Alan Neyers  
Gary Peterson  
Helen Ruebel  
Wayland Zaske

#### Renville-Sibley Employees

Gene Alex – Line Superintendent  
Brian Athmann – Journeyman Lineman  
Shawn Beckler – Crew Chief  
Mike Benson – Journeyman Lineman  
Brad Braulick – Crew Chief  
Nick Bruns – Technology Manager  
Anthony Carruth – Journeyman Lineman  
Amy Ervin – Executive Admin and HR  
Brayden Fischer – Journeyman Lineman  
Carren Frank – Cooperative Support Specialist  
DeeAnne Norris – CEO  
Clint Olson – Journeyman Lineman  
Marc Snyder – Cooperative Analyst  
Jill Woods – Member Services Professional

RENVILLE-SIBLEY COOPERATIVE CONNECTIONS is published monthly by Renville-Sibley Co-op Power Association, 515 Highway 212 W, Danube, MN, 56230 for its members. Electric cooperative members devote 75 cents from their monthly electric payments for a subscription. Periodicals Postage Paid at Danube Post Office, Danube, MN 56230 and at additional mailing offices. POSTMASTER: Send address changes to: Renville-Sibley Cooperative Connections, PO Box 68, Danube, MN 56230; Telephone (320) 826-2593; Toll Free 1-800-826-2593; Fax (320) 826-2679.

**Web site:** [www.rscpa.coop](http://www.rscpa.coop)

This institution is an equal opportunity provider and employer.



# Staying Alert With Kids in Hot Cars

Source: National Safety Council

Since 1998, more than 1,010 children have died from vehicular heatstroke, an average of 37 per year. Parents and caregivers can act immediately to end these preventable deaths.

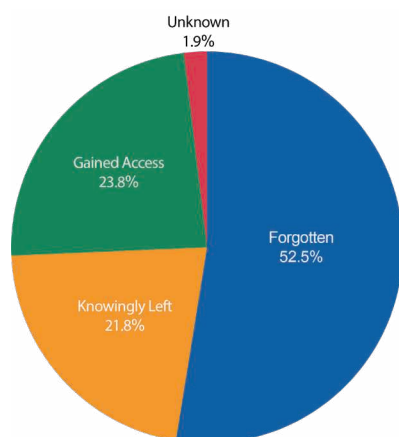
## How Does It Happen?

Even on mild or cloudy days, temperatures inside vehicles can reach life-threatening levels. Leaving windows slightly open doesn't help. Children should never be left unattended or be able to get inside a vehicle. Three primary circumstances resulting in deaths of children in hot cars are:

- A caregiver forgets a child in a vehicle - 53%
- A child gains access to a vehicle - 24%
- Someone knowingly leaves a child in a vehicle - 22%

NSC advises parents and caregivers to stick to a routine and avoid distractions to reduce the risk of forgetting a child. Place a purse, briefcase or even a left shoe in the back seat to force you to take one last look before walking away. Keep car doors locked so children cannot gain access and teach them that cars are not play areas.

There is no safe amount of time to leave a child in a vehicle, even if you are just running a quick errand.



**NSC**  
National Safety Council

**Child Passenger Safety**  
Child Passenger Safety Council  
VEHICULAR HEATSTROKE PREVENTION



**"Never fly a kite by a power line!"**

## Kasen Tikka, Age 9

Kasen warns readers about the dangers of flying a kite near power lines. Thank you for your picture, Kasen! Kasen's parents are Corey and Marcel Tikka from Lake Norden, S.D.

Kids, send your drawing with an electrical safety tip to your local electric cooperative (address found on Page 3). If your poster is published, you'll receive a prize. All entries must include your name, age, mailing address and the names of your parents. Colored drawings are encouraged.

# Delicious DESSERTS

## STRAWBERRY ANGEL FOOD DESSERT

### Ingredients:

1 angel food cake  
(baked and cut in pieces)  
3.9 oz vanilla pudding  
1 3/4 cups milk  
3 cups sliced strawberries  
1/4 cup sugar  
8 oz. Cool Whip, thawed

### Method

Put the angel food cake in a 9"x13" pan. In a separate bowl, combine vanilla pudding and milk; whisk together until thick; set aside. In another bowl, combine sliced strawberries and sugar; pour over the cake. Spread pudding over strawberries. Top with 8 oz. Cool Whip. Add more strawberries on top. Chill 1 hour before serving.

Gladys Bauer  
Cam Wal Electric

## MONSTER COOKIE BARS

### Ingredients:

1 stick butter  
1 1/2 cups peanut butter  
1 cup sugar  
1 cup brown sugar  
1 tsp. vanilla  
3 eggs  
2 tsps. baking soda  
4 1/2 cups oatmeal  
12 oz. chocolate chips  
12 oz. plain M&Ms

### Method

Mix butter, peanut butter, sugar, brown sugar, vanilla and eggs. Add dry ingredients and mix in chocolate chips and M&Ms. Bake at 350°F for 15 minutes (no longer) in a large jelly roll pan. They may not look done but they are. Enjoy!

Rhonda Tuscherer  
FEM Electric

## BLUEBERRY TORTE

### Ingredients:

1/2 cup butter  
1 cup all-purpose flour  
1 tbsp. sugar  
8 oz. pkg. cream cheese  
1 cup powdered sugar  
8 oz. Cool Whip (reserve part for topping)  
1qt. blueberries (fresh or frozen)  
1 cup water  
1 cup sugar  
3 tbsps. cornstarch

### Method

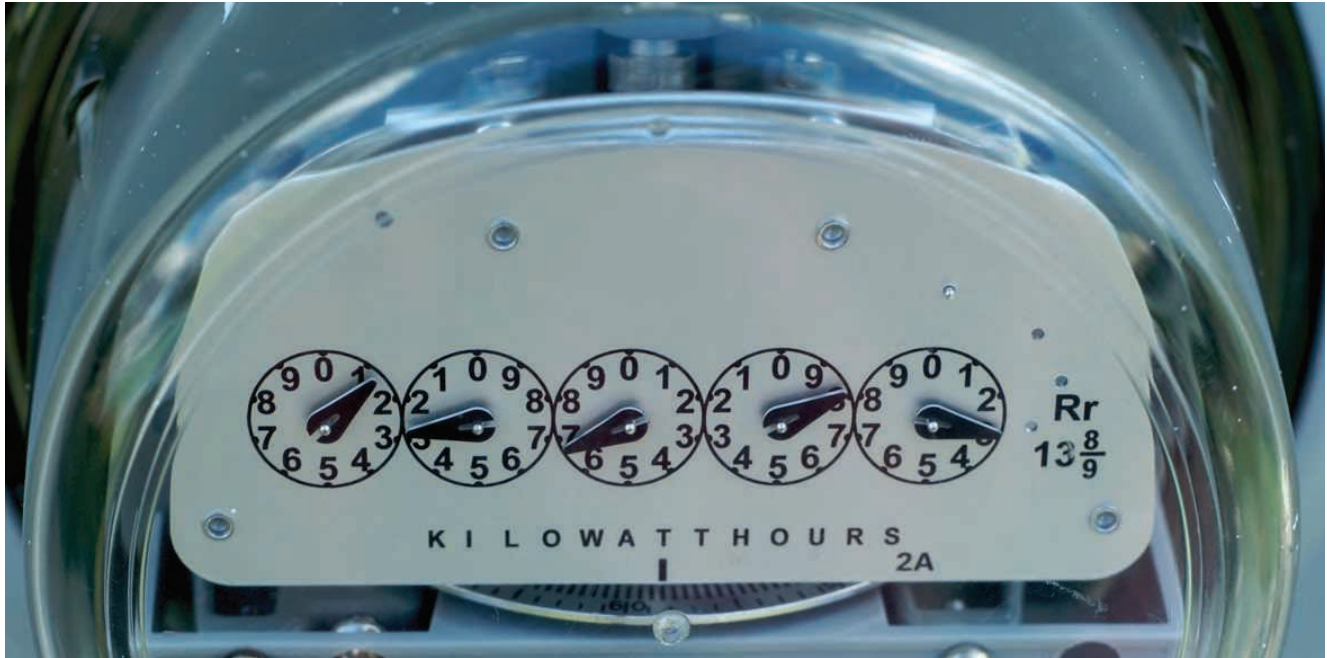
Cut butter into flour and sugar. Press into a 9"x13" pan and bake at 350°F for 20 minutes. Chill. Beat cream cheese and powdered sugar until light and fluffy. Fold in Cool Whip. Spread over crust. Simmer one cup blueberries and 2/3 cup water for five minutes. Blend sugar and cornstarch; add 1/3 cup water and mix until smooth. Combine with cooked berries and boil until thick and transparent. Cool and add remaining berries. Chill thoroughly and spoon over cream cheese mixture. Chill several hours or overnight. Top with Cool Whip.

Janet Lefers  
Douglas Electric

Please send your favorite recipes to your local electric cooperative (address found on Page 3). Each recipe printed will be entered into a drawing for a prize in December 2025. All entries must include your name, mailing address, phone number and cooperative name.



# METER TAMPERING IS NOT WORTH IT



For your safety, never try to tamper with or pull (remove) a meter.

Illegally accessing a meter can result in an arc flash bright enough to cause blindness and powerful enough to launch fragments of red-hot, shrapnel-like debris, according to the Cooperative Research Network.

Only electric utility crews can properly and safely disconnect a meter. They are trained in safe and proper disconnection techniques and wear protective clothing and gear.



## A FEW METER FACTS

- Tampering with a meter is illegal in most states.
- Meters should only be installed, maintained or removed by electric utility crews.
- Accessing the backside of a meter could generate high voltage.
- Serious injury or death from electrocution, explosion or fire is often a result of meter tampering.
- Electricity should always be connected or disconnected using a transfer switch or dedicated disconnection point.
- There is no guarantee that a structure will be deenergized by pulling a meter.

For more information about electrical safety, visit [SafeElectricity.org](https://SafeElectricity.org).

# Building a New Grain Bin on Your Farm?

To stay safe, many farming tasks require looking up and around for power lines: when operating large equipment with antennas or when using long implements, for example.

Another safety issue farmers should keep in mind related to power lines is grain bin location. The National Electrical Safety Code (NESC) addresses grain bins and their proximity to power lines with very specific requirements. The code does so to decrease the chances of farming equipment and machinery coming in contact with a live electrical line and because utility lines have clearance requirements.

If you are planning on building a new grain bin or remodeling around an area that already has one, contact Renville-Sibley Cooperative Power Association at 320-826-2593. We can help with specific code requirements. The taller a grain bin, the farther it must be placed from a power line. Not only is placing a grain bin too close to a power line extremely dangerous, it will most likely need to be relocated due to one or more code violations, and usually at the owner's expense.

Remember, calling us before installing a new grain bin or making changes around an existing one is free. Moving one is costly, it interrupts your farming schedule and is just an all-around hassle. The NESC specifies both horizontal and vertical distance



Remember grain bins have clearance requirements.

requirements so don't leave a bin's location to chance.

For example, a grain bin that is 30 feet high must be at least 93 feet from a power line, and all bins must have an 18-foot minimum vertical clearance from the highest point of the bin's filling port. There are also distance requirements for non-loading sides of bins. In addition, changes to the ground (landscaping, filling) and drainage work can affect clearance heights.

Even if you are not getting a new grain bin or making changes around an existing one, remember to always

maintain adequate clearance when using a portable auger, conveyor or elevator to fill your grain bin or when moving machinery or farming equipment anywhere on your farm.

Contact with a power line could be deadly. For more information about electrical safety, visit [safeelectricity.org](http://safeelectricity.org).

**SAFETY NOTE:** If your machinery or vehicle does come in contact with a power line, do not get out of the cab. Call 9-1-1 and the dispatched utility will de-energize the power so that you can safely exit your tractor or vehicle.

## Notice:

The July board meeting will be held on Tuesday, July 22nd, 2025 at 8 a.m.

The August board meeting will be held on Tuesday, August 26th, 2025 at 8 a.m.

The September board meeting will be held on Thursday, September 18th, 2025 at 8 a.m.





# FUNDING FUTURES

## Rural Electric Cooperatives Support New Training Facility

**Jacob Boyko**

jacob.boyko@sdrea.coop

Mitchell Technical College is well known among the region's rural electric cooperatives for its industry-leading lineworker training programs.

Now, that program is about to get even better, as MTC begins construction on a new, state-of-the-art underground cable equipment training facility.

The Power Line Underground Lab will allow students to learn how to trench, bore, and connect cables in an environment away from other labs and courses.

Additionally, being indoors and having a dirt floor, instructors have the added benefit of being able to plan courses without worry regarding outside weather and frozen ground during winter.

"The new facility allows us to be able to use our underground curriculum and teach it all throughout the school year, instead of just the beginning and the end when the ground is thawed out," MTC's president, Theresa Kriese said about the space.

"They get more equipment time because we're not trying to

A render showing Mitchell Technical College's new Power Line Underground Lab. MTC says students will practice underground utility work in this new facility, away from other courses' labs to reduce crowding. Submitted Photo



Construction of MTC's Power Line Underground Lab began this spring. MTC expects students beginning in the fall semester of 2026. Submitted Photo

share a lab where we're also planting poles."

Kriese hopes spreading out the curriculum over the semester will allow MTC's instructors to dive deeper into certain course topics with their students, making them overall better candidates for employment when they enter the workforce.

"We're seeing the energy industry making another transformation where underground is really gaining a larger presence than it had in the past", Kriese added, noting the Federal Emergency Management Agency's push to replace downed overhead lines with resilient underground cables after storms.



"We're finding that if we can have our students trained in both (overhead and underground), it opens some opportunities for them, because they may not be able to climb that pole their entire life," she continued. "It gives some flexibility to the employer, because I can hire somebody that can climb but they can also do that underground connection. So wherever I need them, I can have them work in my employment area."

Central Electric Cooperative General Manager Ken Schlimgen agrees, adding that with more and more electric co-ops working to replace their aging overhead infrastructure with underground line, MTC's new underground focus will help alleviate future workforce challenges.

"When we support Mitchell Tech programs, it's an investment into our most important asset: our workforce," Schlimgen said. "Workforce challenges will continue for decades, and having a competent, qualified team of lineworkers to serve our members and keep the lights on is vital to our success."

Central Electric is just one electric co-op providing financial support for the expansion.

At the time of writing, more than 20 electric co-ops in South Dakota have pledged over \$460,000 to MTC in support of the facility.

"Power line personnel are the backbone of our cooperative family, keeping the lights on for our members and being leaders in our communities," said Steve Barnett, general manager for the South Dakota Rural Electric Association.

"Mitchell Technical College is a workforce pipeline for this profession and is vital to cooperatives across our region."

Kriesie said staff and student excitement is growing ahead of the facility's expected 2026 completion and expressed appreciation to electric

co-ops for their support.

"Mitchell Tech is making a statement and a commitment to the energy industry that we are your partner in developing and training employees for you," Kriesie said.

"Without the partnership of the electric cooperatives, we really

wouldn't be able to make this expansion."

The project is slated to celebrate its grand opening in the Fall of 2026, when students and Mitchell Tech faculty will begin using the facility to train tomorrow's electric cooperative workforce.



MTC's current plan for the Power Line Underground Lab shows a 34,000 square foot facility, made up of a 23,500 square foot underground lab, a 7,755 square foot vehicle and equipment storage area and a 1,000 square foot classroom.

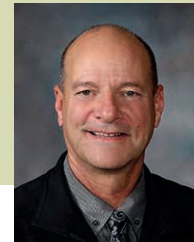
*Submitted Photo*



Theresa Kriesie  
President  
MTC



Steve Barnett  
General Manager  
SDREA



Ken Schlimgen  
General Manager  
Central Electric

## Scholar of the Year Banquet 2025



**Amy Ervin**  
Executive Admin  
and HR

Renville-Sibley Cooperative Power Association celebrated the conclusion of the tenth year of our Scholar of the Month Program on Wednesday, June 4th. Four recent high school graduates, their family members, and two of the teachers that nominated them gathered at the Danube Community Center for the Renville-Sibley Cooperative Power Touchstone Energy® Scholar of the Year Banquet.

As a Touchstone Energy Cooperative, Renville-Sibley was founded on the four pillars of Integrity, Accountability, Innovation, and Commitment to Community. Based on these principles, Renville-Sibley Co-op Power sponsors the Scholar of the Month program to recognize those high school students who also share these same values. During the school year, in the months of September through April, these students were nominated by a teacher at one of our area schools because they felt the student demonstrated outstanding academic, school, and community achievements. Through a random drawing, one name is selected each month from those names submitted. A \$100 donation was given to the school of the selected student with the student determining how the funds were to be distributed at their school (music, sports, art, etc.). The Scholar of the Month was then featured in the Cooperative Connections monthly newsletter, their local newspaper, and on the local radio stations. Schools invited to participate in the program include Renville County West, MACCRAY, BOLD, Redwood Valley, Central Minnesota Christian School, Cedar Mountain, and GFW.

Renville-Sibley hosted the Scholar of the Year Banquet to recognize each of these students. Gabriella Pederson was selected, by a random drawing, as the Scholar of the Year and the winner of a \$1,000 scholarship. Gabriella is a recent high school graduate of Central Minnesota Christian School. To be eligible for the scholarship, the student had to be present at the banquet.

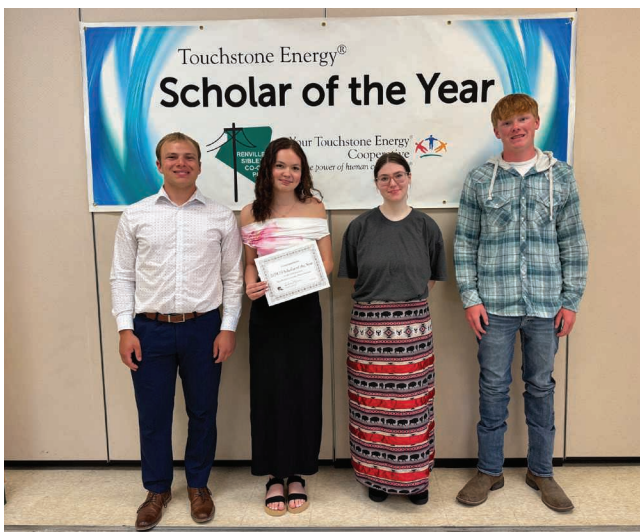
Gerald Seehusen, a Renville-Sibley member, was our guest speaker for the evening. Gerald shared many stories of his life experiences and the valuable lessons he learned along the way. Whether it was his time in the service, working away from his family, whatever the challenge was; life taught him it matters how you treat people and if you can make a difference, make a difference.

Thank you to Main Street Café in Danube for once again catering a delicious meal that was enjoyed by everyone.

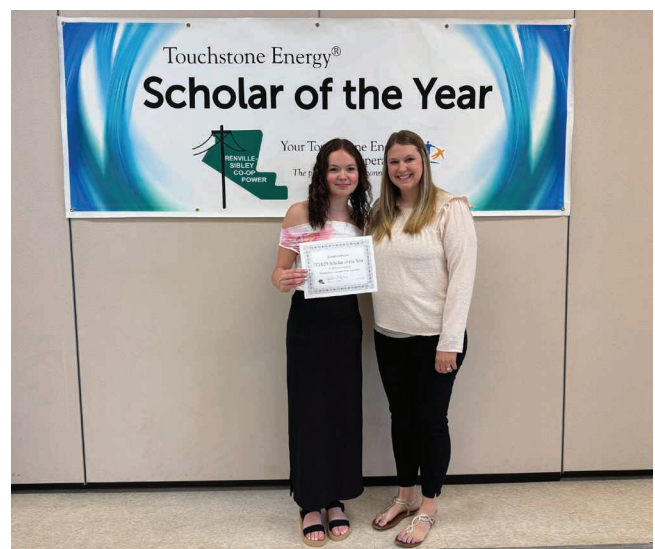
Renville-Sibley looks forward to another great year of offering the Touchstone Energy Scholar of the Month program in the 2025– 2026 school year.

The following is a list of the scholars selected each month and the school organization they chose for their \$100 donation:

Month	Scholar	School Organization
September	Alexis Prescott	School Band Department
October	Izabelle Roberts	Music Department
November	Gabriella Pederson	Industrial Tech Department
December	Caele LeGare	Boys Basketball Program
January	Lindsay Lopez	English Department
February	Isaac Asche	Art Program
March	Ryan Erickson	Industrial Tech Department
April	William Bastian	Football Program



The following scholars attended the Scholar of the Year Banquet held on June 4th. From left to right: William Bastian (GFW), Gabriella Pederson (CMCS), Alexis Prescott (Cedar Mountain), and Ryan Erickson (CMCS).



Gabriella Pederson, winner of a \$1,000 scholarship, is pictured with Renville-Sibley's Executive Admin and HR, Amy Ervin.



# Guest Speaker's Advice to Scholars

**Gerald Seehusen**

On June 4, I had the privilege of speaking to the selected Scholar of the Year recipients and their parents at the Danube Community Center at the 2025 banquet. I was impressed by the group of young men and young women. Their scholastic achievement is evidence of their hard work, persistence, and accomplishment of their goals.

When we get old, there is a tendency to think we are qualified to share what we learned over our life, this may be true and may not be true. In preparation for the speech, I asked for help from people of all ages above 17. The question was, "What do you wish you would have known when you were 17?" The response was quite impressive, way more than I could use, I will share two things I shared with the students and parents.

Number one, great things are accomplished with great sacrifice and sometimes failure and disappointment. It teaches us perseverance, and determination to keep moving ahead to achieve your goal. Do not expect praise for your accomplishment. You can achieve the great high of achievement alone in the middle of a night of hard work. Let your accomplishments speak for themselves. I had awards for selling excellence, they are packed away in a box, no one else remembers or cares and neither do I, trophies and awards are quickly forgotten, true accomplishments are not.

Number two, growing up in rural Minnesota, in a small town or on a farm is a great blessing. Be proud of it. Our need to work together, our ability to make relationships, our close exposure to multiple experiences,



Guest Speaker, Gerald Seehusen speaking at the Scholar of the Year Banquet.

being close to the action, willingness to work and learn from these experiences are a great blessing. The world knows what you have, and they want it. They will hire you if you are from Minnesota and grew up in a small town or farm.

I shared more than these two points with the students and parents. The speech generated more responses from adults and students. I was impressed. The Cooperative has a great program here, recognizing, encouraging and rewarding these students. I thank you for having a part in it.

## OUTAGE REPORT:

*Affecting 10 members or more*

**Date:** 5-20-25  
**Time off:** 12:09 AM  
**Time on:** 2:10 AM  
**Substation:** Birch Cooley  
**Cause:** Fallen Tree

**Date:** 5-31-25  
**Time off:** 11:32 PM  
**Time on:** 1:07 AM  
**Substation:** Birch Cooley  
**Cause:** Animal

Please contact Renville-Sibley's office for more details about these power outages.

## REMINDER

Renville-Sibley encourages any member planning on making changes to their service in 2025 or 2026 to please contact the office as soon as possible. In order to complete these projects on time, material may need to be ordered well in advance as often there is extended lead time to get the appropriate material. In addition, crew time will be scheduled in the order projects and materials are received.

## FOR SALE

4 x 8 Plywood Sheets: 1/4" \$20 each,  
 1/2" \$25 each, 3/4" \$30 each  
 Dennis Rehbein  
 Renville, MN 56284  
 507-430-8449

Many landscaping blocks, \$0.25 each.  
 Like new tires, \$40 each.  
 9' digger (pull type), \$80.  
 Randy Mertz  
 Olivia, MN 56277  
 320-523-0776

## WANTED

That John Deere Spitfire that has been sitting in the corner of the shed forever.

Bob Johnson  
 Sacred Heart, MN 56285  
 320-249-3179

# WEATHER WARNINGS

## Getting Ready for Severe Summer Storms

**Jacob Boyko**

[jacob.boyko@sdrea.coop](mailto:jacob.boyko@sdrea.coop)

Midwest summers have a certain notoriety for their extreme summer weather events.

South Dakota is no exception. Between May 2015 and June 2025, the National Oceanic and Atmospheric Administration (NOAA) reported more than 200 tornadic events in South Dakota.

### The Recipe for Severe Weather

According to Peter Rogers, warning coordination meteorologist for the National Weather Service (NWS) Office in Sioux Falls, there are four foundational components for the specific type of thunderstorms that produce tornadoes called supercells.

The first component is moisture – it's needed to form clouds. The second component, lift, refers to an upward motion of the air. In places without mountains like eastern South Dakota and western Minnesota, that occurs when a cold or warm front moves into the area and the laws of physics force warm air upward.

The third component, instability, is the

difference between the two air masses.

"If you have pockets of air that are hotter than the air around them, they'll continue to rise," Rogers explained. "And the instability is the extent to how far those parcels will rise."

The final component, wind shear, is how the wind speed and direction changes with altitude.

"Here, at the surface, we're normally only concerned about what the wind speed is doing at the surface," Rogers explained.

"But as meteorologists, we want to know what's happening at 5, 10, 15 ... feet and so on. The more changes you have with wind speed and direction ... with height increases your chances of going from just your garden-variety thunderstorm to a severe thunderstorm that's more capable of producing strong winds and tornadoes."

Over the last 10 years, South Dakota has seen tornadoes mostly ranking EF-0, EF-1 and EF-2 on the Enhanced Fujita scale.

The scale, named for its developer, meteorologist Ted Fujita, ranks tornadoes on a scale from 0 to 5 based on recorded wind speed and the damage observed that can be attributed to the tornado, with an

Storm clouds gather near Nunda, S.D.

Photo by Jacob Boyko

EF-5 being the most severe.

An EF-0 tornado will leave behind damage indicators showing wind speeds between 65 and 85 mph, while an EF-1 tornado will show damage indicating wind speeds between 86 and 110 mph, an EF-2 111-135 mph, an EF-3 136-165 mph, an EF-4 166-200 mph and an EF-5 being anything over 200 mph.

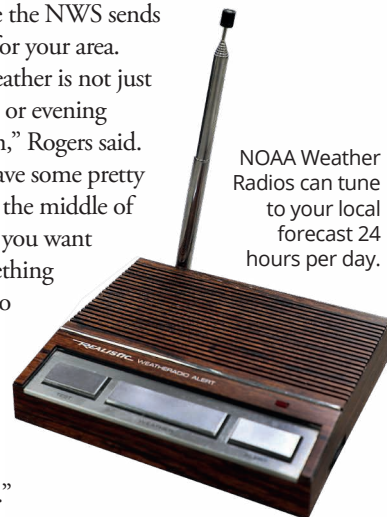
But weak and strong tornadoes alike can be deadly without proper action.

Working at the National Weather Service, it's part of Roger's job to get severe weather alerts out to the public.

Weather radios are particularly helpful in severe weather scenarios, he explained, because you can set them to alert you any time the NWS sends out an alert for your area.

"Severe weather is not just an afternoon or evening phenomenon," Rogers said. "We often have some pretty big events in the middle of the night, so you want to have something that's going to wake you up in the middle of the night so you can get to shelter."

NOAA Weather  
Radios can tune  
to your local  
forecast 24  
hours per day.





As any Midwest resident knows, there's far more summertime severe weather than just tornadoes.

Derechoes, which decimated much of eastern South Dakota and Western Minnesota in 2022, produces a wall of strong, fast gusts of wind that can be just as dangerous as a tornado.

According to the NWS, for a storm to be classified as a derecho, it must extend 250 miles with gusts of at least 58 mph and produce several gusts of at least 75 mph.

In western South Dakota, the Black Hills help create the optimal conditions needed for severe hail.

"What you need is a really strong thunderstorm that has a really strong updraft," explained Kelly Serr, warning coordination meteorologist for the National Weather Service Office in Aberdeen.

"When that updraft is really strong, it reaches the very coldest levels of the atmosphere where tiny droplets of rain start to freeze."

The stronger the draft, the longer the frozen rain drop will remain in the atmosphere. And the longer it's stuck in the updraft, the more water it collects, growing in size until finally the hail stone is too heavy to be suspended by the updraft anymore, and it plummets to the ground.

In western and central South Dakota, that process is exacerbated by the Black Hills, which help force the air up even higher and create fast-developing thunderstorms.

During severe weather events like thunderstorms, tornadoes and hail, the NWS encourages those in the pathway of the storm to seek shelter in a basement or a room without windows away from outside walls, as hail and other debris can shatter windows.

"Something we always tell people is to pay attention to the forecast," Serr said. "Know before you go: 'Are we expecting severe storms?' And then have a safety plan in place for wherever you are."

## Looking Back at Summer Storms

### Delmont Tornado – May 5, 2015

At about 10:45 a.m. on Mother's Day, an EF-2 tornado struck Delmont. The tornado's path began in Charles Mix County, making its way north into Douglas County where it reached Delmont and damaged numerous homes, including Delmont's famous Onion House, and destroyed the Zion Lutheran Church and fire station. The NWS reported a peak wind speed of 130 mph, with the tornado covering 17.3 miles and reaching a width of 400 yards.

### Derechos – May 12, July 5, 2022

In the afternoon, a wall of straight line wind known as a derecho moved northeastward through eastern S.D. and Western M.N., with wind speeds reaching over 100 mph. The storm brought with it numerous tornadoes, including an EF-2 tornado with wind speeds up to 120 mph in Castlewood. According to the NWS, the derecho was the "most extreme example on record in terms of the measured significant wind gusts." The National Centers for Environmental Information categorized the storm a billion-dollar disaster event. Less than two months after the May event, a derecho moving southeastward produced wind gusts reaching 99 mph in Howard and 96 mph in Huron. In Sioux Falls, the sky turned green – a rare phenomenon caused by refraction, or the bending of light when passing through and being warped by the water and ice contained within the storm system.

### Black Hills Hail – June, 2, 2019

In the morning, a supercell thunderstorm moved through Rapid City, Hermosa and Fairburn, producing golf ball-sized hail that damaged vehicles, homes and crops.

### Tripp Tornado – May 8, 1965

The strongest tornado ever recorded in S.D. was in Tripp County. The storm produced snow over the Black Hills, with Lead reporting 36 inches of snow. The Tornado touched down east of Wewela, with a maximum observed width of 1,760 yards, and moved northwest 30 miles. The tornado was classified an F-5.

**Source: Event Summaries, Weather.gov**

### Pierre Hail – July 18, 2023

An afternoon warm front heading east across central S.D. developed into a supercell. Around 6:20 p.m. in Pierre, there were reports of softball-sized and larger hail, with one setting a Hughes County record at 5 inches in diameter.

### Dupree Tornado – June 16, 2010

In the afternoon and evening hours, a thunderstorm over Dupree produced damaging winds, torrential rainfall and flooding, and at least 16 tornadoes, with multiple tornadoes being simultaneous. The storm damaged roofs, mobile homes and grain bins. The damage observed indicated an EF-2 tornado.

### Vivian Hail – July 23, 2010

A S.D. and U.S. hailstone record was set in Vivian after an evening thunderstorm formed a supercell moving southeastward. The NWS reported numerous hailstones exceeding 6 inch diameters as well as a record-setting 8 inch diameter, 18.625 circumference and 1 pound, 15 ounce hailstone. NWS estimates the hail stone fell at about 100 mph.

### Sioux Falls Tornado – Sept. 11, 2019

In the late evening hours of Sept. 10 into the early morning hours of Sept. 11, severe thunderstorms moved across southeast S.D. into M.N. and I.A., bringing 80 to 100 mph straight line winds and three brief EF-2 tornadoes in Sioux Falls. The Avera Health Complex, several commercial spaces, and a neighborhood were damaged.

### Jerauld Tornadoes – June 18, 2014

In the evening, a thunderstorm over Jerauld County produced an EF-4 tornado that traveled over 11 miles from Lane to Alpena. The tornado measured 880 yards at its widest. The same storm produced several more tornadoes, including an EF-2 that ravaged Wessington Springs.

### Bowdle Tornado – May 22, 2010

A supercell in north central S.D. produced multiple tornadoes, including an EF-4 and golf ball-sized hail near Bowdle. NWS reported nearly 100 downed utility poles.

# June Board Meeting Highlights

The June board meeting was held on Tuesday, June 24th, 2025 at 8 a.m. All board members were present. Others present were CEO DeeAnne Norris, Attorney Jeff Whitmore, Nick Bruns, Gene Allex, Amy Ervin, and Carren Frank.

The board reviewed and approved the following items:

- Minutes of the May 29, 2025 board meeting
- Operating and disbursement reports for the month of May
- Safety Report for June
- Capital Credits to Estates
- Federated Rural Electric Regions 5 & 6 Director Election Voting Delegates
- RESCO Director Election Voting Delegates
- Director Compensation
- Removal of Policy 425
- Distributed Generation Report Acknowledgements
- NRECA Regional Voting Delegates

The board reviewed the following items:

- Cooperative Attorney Report
  - Total new members
  - Capital Credits Transferred
  - Reports from staff members as to the activities in their department.
- Items in the reports include:
- High-level Statement of Operations review – YTD through May (unaudited)
  - Organization activities
  - East River update
  - Director meeting reports
  - Linecrew work in progress, equipment update, and outage update
  - Accounts receivable
- Farmfest
  - Family-a-Fair
  - Member Comments and Concerns

Please contact the Renville-Sibley office if you would like more information regarding the board meeting.

## WHERE'S THE NUMBER?

Last month RSCPA member did not find their member number in the newsletter. The value of the energy credit will be increased to \$75. Another number has been hidden in this newsletter. If you find your number and call the office by the 4th of August, you will receive this credit on your electric statement. Good luck in your search!

## OPERATION ROUND UP

If your non-profit organization has a project or event that would benefit the community, Operation Round Up funds may be available to help your group reach its goal.

The next application deadline is October 1, 2025.

Applications for donations can be found at [rscpa.coop/operation-round](http://rscpa.coop/operation-round). Contact the office at 320-826-2593 for more information.

## NOTICE

STAR Energy Services will be starting pole testing on Renville-Sibley's system beginning the week of August 18th. STAR Energy Services conducts our below-ground pole testing. We are in the seventh year of a 10-year pole inspection plan, with the rejection rate at five percent last year. Our goal is to test approximately 1,700 poles in 2025, primarily using a ranger or other 4-wheeled off-road vehicles. The inspector will be in Norfolk, Beaver Falls, and Henryville townships this year. Please call the office if you have any questions during this process.

## NOTICE

Call 811 or go to [www.gopherstateonecall.org](http://www.gopherstateonecall.org) and file a locate request before you dig

Toll Free: 1-800-252-1166

# FREE Want Ad Service

Members can submit ads for the following categories: Giveaway, For Sale, For Rent, and Wanted. Ads should be or are limited to no more than 15 words and must be received by the first of the month to be included in the following month's newsletter. Renville-Sibley reserves the right to edit content or exclude ads due to space restrictions. Ads will be run one time only unless resubmitted. Please complete the following information and mail it to the Renville-Sibley Cooperative Power, PO Box 68, Danube, MN 56230.

Name: \_\_\_\_\_

Address: \_\_\_\_\_

Phone number: \_\_\_\_\_

Ad to be placed (limit of 15 words per ad)

\_\_\_\_\_

\_\_\_\_\_

Type of ad: ☐ Giveaway ☐ For Sale ☐ For Rent ☐ Wanted



**MEMEBER INFO:**

Member Name: \_\_\_\_\_

Address: \_\_\_\_\_

Phone #: \_\_\_\_\_

Email: \_\_\_\_\_

**ENTER TO WIN!**

Bring this coupon to Farm fest booth #2201 for a chance to win a battery powered yard tool!

## August Member Events

Summer is well underway and before we know it, the annual Farmfest and Family-a-fair night events for Renville-Sibley will soon be here. Be sure to mark your calendar so you don't miss these two great events! 441301

### Farmfest

The annual Farmfest event will be held on August 5 – 7 at the Gilfillan Estate near Morgan, Minnesota. Once again, Renville-Sibley, along with other electric cooperatives in the region, have joined together to sponsor a booth at this event. Be sure to visit us at Booth #2201 in the large ag tent for more information. Farmfest is a great outdoor event for farmers and anyone interested in agriculture.

When you come, remember to bring the above coupon with you. This coupon will be used to register you for the prize drawing for a chance to win an EGO 10-inch pole saw, a cordless blower, a 16-inch cordless chainsaw, an ice auger, or a 15-inch cordless string trimmer. You must bring the coupon with you to be entered into the drawing. Stop by our booth to see what you might win!



### Family-a-Fair Night

Renville-Sibley's annual tradition of inviting our members to attend our Family-a-Fair Night compliments of the Cooperative continues! We are excited to once again offer this wonderful opportunity to bring families and neighbors together to enjoy an evening at the county fair and the activities and great food it brings.

Cooperative members (up to four family members) are invited to attend the Renville County Fair for **FREE** on **THURSDAY, AUGUST 7th**. Members will receive a postcard in the mail the week of July 21st. This postcard entitles up to four family members **FREE** entrance into the fair. Postcards should be brought to the West entrance gate of the Renville County Fair from 3 – 7 p.m. Renville-Sibley employees and board members will be located just outside the West fence to assist you. The postcard will be used to enter members into a drawing for a \$50 energy gift certificate. Children 12 and under will have the opportunity to submit their names for a prize drawing as well. We can't wait to see you at the fair!

**If you have any questions about these two great events, please be sure to give us a call at 320-826-2593 or 800-826-2593.**

## Mission Statement

Renville-Sibley Cooperative Power Association will provide safe, efficient, reliable electric energy and services to enhance the quality of rural living.

## Nondiscrimination Statement

In accordance with Federal civil rights law and U.S. Department of Agriculture (USDA) civil rights regulations and policies, the USDA, its Agencies, offices, and employees, and institutions participating in or administering USDA programs are prohibited from discriminating based on race, color, national origin, religion, sex, gender identity (including gender expression), sexual orientation, disability, age, marital status, family/parental status, income derived from a public assistance program, political beliefs, or reprisal or retaliation for prior civil rights activity, in any program or activity conducted or funded by USDA (not all bases apply to all programs). Remedies and complaint filing deadlines vary by program or incident. Persons with disabilities who require alternative means of communication for program information (e.g., Braille, large print, audiotape, American Sign Language, etc.) should contact the responsible Agency or USDA's TARGET Center at (202) 720-2600 (voice and TTY) or contact USDA through the Federal Relay Service at (800) 877-8339. Additionally, program information may be made available in languages other than English.

To file a program discrimination complaint, complete the USDA Program Discrimination Complaint Form, AD-3027, found online at [http://www.ascr.usda.gov/complaint\\_filing\\_cust.html](http://www.ascr.usda.gov/complaint_filing_cust.html) and at any USDA office or write a letter addressed to USDA and provide in the letter all of the information requested in the form. To request a copy of the complaint form, call (866) 632-9992. Submit your completed form or letter to USDA by: (1) mail: U.S. Department of Agriculture Office of the Assistant Secretary for Civil Rights, 1400 Independence Avenue, SW Washington, D.C. 20250-9410; (2) fax: (202) 690-7442; or (3) email: [program.intake@usda.gov](mailto:program.intake@usda.gov). This institution is an equal opportunity provider.

## REGISTER TO WIN!

Bring this coupon and mailing label to the Touchstone Energy® Cooperatives booth at Dakotafest or the South Dakota State Fair to win a prize!

Your Phone Number: \_\_\_\_\_

Your E-mail Address: \_\_\_\_\_



Photo courtesy of Travel South Dakota

**AUG. 27-SEPT. 1**  
**South Dakota State Fair**  
Huron, SD

**AUG. 2-3**  
**50th Anniversary Pioneer Threshing Show**  
MN Machinery Museum.  
Hanley Falls, MN  
507-828-5437

**AUG. 5-7**  
**Farmfest 2025**  
8 a.m.-4 p.m.  
Gifillan Estate  
28269 MN 67  
Morgan, MN  
[www.ideagroup.com/farmfest](http://www.ideagroup.com/farmfest)

**AUG. 6-8**  
**Renville County Fair**  
Renville County Fairgrounds  
Bird Island, MN

**AUG. 9**  
**Day of Honor**  
End of WWII 80th Anniversary  
10 a.m.  
Battleship South Dakota Memorial  
Sioux Falls, SD

**AUG. 10**  
**Czech Heritage Festival**  
Bechn, MN  
302-522-1218

**AUG. 13-17**  
**Lyon County Fair**  
2-7:30 p.m.  
Marshall, MN  
507-530-0566  
[www.lyoncountyfair.com](http://www.lyoncountyfair.com)

**AUG. 16**  
**Extreme Bull Riding Tour**  
7:30 a.m.  
Yankton, SD  
605-760-2153

**AUG. 21-24**  
**Steam Threshing Jamboree**  
Prairie Village  
Madison, SD

### **SATURDAYS UNTIL SEPT. 13**

**Buggy Museum**  
Free Buggy Rides + More  
Saturdays 10 a.m.-4 p.m.  
Stockholm, SD  
605-938-4192

**JULY 26**  
**Planes, Trains, & Automobiles**  
Car Show, Train Rides, Flyovers  
10 a.m.-5 p.m.  
Prairie Village  
Madison, SD

**JULY 26**  
**James H. Page Memorial 5K Run/Walk**  
7 a.m.  
Sunrise Park  
Olivia, MN  
[runsingup.com](http://runsingup.com)

**JULY 26**  
**South Dakota Chislic Festival**  
10 a.m.-9 p.m.  
Freeman, SD  
[www.sdchislicfestival.com](http://www.sdchislicfestival.com)

**JULY 26**  
**Richmond Lake Association's Annual Pontoon Poker Run**  
Aberdeen, SD  
605-225-0609

**JULY 26**  
**Fort Sisseton Lantern Tour**  
11907 434th Ave.  
Lake City, SD  
605-225-0609

**AUG. 1-3**  
**Beaver Days**  
Beaver Creek, MN

**AUG. 1**  
**Renville Cty Walk In the Park**  
Cancer Survivors Celebration  
5 p.m.  
Nester Park  
Olivia, MN

**AUG. 1-10**  
**85th Sturgis Motorcycle Rally**  
Sturgis, SD

To have your event listed on this page, send complete information, including date, event, place and contact to your local electric cooperative. Include your name, address and daytime telephone number. Information must be submitted at least eight weeks prior to your event. Please call ahead to confirm date, time and location of event.

**Note: We publish contact information as provided. If no phone number is given, none will be listed. Please call ahead to verify the event is still being held.**